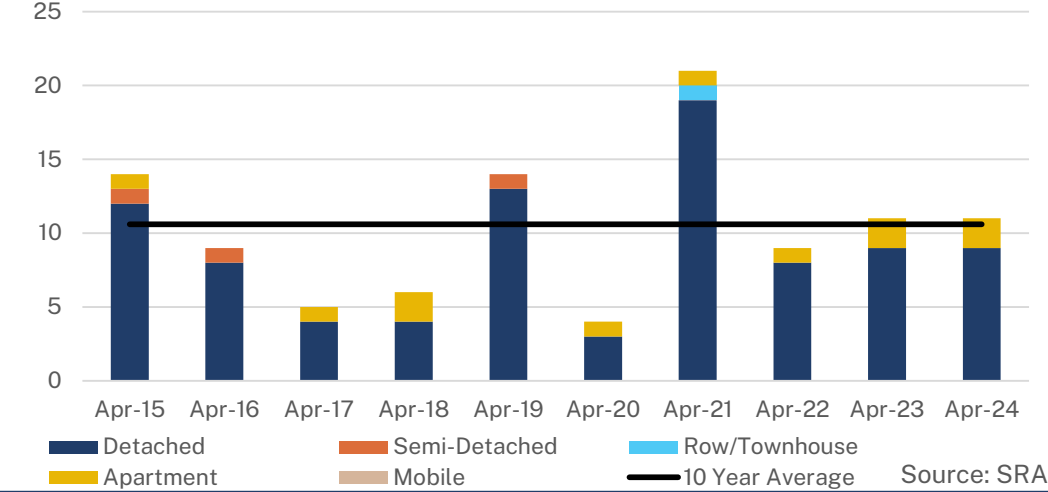


Monthly Sales Comparison



SALES

11

0.0% Y/Y | ↑ 18.8% YTD

VS. 10-YEAR AVERAGE

↑ 3.8% | ↑ 31.5% YTD

NEW LISTINGS

11

↓ 35.3% Y/Y | ↓ 16.4% YTD

VS. 10-YEAR AVERAGE

↓ 47.6% | ↓ 32.1% YTD

TOTAL RESIDENTIAL BENCHMARK PRICE

\$ 260,900 | **↑ 2.5%** Y/Y

Monthly trend*

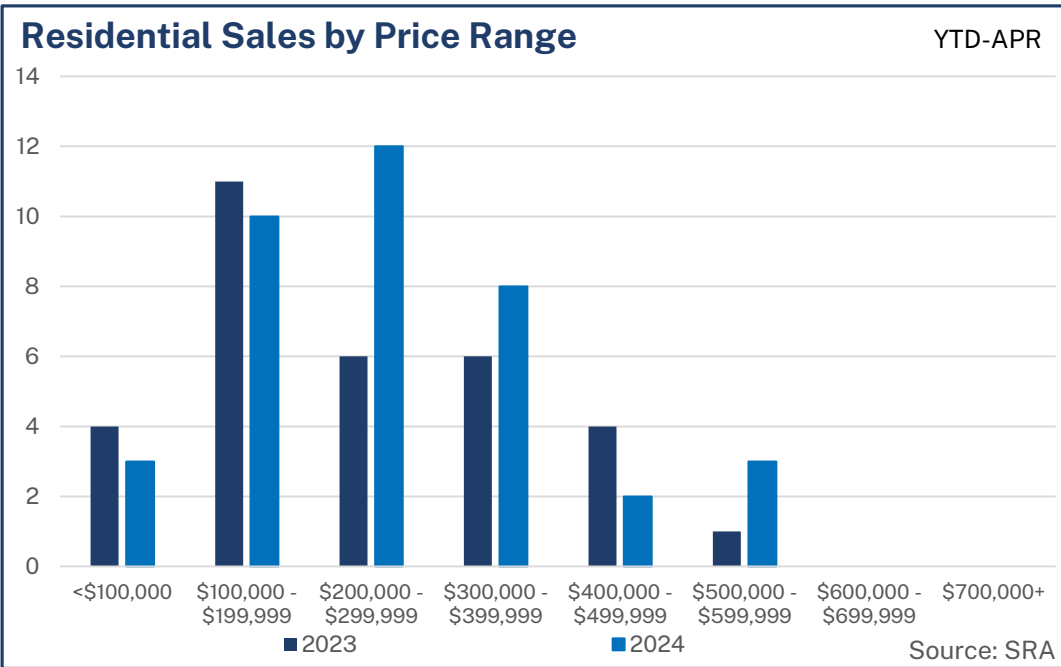
INVENTORY

30

↓ 43.4% Y/Y | Monthly trend*

VS. 10-YEAR AVERAGE

↓ 62.6% | ↓ 54.3% YTD



MONTHS OF SUPPLY

2.73

↓ 43.4% Y/Y | Monthly trend*

VS. 10-YEAR AVERAGE

↓ 72.4% | ↓ 72.0% YTD



HUMBOLDT - APRIL 2024

April 2024

	Sales		New Listings		Inventory		Months of Supply		DOM	Benchmark		Avg Price	
	Actual	Y/Y%	Actual	Y/Y%	Actual	Y/Y%	Actual	Y/Y%	Actual	Actual	Y/Y%	Actual	Y/Y%
Detached	9	0%	10	0%	24	-23%	2.67	-23%	65	\$265,800	2%	\$221,478	-6%
Semi-Detached	0	-	0	-	3	-	-	-	-	-	-	-	-
Row/Townhouse	0	-	1	-	1	-67%	-	-	-	-	-	-	-
Apartment	2	0%	0	-100%	1	-93%	0.50	-93%	28	\$240,700	13%	\$228,000	13%
Acreage	0	-	0	-	0	-	-	-	-	-	-	-	-
Mobile	0	-	0	-100%	1	-50%	-	-	-	-	-	-	-
Mutli-Family	0	-	0	-100%	0	-100%	-	-	-	-	-	-	-
Total Residential	11	0%	11	-35%	30	-43%	2.73	-43%	58	\$260,900	2%	\$222,664	-3%

10-Year Averages

	Sales		New Listings		Inventory		Months of Supply		DOM	Benchmark		Avg Price	
	Avg	%Diff	Avg	%Diff	Avg	%Diff	Avg	%Diff	Avg	Avg	%Diff	Avg	%Diff
Total Residential	11	4%	21	-48%	80	-63%	9.89	-72%	99	\$225,160	16%	\$242,123	-8%

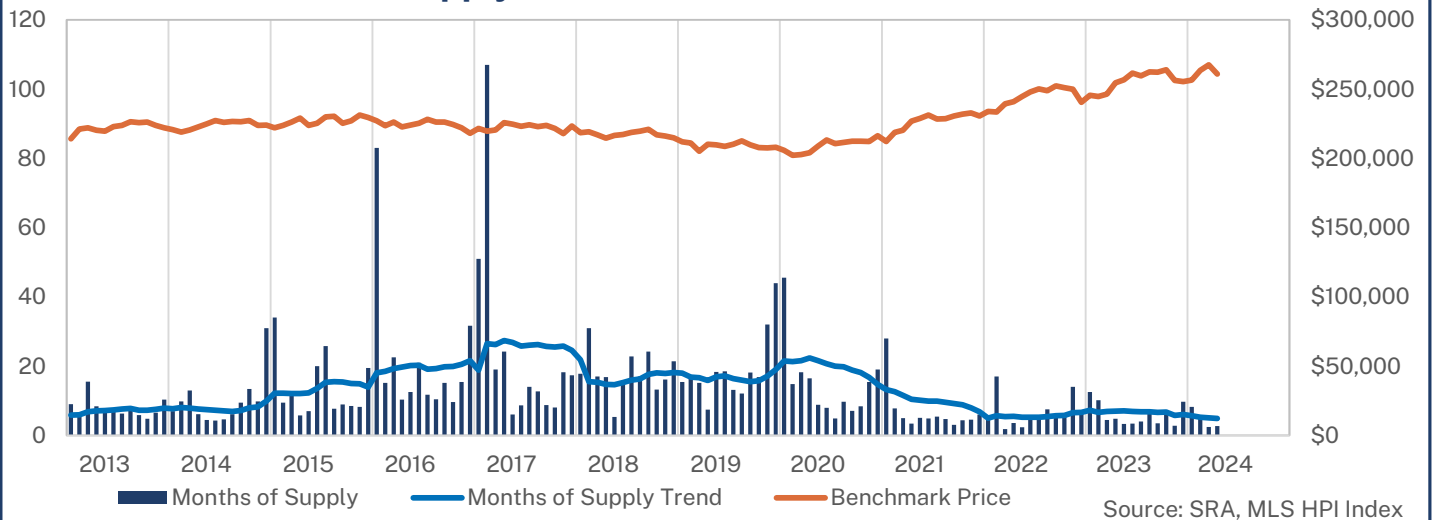
Year-to-Date April 2024

	Sales		New Listings		Inventory		Months of Supply		DOM	Benchmark		Avg Price	
	Actual	Y/Y%	Actual	Y/Y%	Actual	Y/Y%	Actual	Y/Y%	Actual	Actual	Y/Y%	Actual	Y/Y%
Detached	33	18%	35	-13%	31	-3%	3.73	-18%	78	\$269,600	7%	\$273,894	9%
Semi-Detached	0	-	3	-	2	-	-	-	-	-	-	-	-
Row/Townhouse	0	-	1	-50%	1	-80%	-	-	-	-	-	-	-
Apartment	4	0%	5	-50%	2	-86%	2.00	-86%	21	\$230,850	7%	\$217,500	19%
Acreage	0	-	0	-	0	-	-	-	-	-	-	-	-
Mobile	0	-	1	-50%	1	0%	-	-	-	-	-	-	-
Mutli-Family	1	-	1	0%	0	-100%	0.00	-	18	-	-	\$145,000	-
Total Residential	38	19%	46	-16%	36	-31%	3.79	-42%	71	\$262,100	6%	\$264,566	9%

10-Year Averages

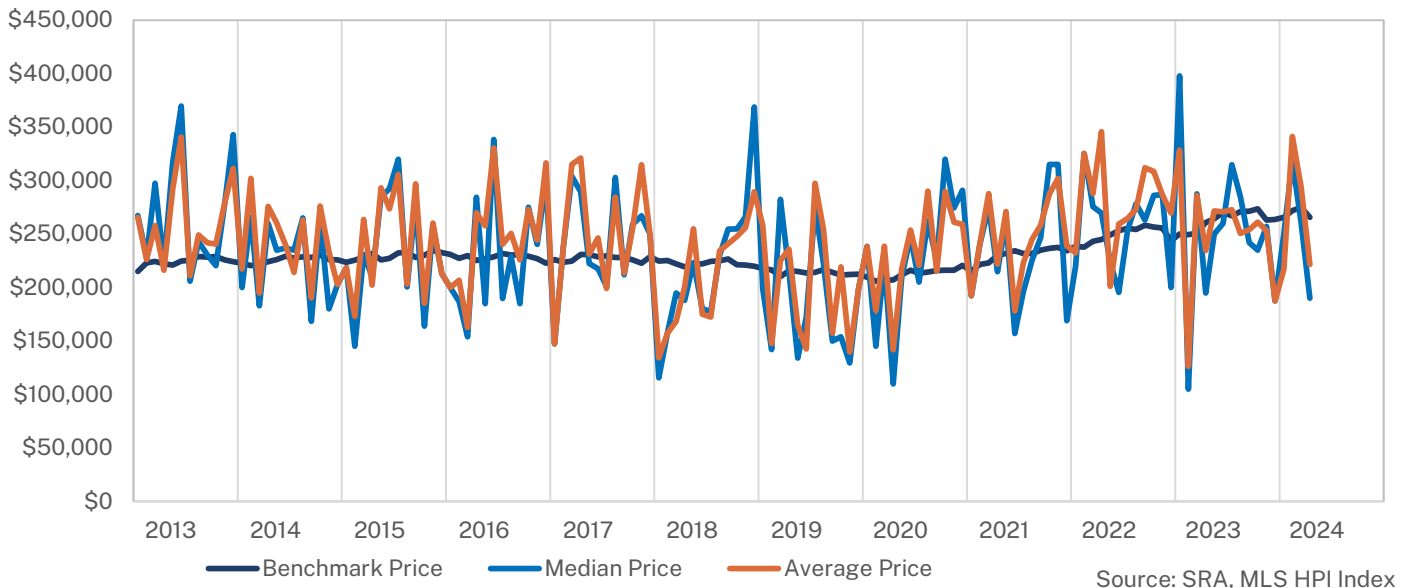
	Sales		New Listings		Inventory		Months of Supply		DOM	Benchmark		Avg Price	
	Avg	%Diff	Avg	%Diff	Avg	%Diff	Avg	%Diff	Avg	Avg	%Diff	Avg	%Diff
Total Residential	29	31%	68	-32%	79	-54%	13.51	-72%	112	\$222,770	18%	\$227,652	16%

Residential Months of Supply and Price

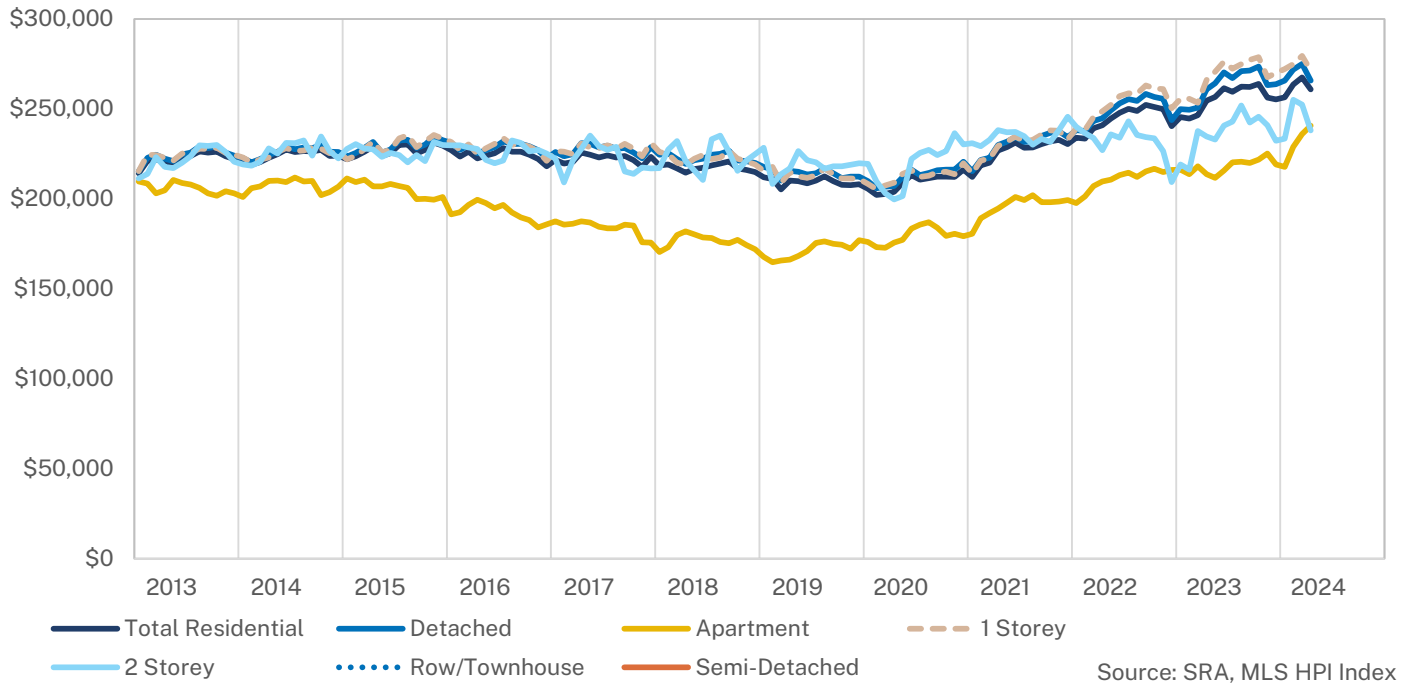




Detached Pricing



Benchmark Price





HPI Benchmark Attributes

	Composite
Bedrooms, Above Ground	2
Bathrooms, Full	2
Bathrooms, Half	0
Garage	Attached, Single width
Gross Living Area, Above Ground (Sq. Ft.)	1185
Lot Size	-
Fireplaces, Number of	0
Year Built	1983
April 2024 Benchmark Price	\$260,900
Detached Share of Sales, Last 3 Years	78%
Semi-Detached Share of Sales, Last 3 Years	-
Apartment Share of Sales, Last 3 Years	20%
Townhouse Share of Sales, Last 3 Years	-

	Detached	1 Storey	2 Storey
Bedrooms, Above Ground	3	3	3
Bathrooms, Full	2	2	2
Bathrooms, Half	0	0	0
Garage	Attached, Double width	Attached, Double width	Attached, Single width
Gross Living Area, Above Ground (Sq. Ft.)	1218	1195	1425
Lot Size	6900	6900	6600
Fireplaces, Number of	0	0	0
Year Built	1977	1977	1969
April 2024 Benchmark Price	\$265,800	\$271,400	\$238,000
Share of Total Sales, Last 3 Years	78%	67%	13%

	Semi-Detached	Row/Townhouse	Apartment
Bedrooms, Above Ground	-	-	2
Bathrooms, Full	-	-	1
Bathrooms, Half	-	-	0
Garage	-	-	Attached, Single width
Gross Living Area, Above Ground (Sq. Ft.)	-	-	953
Fireplaces, Number of	-	-	0
Year Built	-	-	2009
April 2024 Benchmark Price	-	-	\$240,700
Share of Total Sales, Last 3 Years	-	-	20%

