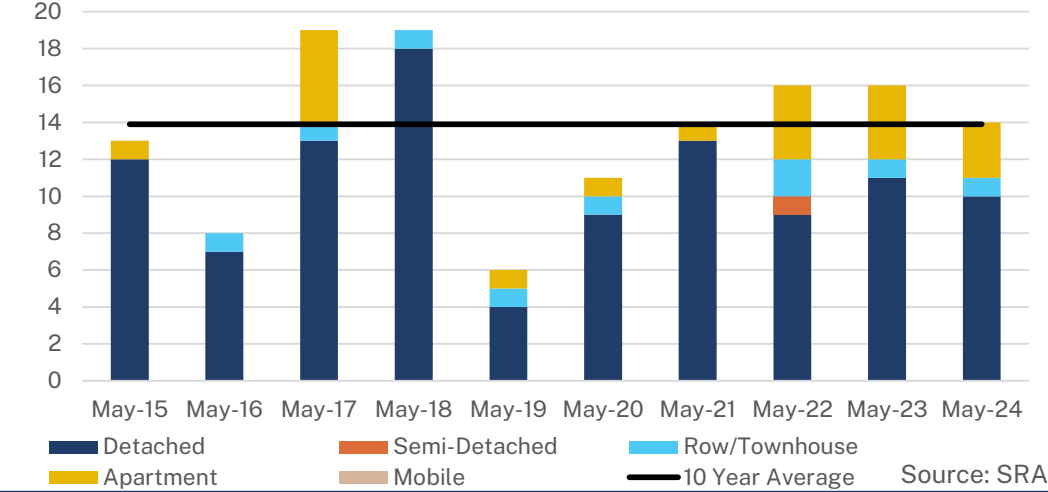


## Monthly Sales Comparison



**SALES**

**14**

↓ 17.6% Y/Y | ↑ 6.1% YTD

VS. 10-YEAR AVERAGE

↑ 0.7% | ↑ 21.5% YTD

**NEW LISTINGS**

**13**

↓ 50.0% Y/Y | ↓ 27.2% YTD

VS. 10-YEAR AVERAGE

↓ 52.6% | ↓ 38.0% YTD

## TOTAL RESIDENTIAL BENCHMARK PRICE

**\$ 266,100** | **↑ 4.2%** Y/Y

Monthly trend\*

**INVENTORY**

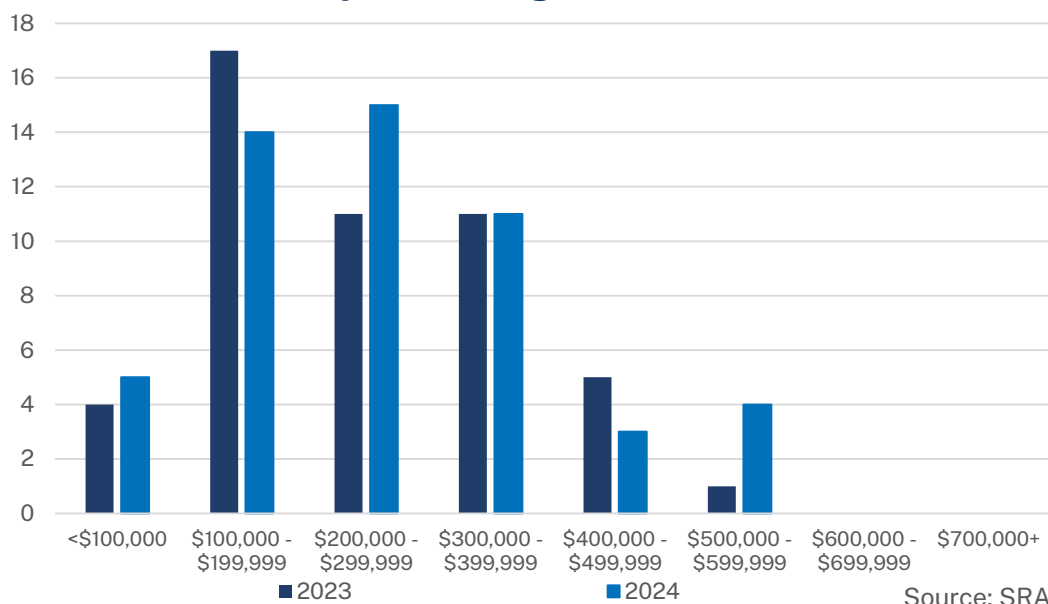
**28**

↓ 50.0% Y/Y | Monthly trend\*

VS. 10-YEAR AVERAGE

↓ 67.1% | ↓ 56.2% YTD

## Residential Sales by Price Range



**MONTHS OF SUPPLY**

**2.00**

↓ 39.3% Y/Y | Monthly trend\*

VS. 10-YEAR AVERAGE

↓ 72.7% | ↓ 67.9% YTD



# HUMBOLDT - MAY 2024

## May 2024

	Sales		New Listings		Inventory		Months of Supply		DOM	Benchmark		Avg Price	
	Actual	Y/Y%	Actual	Y/Y%	Actual	Y/Y%	Actual	Y/Y%	Actual	Actual	Y/Y%	Actual	Y/Y%
Detached	10	-9%	11	-45%	24	-33%	2.40	-27%	24	\$271,000	3%	\$287,590	6%
Semi-Detached	0	-	0	-	3	-	-	-	-	-	-	-	-
Row/Townhouse	1	0%	0	-100%	0	-100%	0.00	-100%	27	\$319,900	8%	\$265,000	39%
Apartment	3	-25%	2	-33%	0	-100%	0.00	-100%	39	\$229,200	13%	\$124,833	-18%
Acreage	0	-	0	-	0	-	-	-	-	-	-	-	-
Mobile	0	-	0	-	1	-50%	-	-	-	-	-	-	-
Mutli-Family	0	-100%	0	-100%	0	-100%	-	-	-	-	-	-	-
<b>Total Residential</b>	<b>14</b>	<b>-18%</b>	<b>13</b>	<b>-50%</b>	<b>28</b>	<b>-50%</b>	<b>2.00</b>	<b>-39%</b>	<b>27</b>	<b>\$266,100</b>	<b>4%</b>	<b>\$251,100</b>	<b>3%</b>

## 10-Year Averages

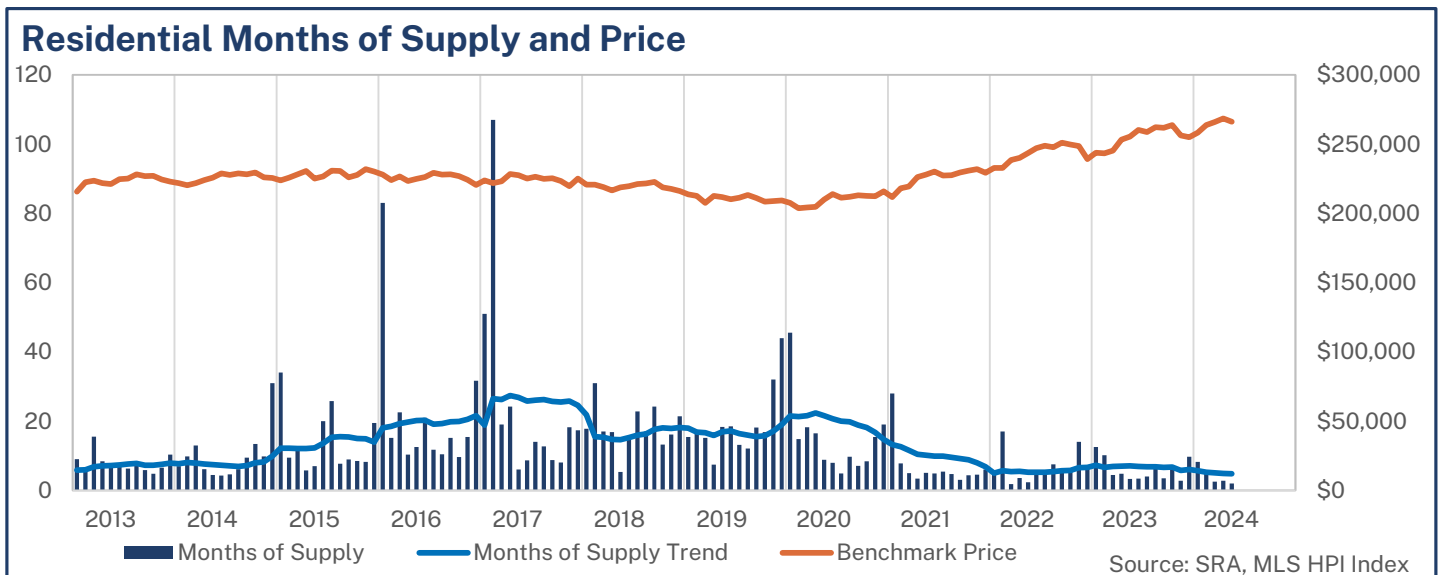
	Sales		New Listings		Inventory		Months of Supply		DOM	Benchmark		Avg Price	
	Avg	%Diff	Avg	%Diff	Avg	%Diff	Avg	%Diff	Avg	Avg	%Diff	Avg	%Diff
Total Residential	14	1%	27	-53%	85	-67%	7.32	-73%	96	\$227,060	17%	\$237,910	6%

## Year-to-Date May 2024

	Sales		New Listings		Inventory		Months of Supply		DOM	Benchmark		Avg Price	
	Actual	Y/Y%	Actual	Y/Y%	Actual	Y/Y%	Actual	Y/Y%	Actual	Actual	Y/Y%	Actual	Y/Y%
Detached	43	10%	46	-23%	30	-8%	3.49	-17%	66	\$269,940	7%	\$277,079	8%
Semi-Detached	0	-	3	-	2	-	-	-	-	-	-	-	-
Row/Townhouse	1	0%	1	-67%	0	-85%	2.00	-85%	27	\$314,280	10%	\$265,000	39%
Apartment	7	-13%	7	-46%	2	-89%	1.14	-87%	29	\$224,720	9%	\$177,786	6%
Acreage	0	-	0	-	0	-	-	-	-	-	-	-	-
Mobile	0	-	1	-50%	1	-20%	-	-	-	-	-	-	-
Mutli-Family	1	0%	1	-67%	0	-100%	0.00	-100%	18	-	-	\$145,000	-61%
<b>Total Residential</b>	<b>52</b>	<b>6%</b>	<b>59</b>	<b>-27%</b>	<b>35</b>	<b>-34%</b>	<b>3.37</b>	<b>-38%</b>	<b>59</b>	<b>\$264,540</b>	<b>7%</b>	<b>\$260,940</b>	<b>7%</b>

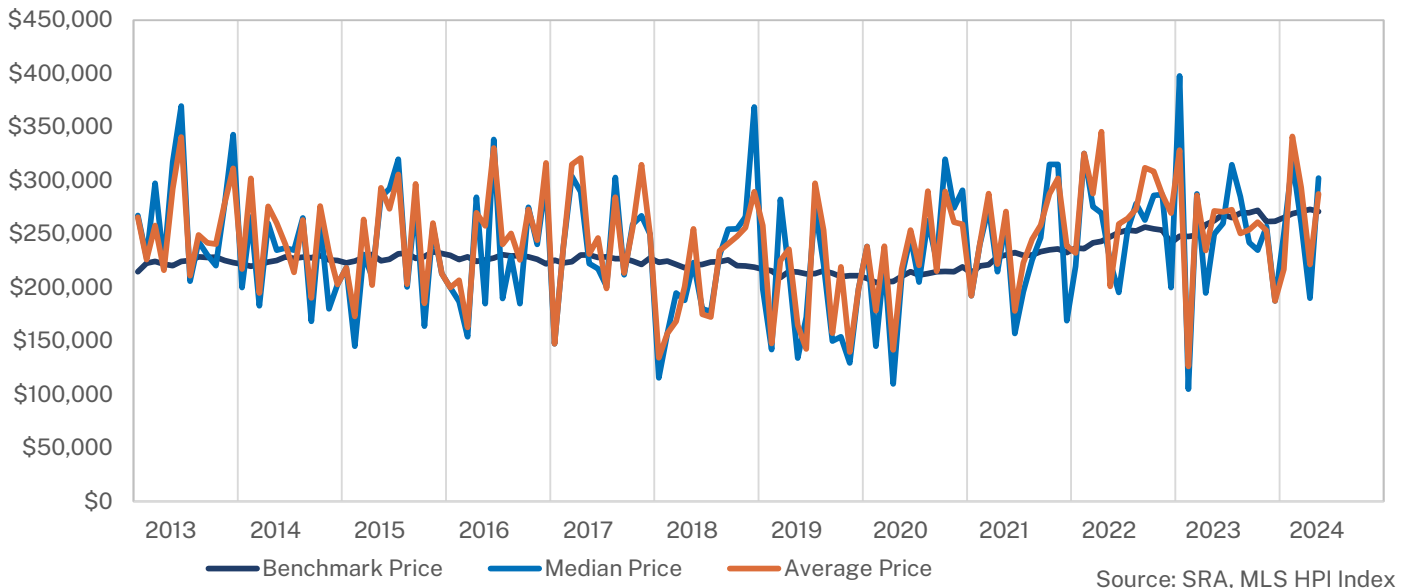
## 10-Year Averages

	Sales		New Listings		Inventory		Months of Supply		DOM	Benchmark		Avg Price	
	Avg	%Diff	Avg	%Diff	Avg	%Diff	Avg	%Diff	Avg	Avg	%Diff	Avg	%Diff
Total Residential	43	21%	95	-38%	80	-56%	10.47	-68%	106	\$224,290	18%	\$231,497	13%

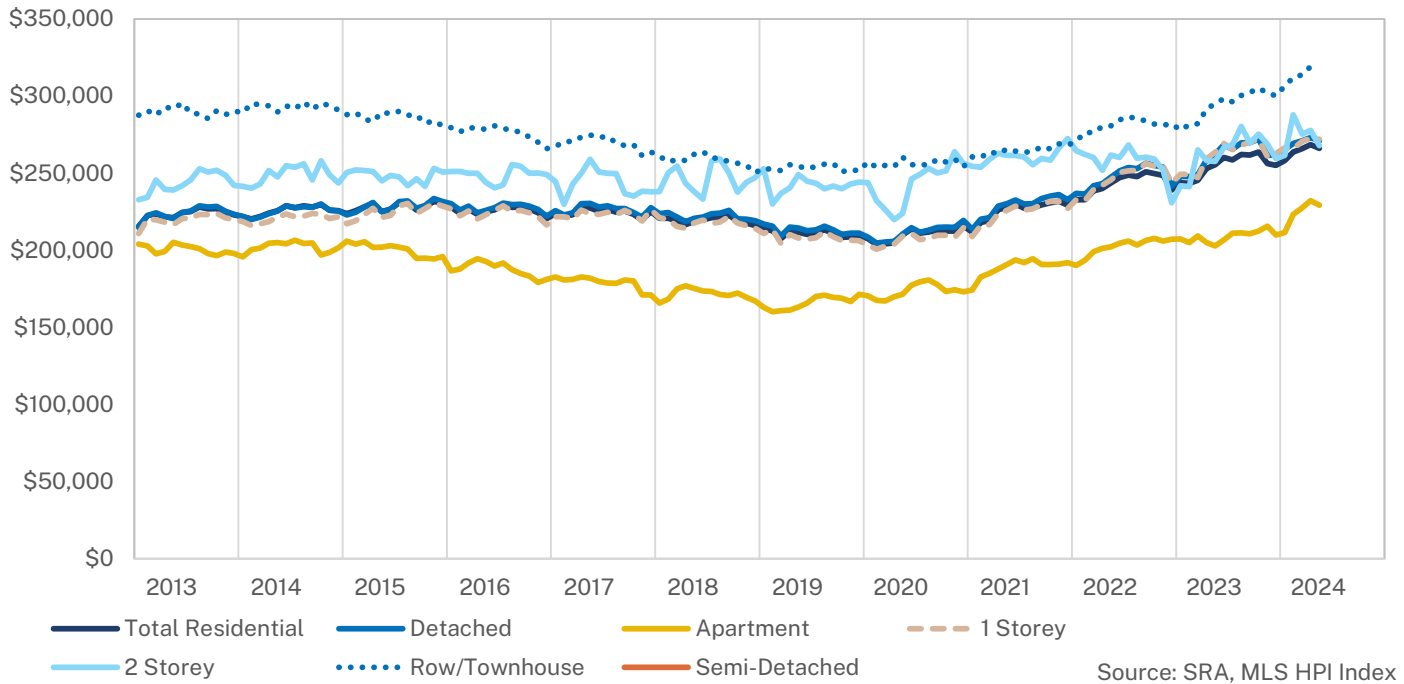




## Detached Pricing



## Benchmark Price





### HPI Benchmark Attributes

Composite	
Bedrooms, Above Ground	2
Bathrooms, Full	2
Bathrooms, Half	0
Garage	Attached, Single width
Gross Living Area, Above Ground (Sq. Ft.)	1163
Lot Size	-
Fireplaces, Number of	0
Year Built	1983
May 2024 Benchmark Price	\$266,100
Detached Share of Sales, Last 3 Years	73%
Semi-Detached Share of Sales, Last 3 Years	2%
Apartment Share of Sales, Last 3 Years	19%
Townhouse Share of Sales, Last 3 Years	6%

	Detached	1 Storey	2 Storey
Bedrooms, Above Ground	3	3	3
Bathrooms, Full	2	2	2
Bathrooms, Half	0	0	0
Garage	Attached, Double width	Attached, Double width	Attached, Double width
Gross Living Area, Above Ground (Sq. Ft.)	1211	1184	1585
Lot Size	6894	6900	6600
Fireplaces, Number of	0	0	0
Year Built	1977	1977	1974
May 2024 Benchmark Price	\$271,000	\$272,000	\$267,900
Share of Total Sales, Last 3 Years	73%	62%	13%

	Semi-Detached	Row/Townhouse	Apartment
Bedrooms, Above Ground	-	2	2
Bathrooms, Full	-	2	1
Bathrooms, Half	-	0	0
Garage	-	Attached, Single width	Attached, Single width
Gross Living Area, Above Ground (Sq. Ft.)	-	1064	914
Fireplaces, Number of	-	0	0
Year Built	-	2001	2009
May 2024 Benchmark Price	-	\$319,900	\$229,200
Share of Total Sales, Last 3 Years	2%	6%	19%

HUMBOLDT																	
	Sales	Y/Y%	New Listings	Y/Y%	S/NL Ratio	Inventory	Y/Y%	Months of Supply	DOM	SP/LP	Benchmark Price	Y/Y%	Median Price	Y/Y%	Average Price	Y/Y%	Index
Jan-13	6	100%	23	5%	0.26	54	0%	9.00	95	96.9%	215,600	1.5%	255,000	157.6%	252,583	155.1%	201.5
Feb-13	10	-17%	17	21%	0.59	57	4%	5.70	79	94.1%	222,500	7.2%	203,450	-6.9%	207,356	-12.5%	207.9
Mar-13	4	-69%	14	-7%	0.29	62	13%	15.50	60	94.6%	223,600	7.8%	297,500	12.3%	258,000	-3.8%	209.0
Apr-13	9	0%	26	73%	0.35	76	43%	8.44	84	91.0%	221,800	6.6%	210,000	16.7%	188,889	-0.3%	207.3
May-13	12	33%	22	69%	0.55	80	57%	6.67	92	96.8%	221,100	3.0%	285,000	67.6%	272,313	38.0%	206.6
Jun-13	12	9%	21	17%	0.57	85	55%	7.08	119	97.3%	224,600	4.2%	369,750	62.2%	340,833	54.2%	209.9
Jul-13	13	-24%	16	-11%	0.81	82	58%	6.31	61	95.9%	225,100	2.9%	206,000	-20.2%	203,577	-17.7%	210.4
Aug-13	10	11%	19	27%	0.53	83	60%	8.30	54	94.0%	228,100	4.8%	243,000	-5.1%	249,100	-0.6%	213.2
Sep-13	15	200%	29	53%	0.52	88	42%	5.87	61	96.6%	226,800	5.4%	216,000	30.9%	226,027	54.6%	212.0
Oct-13	16	33%	16	-11%	1.00	77	35%	4.81	70	94.8%	227,100	4.7%	220,500	15.3%	233,311	23.0%	212.2
Nov-13	10	-33%	7	17%	1.43	66	47%	6.60	126	97.0%	224,500	3.6%	278,500	7.1%	279,100	7.3%	209.8
Dec-13	6	0%	7	17%	0.86	62	59%	10.33	84	98.2%	222,900	2.9%	343,000	76.8%	311,483	49.1%	208.3
<b>2013</b>	<b>123</b>	<b>2%</b>	<b>217</b>	<b>21%</b>	<b>0.57</b>	<b>73</b>	<b>38%</b>	<b>7.09</b>	<b>82</b>	<b>95.8%</b>	<b>223,642</b>	<b>4.5%</b>	<b>230,000</b>	<b>5.0%</b>	<b>248,777</b>	<b>10.8%</b>	<b>209.0</b>
Jan-14	6	0%	11	-52%	0.55	42	-22%	7.00	112	94.8%	221,800	2.9%	200,000	-21.6%	217,300	-14.0%	207.3
Feb-14	5	-50%	17	0%	0.29	49	-14%	9.80	160	93.2%	220,300	-1.0%	215,000	5.7%	246,200	18.7%	205.9
Mar-14	4	0%	16	14%	0.25	52	-16%	13.00	57	96.8%	221,900	-0.8%	183,000	-38.5%	194,750	-24.5%	207.4
Apr-14	10	11%	24	-8%	0.42	61	-20%	6.10	75	96.0%	224,100	1.0%	236,500	12.6%	264,200	39.9%	209.4
May-14	16	33%	33	50%	0.48	72	-10%	4.50	61	96.1%	225,700	2.1%	229,000	-19.6%	255,525	-6.2%	210.9
Jun-14	16	33%	18	-14%	0.89	68	-20%	4.25	49	97.5%	228,900	1.9%	237,000	-35.9%	233,513	-31.5%	213.9
Jul-14	15	15%	30	88%	0.50	70	-15%	4.67	89	94.4%	227,700	1.2%	235,000	14.1%	217,927	7.0%	212.8
Aug-14	12	20%	26	37%	0.46	73	-12%	6.08	43	96.0%	228,800	0.3%	264,500	8.8%	263,197	5.7%	213.8
Sep-14	8	-47%	21	-28%	0.38	76	-14%	9.50	76	92.5%	228,100	0.6%	186,000	-13.9%	212,375	-6.0%	213.2
Oct-14	5	-69%	19	19%	0.26	67	-13%	13.40	72	94.1%	229,600	1.1%	250,000	13.4%	229,780	-1.5%	214.6
Nov-14	6	-40%	20	186%	0.30	59	-11%	9.83	49	93.7%	226,000	0.7%	152,500	-45.2%	212,333	-23.9%	211.2
Dec-14	2	-67%	12	71%	0.17	62	0%	31.00	103	94.9%	225,600	1.2%	188,950	-44.9%	188,950	-39.3%	210.8
<b>2014</b>	<b>105</b>	<b>-15%</b>	<b>247</b>	<b>14%</b>	<b>0.43</b>	<b>63</b>	<b>-14%</b>	<b>7.15</b>	<b>72</b>	<b>95.4%</b>	<b>225,708</b>	<b>0.9%</b>	<b>235,000</b>	<b>2.2%</b>	<b>235,309</b>	<b>-5.4%</b>	<b>210.9</b>
Jan-15	2	-67%	18	64%	0.11	68	62%	34.00	76	93.2%	223,800	0.9%	218,500	9.3%	218,500	0.6%	209.2
Feb-15	7	40%	13	-24%	0.54	66	35%	9.43	99	95.1%	225,700	2.5%	145,000	-32.6%	178,500	-27.5%	210.9
Mar-15	6	50%	27	69%	0.22	75	44%	12.50	71	96.6%	228,200	2.8%	223,000	21.9%	255,583	31.2%	213.3
Apr-15	15	50%	36	50%	0.42	86	41%	5.73	67	94.1%	230,500	2.9%	200,000	-15.4%	193,960	-26.6%	215.4
May-15	13	-19%	22	-33%	0.59	91	26%	7.00	58	96.4%	225,100	-0.3%	257,000	12.2%	285,985	11.9%	210.4
Jun-15	5	-69%	23	28%	0.22	100	47%	20.00	42	96.0%	226,700	-1.0%	265,000	11.8%	254,000	8.8%	211.9
Jul-15	4	-73%	18	-40%	0.22	103	47%	25.75	123	94.1%	230,900	1.4%	320,000	36.2%	305,750	40.3%	215.8
Aug-15	12	0%	9	-65%	1.33	93	27%	7.75	115	96.3%	230,600	0.8%	200,500	-24.2%	202,125	-23.2%	215.5
Sep-15	10	25%	19	-10%	0.53	89	17%	8.90	94	96.5%	226,100	-0.9%	290,000	55.9%	299,150	40.9%	211.3
Oct-15	10	100%	21	11%	0.48	85	27%	8.50	79	96.6%	227,800	-0.8%	201,000	-19.6%	212,500	-7.5%	212.9
Nov-15	9	50%	14	-30%	0.64	74	25%	8.22	140	94.0%	231,900	2.6%	248,000	62.6%	247,889	16.7%	216.7
Dec-15	4	100%	15	25%	0.27	78	26%	19.50	89	96.4%	230,200	2.0%	213,000	12.7%	195,500	3.5%	215.1
<b>2015</b>	<b>97</b>	<b>-8%</b>	<b>235</b>	<b>-5%</b>	<b>0.41</b>	<b>84</b>	<b>34%</b>	<b>10.39</b>	<b>87</b>	<b>95.6%</b>	<b>228,125</b>	<b>1.1%</b>	<b>225,000</b>	<b>-4.3%</b>	<b>236,033</b>	<b>0.3%</b>	<b>213.2</b>
Jan-16	1	-50%	14	-22%	0.07	83	22%	83.00	62	93.9%	227,900	1.8%	200,000	-8.5%	200,000	-8.5%	213.0
Feb-16	6	-14%	20	54%	0.30	91	38%	15.17	112	95.1%	224,000	-0.8%	185,000	27.6%	185,583	4.0%	209.3
Mar-16	4	-33%	20	-26%	0.20	90	20%	22.50	123	94.2%	226,700	-0.7%	149,000	-33.2%	149,000	-41.7%	211.9
Apr-16	10	-33%	33	-8%	0.30	103	20%	10.30	89	93.8%	223,300	-3.1%	254,500	27.3%	237,750	22.6%	208.7
May-16	8	-38%	18	-18%	0.44	100	10%	12.50	93	94.5%	224,900	-0.1%	199,950	-22.2%	252,363	-11.8%	210.2
Jun-16	5	0%	24	4%	0.21	105	5%	21.00	61	95.1%	226,300	-0.2%	315,000	18.9%	317,400	25.0%	211.5
Jul-16	9	125%	25	39%	0.36	106	3%	11.78	56	95.2%	229,200	-0.7%	265,000	-17.2%	249,089	-18.5%	214.2
Aug-16	10	-17%	16	78%	0.63	104	12%	10.40	57	98.1%	227,900	-1.2%	197,000	-1.7%	241,750	19.6%	213.0
Sep-16	7	-30%	19	0%	0.37	106	19%	15.14	134	95.4%	228,100	0.9%	185,000	-36.2%	225,786	-24.5%	213.2
Oct-16	11	10%	18	-14%	0.61	106	25%	9.64	120	94.2%	226,800	-0.4%	275,000	36.8%	262,955	23.7%	212.0
Nov-16	7	-22%	19	36%	0.37	108	46%	15.43	47	95.1%	224,300	-3.3%	315,000	27.0%	264,414	6.7%	209.6
Dec-16	3	-25%	5	-67%	0.60	95	22%	31.67	109	91.0%	220,500	-4.2%	300,000	40.8%	316,667	62.0%	206.1
<b>2016</b>	<b>81</b>	<b>-16%</b>	<b>231</b>	<b>-2%</b>	<b>0.35</b>	<b>100</b>	<b>19%</b>	<b>14.78</b>	<b>88</b>	<b>94.9%</b>	<b>225,825</b>	<b>-1.0%</b>	<b>225,000</b>	<b>0.0%</b>	<b>244,767</b>	<b>3.7%</b>	<b>211.1</b>
Jan-17	2	100%	16	14%	0.13	102	23%	51.00	261	89.4%	223,700	-1.8%	147,500	-26.3%	147,500	-26.3%	209.1
Feb-17	1	-83%	12	-40%	0.08	107	18%	107.00	82	95.2%	221,900	-0.9%	238,000	28.6%	238,000	28.2%	207.4
Mar-17	6	50%	25	25%	0.24	114	27%	19.00	126	95.0%	223,100	-1.6%	304,000	104.0%	315,167	111.5%	208.5
Apr-17	5	-50%	29	-12%	0.17	121	17%	24.20	92	96.5%	228,300	2.2%	280,000	10.0%	294,480	23.9%	213.4
May-17	19	138%	22	22%	0.86	114	14%	6.00	118	95.4%	227,500	1.2%	203,000	1.5%	221,642	-12.2%	212.6
Jun-17	13	160%	29	21%	0.45	113	8%	8.69	92	94.6%	225,200	-0.5%	230,000	-27.0%	248,531	-21.7%	210.5
Jul-17	8	-11%	16	-36%	0.50	112	6%	14.00	87	92.2%	226,400	-1.2%	201,250	-24.1%	201,194	-19.2%	211.6
Aug-17	9	-10%	18	13%	0.50	114	10%	12.67	99	95.1%	224,800	-1.4%	303,000	53.8%	283,222	17.2%	210.1
Sep-17	11	57%	12	-37%	0.92	96	-9%	8.73	95	95.0%	225,400	-1.2%	190,000	2.7%	202,091	-10.5%	210.7
Oct-17	11	0%	17	-6%	0.65	89	-16%	8.09	153	93.7%	223,400	-1.5%	212,000	-22.9%	242,273	-7.9%	208.8
Nov-17	5	-29%	17	-11%	0.29	91	-16%	18.20	158	91.9%	219,600	-2.1%	360,000	14.3%	324,800	22.8%	205.2
Dec-17	5	67%	8	60%	0.63	87	-8%	17.40	110	91.5%	225,100	2.1%	210,000	-30.0%	230,200	-27.3%	210.4
<b>2017</b>	<b>95</b>	<b>17%</b>	<b>221</b>	<b>-4%</b>	<b>0.43</b>	<b>105</b>	<b>5%</b>	<b>13.26</b>	<b>115</b>	<b>94.3%</b>	<b>224,533</b>	<b>-0.6%</b>	<b>223,000</b>	<b>-0.9%</b>	<b>243,790</b>	<b>-0.4%</b>	<b>209.9</b>
Jan-18	5	150%	12	-25%	0.42	89	-13%	17.80	143	91.8%	220,700	-1.3%	145,000	-1.7%	136,500	-7.5%	206.3
Feb-18	3	200%	13	8%	0.23	93	-13%	31.00	63	93.9%	220,800	-0.5%	164,000	-31.1%	200,333	-15.8%	206.4
Mar-18	6	0%	19	-24%	0.32	102	-11%	17.00	143	90.9%	218,900	-1.9%	184,000	-39.5%	172,167	-45.4%	204.6
Apr-18	6	20%	17	-41%	0.35	101	-17%	16.83	114	93.9%	216,600	-5.1%	233,000	-16.8%	223,417	-24.1%	202.4
May-18	19	0%	31	41%	0.61	102	-11%	5.37	110	94.5%	218,800	-3.8%	220,000	8.4%	250,895	13.2%	204.5
Jun-18	7	-46%	20	-31%	0.35	109	-4%	15.57	86	94.5%	219,700	-2.4%	180,000	-21.7%	170,714	-31.3%	205.3
Jul-18	5	-38%	20	25%	0.25	114	2%	22.80	81	91.6%	221,200	-2.3%	165,000	-18.0%	166,760	-17.1%	206.7
Aug-18	7	-22%	19	6%	0.37	119	4%	17.00	110								



HUMBOLDT																	
	Sales	Y/Y%	New Listings	Y/Y%	S/NL Ratio	Inventory	Y/Y%	Months of Supply	DOM	SP/LP	Benchmark Price	Y/Y%	Median Price	Y/Y%	Average Price	Y/Y%	Index
Jan-13	4	33%	10	-41%	0.40	38	6%	9.50	70	96.7%	214,800	0.6%	267,500	170.2%	265,625	168.3%	200.2
Feb-13	8	-20%	16	33%	0.50	42	11%	5.25	83	93.9%	222,600	7.0%	228,500	4.6%	226,019	-5.6%	207.5
Mar-13	4	-60%	10	-29%	0.40	43	8%	10.75	60	94.6%	224,400	8.2%	297,500	5.9%	258,000	-5.0%	209.1
Apr-13	7	0%	26	117%	0.27	59	51%	8.43	87	91.0%	221,900	6.6%	222,000	23.3%	216,143	6.8%	206.8
May-13	10	25%	16	23%	0.63	59	51%	5.90	102	96.8%	220,600	2.5%	317,500	98.4%	292,275	67.4%	205.6
Jun-13	12	50%	18	13%	0.67	61	33%	5.08	119	97.3%	224,500	4.0%	369,750	53.1%	340,833	42.2%	209.2
Jul-13	11	-27%	16	33%	0.69	60	43%	5.45	54	95.9%	225,400	2.8%	206,000	-20.2%	211,045	-16.1%	210.1
Aug-13	10	25%	15	0%	0.67	59	31%	5.90	54	94.0%	228,800	4.9%	243,000	-4.9%	249,100	0.8%	213.2
Sep-13	12	140%	24	33%	0.50	64	16%	5.33	64	96.9%	228,000	5.8%	230,500	39.7%	241,658	65.3%	212.5
Oct-13	14	27%	15	7%	0.93	56	12%	4.00	69	94.8%	228,400	5.3%	220,500	14.5%	240,748	21.1%	212.9
Nov-13	10	-23%	5	25%	2.00	45	15%	4.50	126	97.0%	225,300	3.7%	278,500	19.0%	279,100	10.1%	210.0
Dec-13	6	50%	7	40%	0.86	41	21%	6.83	84	98.2%	223,400	3.3%	343,000	78.0%	311,483	57.8%	208.2
<b>2013</b>	<b>108</b>	<b>6%</b>	<b>178</b>	<b>17%</b>	<b>0.61</b>	<b>52</b>	<b>25%</b>	<b>5.81</b>	<b>82</b>	<b>95.8%</b>	<b>224,008</b>	<b>4.5%</b>	<b>247,500</b>	<b>15.4%</b>	<b>260,844</b>	<b>16.2%</b>	<b>208.8</b>
Jan-14	6	50%	11	10%	0.55	33	-13%	5.50	112	94.8%	222,000	3.4%	200,000	-25.2%	217,300	-18.2%	206.9
Feb-14	3	-63%	15	-6%	0.20	40	-5%	13.33	140	94.0%	219,900	-1.2%	266,000	16.4%	302,000	33.6%	204.9
Mar-14	4	0%	15	50%	0.27	45	5%	11.25	57	96.8%	221,600	-1.2%	183,000	-38.5%	194,750	-24.5%	206.5
Apr-14	9	29%	22	-15%	0.41	53	-10%	5.89	76	96.1%	223,800	0.9%	260,000	17.1%	275,778	27.6%	208.6
May-14	15	50%	29	81%	0.52	63	7%	4.20	64	96.0%	225,400	2.2%	235,000	-26.0%	260,227	-11.0%	210.1
Jun-14	14	17%	16	-11%	0.88	60	-2%	4.29	48	97.9%	228,800	1.9%	237,000	-35.9%	239,943	-29.6%	213.2
Jul-14	11	0%	27	69%	0.41	63	5%	5.73	73	93.7%	227,400	0.9%	235,000	14.1%	214,264	1.5%	211.9
Aug-14	11	10%	25	67%	0.44	67	14%	6.09	44	95.9%	228,300	-0.2%	265,000	9.1%	263,124	5.6%	212.8
Sep-14	6	-50%	16	-33%	0.38	69	8%	11.50	84	92.6%	227,800	-0.1%	168,500	-26.9%	190,333	-21.2%	212.3
Oct-14	4	-71%	15	0%	0.27	58	4%	14.50	71	94.4%	230,000	0.7%	262,500	19.0%	276,250	14.7%	214.4
Nov-14	5	-50%	17	240%	0.29	49	9%	9.80	47	94.3%	225,900	0.3%	180,000	-35.4%	233,200	-16.4%	210.5
Dec-14	1	-83%	9	29%	0.11	52	27%	52.00	122	92.6%	225,400	0.9%	202,900	-40.8%	202,900	-34.9%	210.1
<b>2014</b>	<b>89</b>	<b>-18%</b>	<b>217</b>	<b>22%</b>	<b>0.41</b>	<b>54</b>	<b>4%</b>	<b>7.33</b>	<b>68</b>	<b>95.5%</b>	<b>225,525</b>	<b>0.7%</b>	<b>235,000</b>	<b>-5.1%</b>	<b>242,703</b>	<b>-7.0%</b>	<b>210.2</b>
Jan-15	2	-67%	14	27%	0.14	56	70%	28.00	76	93.2%	223,000	0.5%	218,500	9.3%	218,500	0.6%	207.8
Feb-15	5	67%	12	-20%	0.42	55	38%	11.00	101	94.7%	224,800	2.2%	145,000	-45.5%	173,000	-42.7%	209.5
Mar-15	5	25%	24	60%	0.21	64	42%	12.80	78	96.0%	228,100	2.9%	231,000	26.2%	263,700	35.4%	212.6
Apr-15	12	33%	31	41%	0.39	75	42%	6.25	69	94.6%	231,100	3.3%	210,000	-19.2%	202,200	-26.7%	215.4
May-15	12	-20%	15	-48%	0.80	74	17%	6.17	62	96.4%	224,900	-0.2%	284,750	21.2%	293,150	12.7%	209.6
Jun-15	4	-71%	18	13%	0.22	79	32%	19.75	29	95.8%	226,500	-1.0%	292,500	23.4%	273,750	14.1%	211.1
Jul-15	4	-64%	15	-44%	0.27	81	29%	20.25	123	94.1%	231,600	1.8%	320,000	36.2%	305,750	42.7%	215.8
Aug-15	10	-9%	7	-72%	1.43	71	6%	7.10	96	97.2%	232,000	1.6%	200,500	-24.3%	203,150	-22.8%	216.2
Sep-15	9	50%	18	13%	0.50	67	-3%	7.44	94	96.4%	227,200	-0.3%	280,000	66.2%	296,833	56.0%	211.7
Oct-15	6	50%	17	13%	0.35	66	14%	11.00	71	96.9%	229,000	-0.4%	164,000	-37.5%	185,167	-33.0%	213.4
Nov-15	6	20%	11	-35%	0.55	60	22%	10.00	152	93.5%	233,600	3.4%	257,500	43.1%	260,167	11.6%	217.7
Dec-15	2	100%	13	44%	0.15	65	25%	32.50	115	96.0%	231,700	2.8%	213,000	5.0%	213,000	5.0%	215.9
<b>2015</b>	<b>77</b>	<b>-13%</b>	<b>195</b>	<b>-10%</b>	<b>0.39</b>	<b>68</b>	<b>25%</b>	<b>10.56</b>	<b>86</b>	<b>95.6%</b>	<b>228,625</b>	<b>1.4%</b>	<b>236,000</b>	<b>0.4%</b>	<b>242,645</b>	<b>0.0%</b>	<b>213.1</b>
Jan-16	1	-50%	12	-14%	0.08	68	21%	68.00	62	93.9%	230,200	3.2%	200,000	-8.5%	200,000	-8.5%	214.5
Feb-16	4	-20%	17	42%	0.24	76	38%	19.00	98	94.8%	226,100	0.6%	187,000	29.0%	206,750	19.5%	210.7
Mar-16	3	-40%	18	-25%	0.17	76	19%	25.33	149	94.2%	228,700	0.3%	154,000	-33.3%	162,667	-38.3%	213.1
Apr-16	8	-33%	28	-10%	0.29	87	16%	10.88	62	94.3%	224,400	-2.9%	284,500	35.5%	270,000	33.5%	209.1
May-16	7	-42%	15	0%	0.47	83	12%	11.86	98	94.4%	225,900	0.4%	185,000	-35.0%	257,714	-12.1%	210.5
Jun-16	4	0%	20	11%	0.20	88	11%	22.00	65	95.5%	227,600	0.5%	338,500	15.7%	330,500	20.7%	212.1
Jul-16	7	75%	17	13%	0.41	84	4%	12.00	58	94.4%	230,600	-0.4%	189,900	-40.7%	240,271	-21.4%	214.9
Aug-16	9	-10%	15	114%	0.60	83	17%	9.22	61	98.3%	229,700	-1.0%	229,000	14.2%	250,611	23.4%	214.1
Sep-16	7	-22%	17	-6%	0.41	84	25%	12.00	134	95.4%	229,900	1.2%	185,000	-33.9%	225,786	-23.9%	214.3
Oct-16	9	50%	15	-12%	0.60	86	30%	9.56	122	93.9%	228,600	-0.2%	275,000	67.7%	273,056	47.5%	213.0
Nov-16	6	0%	17	55%	0.35	88	47%	14.67	48	94.8%	226,400	-3.1%	240,250	-6.7%	244,317	-6.1%	211.0
Dec-16	3	50%	4	-69%	0.75	75	15%	25.00	109	91.0%	222,100	-4.1%	300,000	40.8%	316,667	48.7%	207.0
<b>2016</b>	<b>68</b>	<b>-12%</b>	<b>195</b>	<b>0%</b>	<b>0.35</b>	<b>82</b>	<b>20%</b>	<b>14.38</b>	<b>87</b>	<b>94.8%</b>	<b>227,517</b>	<b>-0.5%</b>	<b>230,750</b>	<b>-2.2%</b>	<b>252,828</b>	<b>4.2%</b>	<b>212.0</b>
Jan-17	2	100%	13	8%	0.15	80	18%	40.00	261	89.4%	225,600	-2.0%	147,500	-26.3%	147,500	-26.3%	210.3
Feb-17	1	-75%	8	-53%	0.13	83	9%	83.00	82	95.2%	222,900	-1.4%	238,000	27.3%	238,000	15.1%	207.7
Mar-17	6	100%	20	11%	0.30	86	13%	14.33	126	95.0%	224,300	-1.9%	304,000	97.4%	315,167	93.8%	209.0
Apr-17	4	-50%	18	-36%	0.22	87	0%	21.75	69	96.8%	230,300	2.6%	289,500	1.8%	321,100	18.9%	214.6
May-17	13	86%	19	27%	0.68	83	0%	6.38	94	95.5%	230,400	2.0%	222,500	20.3%	231,338	-10.2%	214.7
Jun-17	12	200%	21	5%	0.57	77	-13%	6.42	98	94.3%	228,000	0.2%	217,500	-35.7%	246,325	-25.5%	212.5
Jul-17	6	-14%	15	-12%	0.40	81	-4%	13.50	86	91.4%	228,800	-0.8%	201,250	6.0%	199,108	-17.1%	213.2
Aug-17	7	-22%	15	0%	0.47	84	1%	12.00	100	95.2%	227,000	-1.2%	303,000	32.3%	284,500	13.5%	211.6
Sep-17	9	29%	10	-41%	0.90	67	-20%	7.44	89	95.1%	227,100	-1.2%	212,000	14.6%	213,667	-5.4%	211.6
Oct-17	9	0%	14	-7%	0.64	64	-26%	7.11	143	93.8%	224,600	-1.7%	259,000	-5.8%	255,611	-6.4%	209.3
Nov-17	4	-33%	10	-41%	0.40	65	-26%	16.25	155	91.3%	221,600	2.1%	267,000	11.1%	314,750	28.8%	206.5
Dec-17	2	-33%	6	50%	0.33	64	-15%	32.00	114	94.4%	227,700	2.5%	250,000	-16.7%	250,000	-21.1%	212.2
<b>2017</b>	<b>75</b>	<b>10%</b>	<b>169</b>	<b>-13%</b>	<b>0.44</b>	<b>77</b>	<b>-6%</b>	<b>12.28</b>	<b>109</b>	<b>94.4%</b>	<b>226,525</b>	<b>-0.4%</b>	<b>233,500</b>	<b>1.2%</b>	<b>251,205</b>	<b>-0.6%</b>	<b>211.1</b>
Jan-18	4	100%	7	-46%	0.57	65	-19%	16.25	126	91.4%	223,700	-0.8%	115,500	-21.7%	134,375	-8.9%	208.5
Feb-18	2	100%	12	50%	0.17	71	-14%	35.50	62	92.4%	224,600	0.8%	157,000	-34.0%	157,000	-34.0%	209.3
Mar-18	4	-33%	13	-35%	0.31	76	-12%	19.00	140	89.0%	221,500	-1.2%	195,000	-35.9%	168,500	-46.5%	206.4
Apr-18	4	0%	12	-33%	0.33	74	-15%	18.50	55	93.5%	218,500	-5.1%	188,000	-35.1%	200,875	-37.4%	203.6
May-18	18	38%	26	37%	0.69	72	-13%	4.00	98	94.7%	220,700	-4.2%	223,250	0.3%	254,833	10.2%	205.7
Jun-18	5	-58%	16	-24%	0.31	79	3%	15.80	105	95.2%	221,600	-2.8%	180,000	-17.2%	175,000	-29.0%	206.5
Jul-18	4	-33%	20	33%	0.20	87	7%	21.75	96	90.7%	223,800	-2.2%	177,500	-11.8%	172,475	-13.4%	208.6
Aug-18	7	0%	16	7%	0.44	92	10%	13.14	110	94.1%	224,100	-1.3%	230,000	-2			

