




# SASKATOON - MAY 2024

The City of Saskatoon reported 573 sales in May, up seven per cent year-over-year and 28 per cent above long-term, 10-year averages.

Inventory levels decreased by 21 per cent year-over-year and continue to sit nearly 50 per cent below long-term, 10-year trends. Market conditions remain extremely tight, as the Bridge City is again reporting the lowest inventory levels in the province.

The City of Saskatoon reported a benchmark price of \$397,200 in May, down slightly from 398,600 in April and nearly six per cent higher than May 2023.




**SALES**  
**573**

↑ 6.7% Y/Y | ↑ 12.0% YTD

VS. 10-YEAR AVERAGE

↑ 27.6% | ↑ 20.7% YTD



**NEW LISTINGS**  
**799**

↑ 4.4% Y/Y | ↑ 0.2% YTD

VS. 10-YEAR AVERAGE

↓ 13.3% | ↓ 21.1% YTD




**INVENTORY**  
**878**

↓ 20.6% Y/Y | Monthly trend\*

VS. 10-YEAR AVERAGE

↓ 49.9% | ↓ 47.9% YTD



**MONTHS OF SUPPLY**  
**1.53**

↓ 25.6% Y/Y | Monthly trend\*

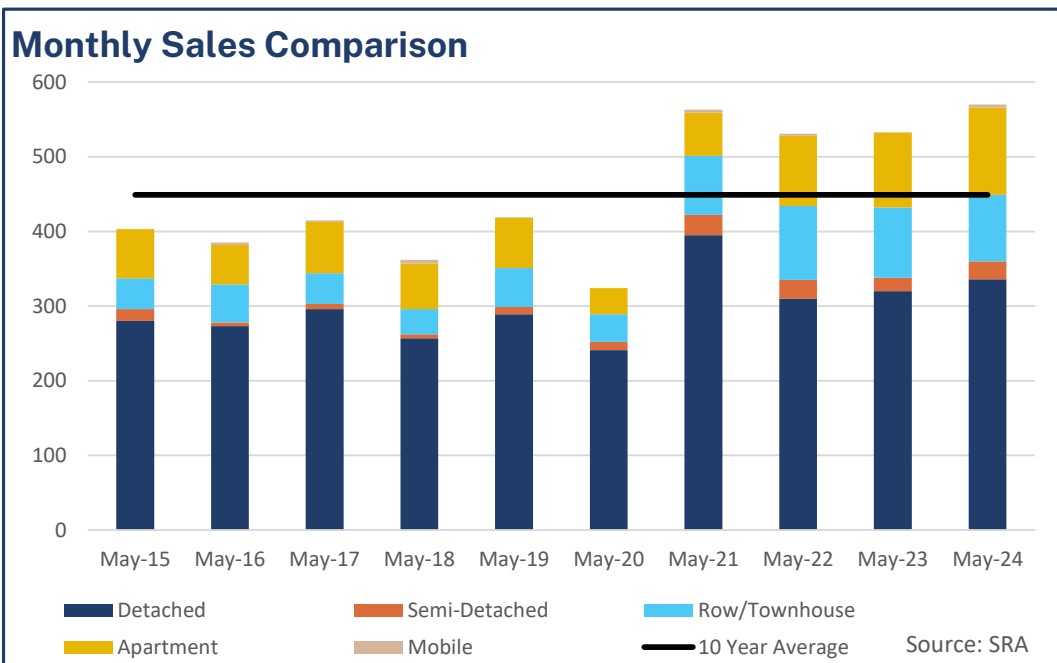
VS. 10-YEAR AVERAGE

↓ 62.7% | ↓ 59.2% YTD

**TOTAL RESIDENTIAL BENCHMARK PRICE**

**\$ 397,200** ↑ **5.8%** Y/Y

Monthly trend\*





# SASKATOON - MAY 2024

## May 2024

	Sales		New Listings		Inventory		Months of Supply		DOM	Benchmark		Avg Price	
	Actual	Y/Y%	Actual	Y/Y%	Actual	Y/Y%	Actual	Y/Y%	Actual	Actual	Y/Y%	Actual	Y/Y%
Detached	336	5%	495	7%	549	-16%	1.63	-20%	30	\$455,000	7%	\$475,820	2%
Semi-Detached	24	33%	28	-18%	50	-14%	2.08	-35%	32	\$478,200	2%	\$443,988	7%
Row/Townhouse	89	-5%	116	7%	92	-30%	1.03	-26%	23	\$325,600	10%	\$318,825	3%
Apartment	117	17%	144	-9%	167	-32%	1.43	-42%	33	\$234,600	15%	\$227,670	10%
Acreage	0	-	1	-	1	-	-	-	-	-	-	-	-
Mobile	4	300%	4	100%	6	0%	1.50	-75%	22	-	-	\$63,125	643%
Mutli-Family	3	-25%	11	450%	13	117%	4.33	189%	5	-	-	\$504,333	-1%
<b>Total Residential</b>	<b>573</b>	<b>7%</b>	<b>799</b>	<b>4%</b>	<b>878</b>	<b>-21%</b>	<b>1.53</b>	<b>-26%</b>	<b>29</b>	<b>\$397,200</b>	<b>6%</b>	<b>\$396,701</b>	<b>2%</b>

## 10-Year Averages

	Sales		New Listings		Inventory		Months of Supply		DOM	Benchmark		Avg Price	
	Avg	%Diff	Avg	%Diff	Avg	%Diff	Avg	%Diff	Avg	Avg	%Diff	Avg	%Diff
Total Residential	449	28%	922	-13%	1,753	-50%	4.11	-63%	41	\$335,200	18%	\$360,946	10%

## Year-to-Date

### May 2024

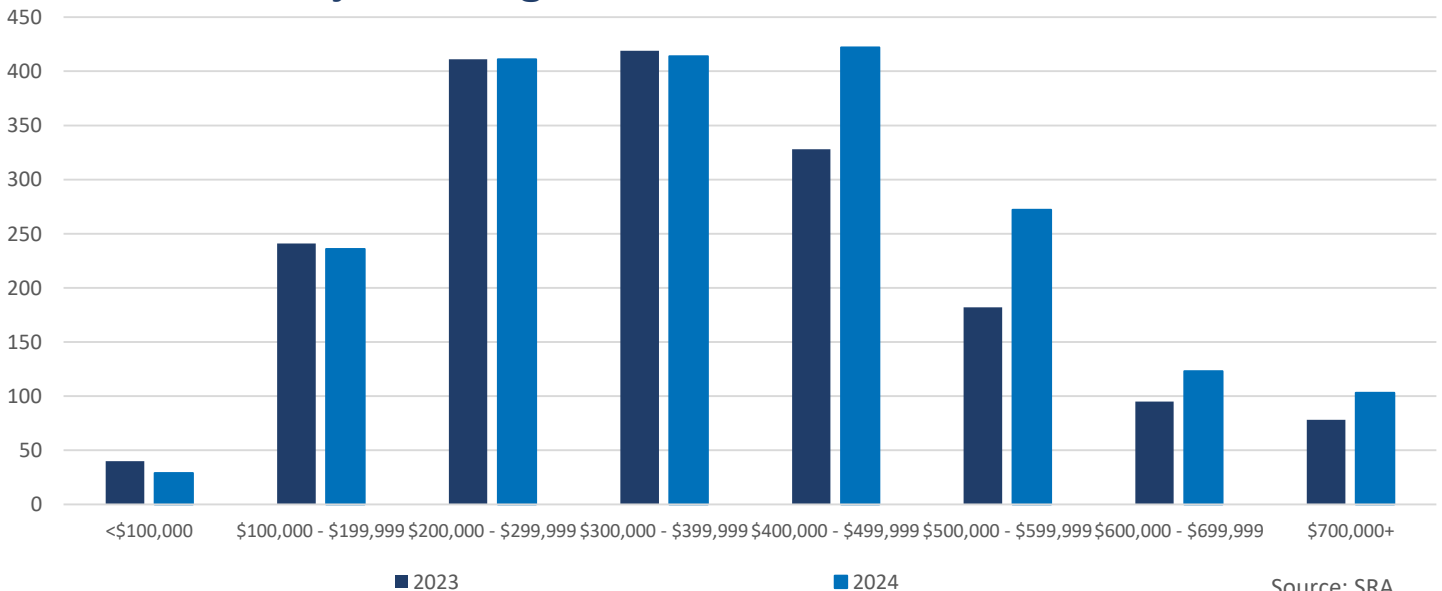
	Sales		New Listings		Inventory		Months of Supply		DOM	Benchmark		Avg Price	
	Actual	Y/Y%	Actual	Y/Y%	Actual	Y/Y%	Actual	Y/Y%	Actual	Actual	Y/Y%	Actual	Y/Y%
Detached	1,179	9%	1,748	1%	499	-16%	2.12	-23%	38	\$441,660	6%	\$460,941	4%
Semi-Detached	109	65%	129	-5%	49	2%	2.27	-38%	47	\$474,660	4%	\$433,241	10%
Row/Townhouse	307	13%	381	-2%	78	-38%	1.27	-45%	27	\$318,800	11%	\$316,791	6%
Apartment	393	13%	567	1%	157	-29%	2.00	-37%	35	\$227,980	10%	\$232,750	12%
Acreage	0	-	1	-	0	-	-	-	-	-	-	-	-
Mobile	9	13%	13	8%	4	-41%	2.22	-48%	35	-	-	\$91,444	-34%
Mutli-Family	13	-32%	24	4%	7	-13%	2.62	27%	41	-	-	\$474,000	4%
<b>Total Residential</b>	<b>2,010</b>	<b>12%</b>	<b>2,863</b>	<b>0%</b>	<b>794</b>	<b>-21%</b>	<b>1.98</b>	<b>-30%</b>	<b>36</b>	<b>\$388,200</b>	<b>5%</b>	<b>\$391,235</b>	<b>5%</b>

## 10-Year Averages

	Sales		New Listings		Inventory		Months of Supply		DOM	Benchmark		Avg Price	
	Avg	%Diff	Avg	%Diff	Avg	%Diff	Avg	%Diff	Avg	Avg	%Diff	Avg	%Diff
Total Residential	1,665	21%	3,627	-21%	1,525	-48%	4.85	-59%	47	\$330,388	17%	\$351,785	11%

## Residential Sales by Price Range

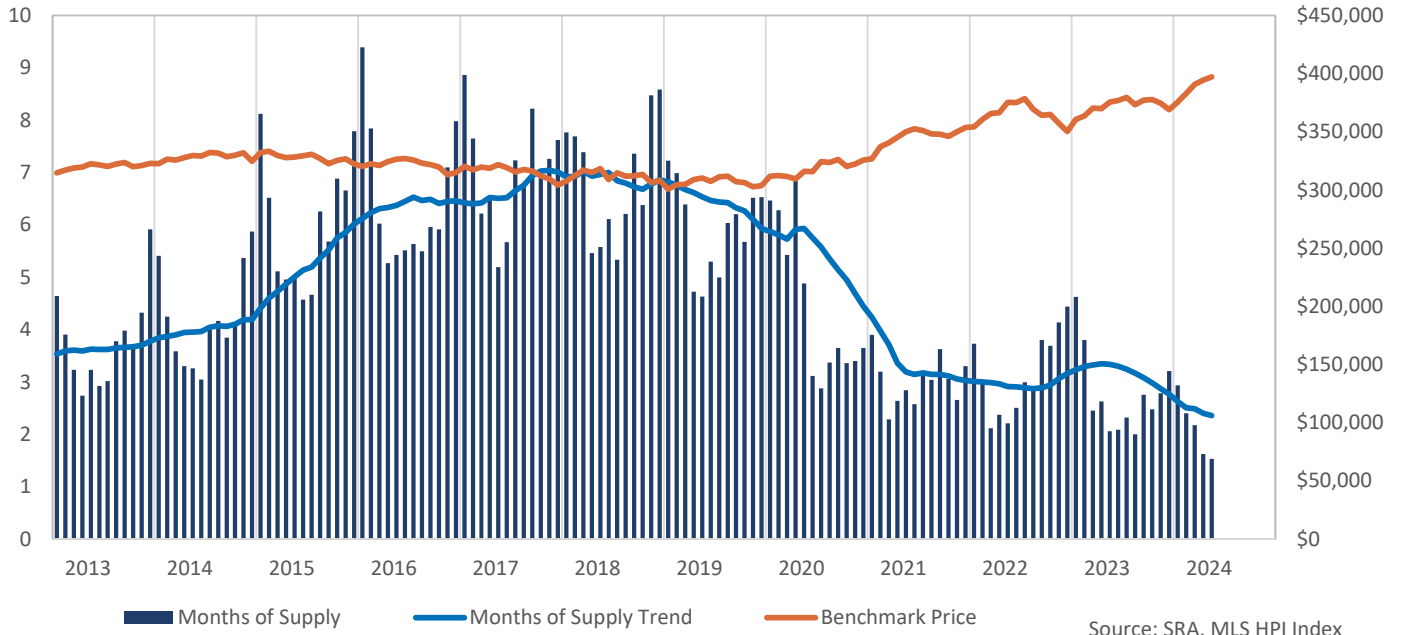
YTD-MAY



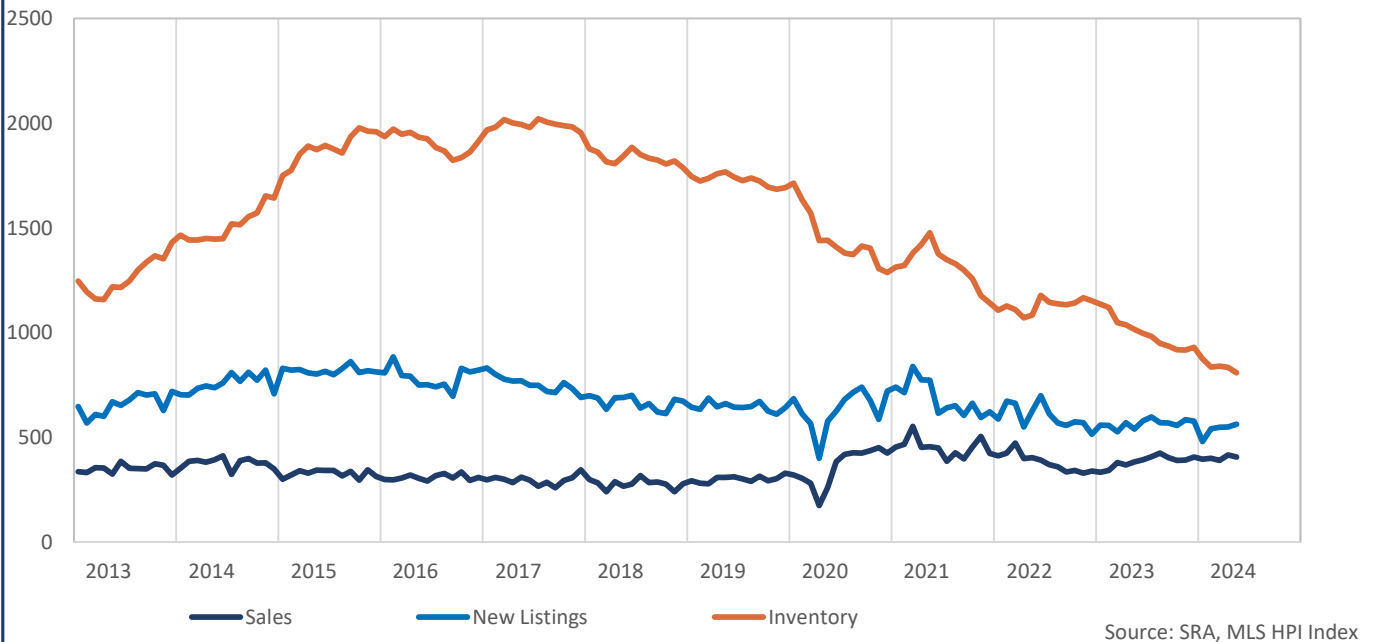
Source: SRA



### Residential Months of Supply and Price

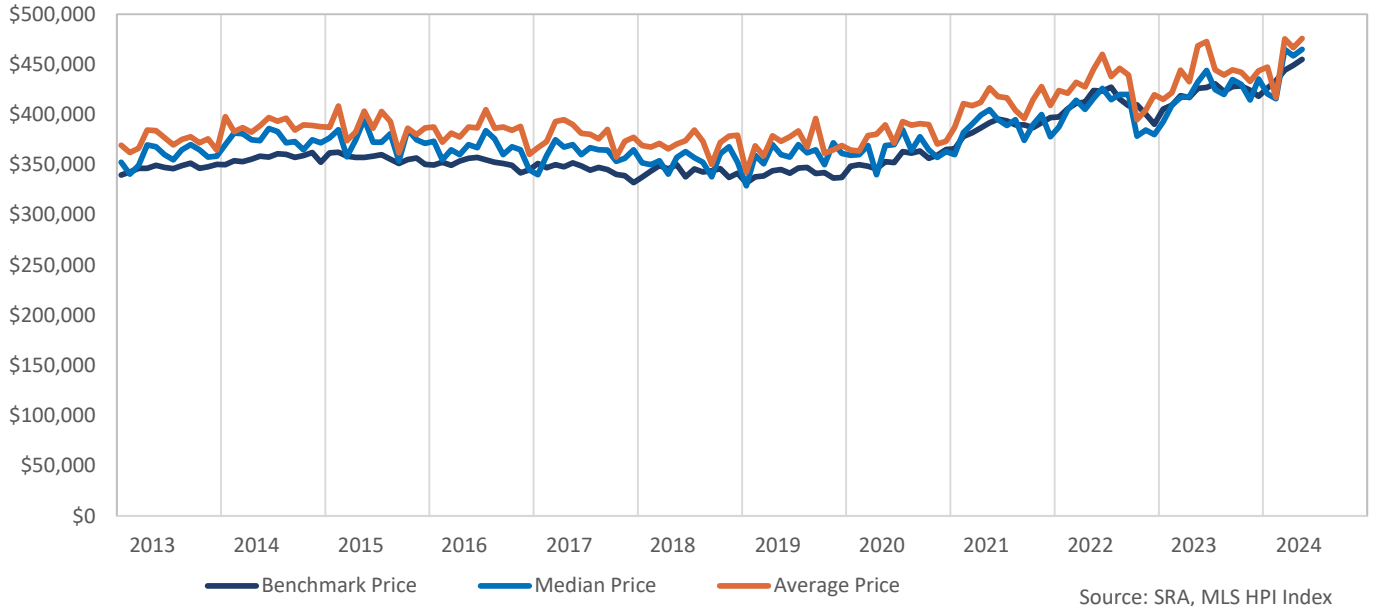


### Residential Stats - Seasonally Adjusted

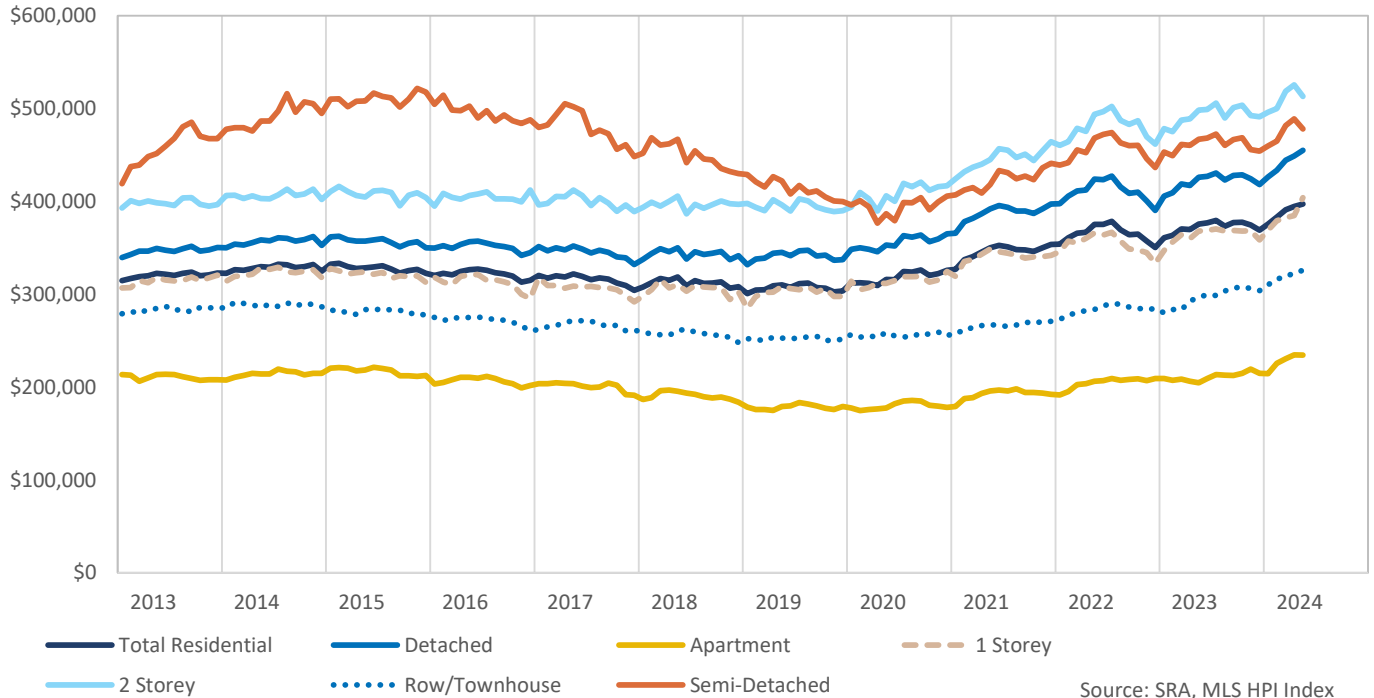




### Detached Pricing



### Benchmark Price





### HPI Benchmark Attributes

	Composite
Bedrooms, Above Ground	3
Bathrooms, Full	2
Bathrooms, Half	0
Garage	Attached, Single width
Gross Living Area, Above Ground (Sq. Ft.)	1167
Lot Size	-
Fireplaces, Number of	0
Year Built	1988
May 2024 Benchmark Price	\$397,200
Detached Share of Sales, Last 3 Years	62%
Semi-Detached Share of Sales, Last 3 Years	2%
Apartment Share of Sales, Last 3 Years	17%
Townhouse Share of Sales, Last 3 Years	15%

	Detached	1 Storey	2 Storey
Bedrooms, Above Ground	3	3	3
Bathrooms, Full	2	2	2
Bathrooms, Half	0	0	1
Garage	Attached, Double width	Attached, Single width	Attached, Double width
Gross Living Area, Above Ground (Sq. Ft.)	1243	1102	1495
Lot Size	5657	5865	5231
Fireplaces, Number of	0	0	0
Year Built	1979	1971	2007
May 2024 Benchmark Price	\$455,000	\$404,000	\$513,100
Share of Total Sales, Last 3 Years	62%	36%	32%

	Semi-Detached	Row/Townhouse	Apartment
Bedrooms, Above Ground	3	3	2
Bathrooms, Full	2	1	1
Bathrooms, Half	1	1	0
Garage	Attached, Single width	Attached, Single width	-
Gross Living Area, Above Ground (Sq. Ft.)	1155	1106	927
Fireplaces, Number of	0	0	0
Year Built	2013	2010	1993
May 2024 Benchmark Price	\$478,200	\$325,600	\$234,600
Share of Total Sales, Last 3 Years	2%	15%	17%

SASKATOON

	Sales	Y/Y%	New Listings	Y/Y%	S/NL Ratio	Inventory	Y/Y%	Months of Supply	DOM	SP/PLP	Benchmark Price	Y/Y%	Median Price	Y/Y%	Average Price	Y/Y%	Index
Jan-13	223	-10%	579	12%	0.39	1,035	4%	4.64	45	98.2%	314,800	5.8%	325,000	5.5%	337,625	5.7%	245.7
Feb-13	267	-18%	479	-16%	0.56	1,043	0%	3.91	39	98.7%	317,100	5.7%	308,500	-0.5%	329,711	5.6%	247.5
Mar-13	346	-5%	617	-5%	0.56	1,118	0%	3.23	37	98.4%	318,800	4.4%	318,750	2.8%	334,868	0.6%	248.9
Apr-13	432	5%	758	3%	0.57	1,182	-2%	2.74	34	98.1%	319,800	4.2%	339,950	0.9%	357,725	4.2%	249.6
May-13	427	-8%	906	12%	0.47	1,379	4%	3.23	30	98.3%	322,600	4.9%	339,900	7.9%	356,616	5.9%	251.8
Jun-13	472	7%	760	4%	0.62	1,380	5%	2.92	40	98.3%	321,500	3.6%	328,200	4.2%	351,157	5.0%	251.0
Jul-13	465	5%	795	11%	0.58	1,403	5%	3.02	35	98.1%	320,200	3.0%	324,900	3.1%	341,838	2.5%	250.0
Aug-13	381	0%	750	21%	0.51	1,440	9%	3.78	39	98.1%	322,400	2.9%	337,000	3.7%	343,148	0.9%	251.7
Sep-13	360	8%	749	28%	0.48	1,433	13%	3.98	39	97.9%	323,700	4.6%	327,000	5.5%	343,111	5.0%	252.7
Oct-13	378	12%	709	18%	0.53	1,389	15%	3.67	37	97.7%	320,000	2.1%	338,950	6.1%	345,026	2.8%	249.8
Nov-13	294	5%	473	5%	0.62	1,271	15%	4.32	52	97.3%	320,900	4.0%	319,920	-5.2%	344,763	-0.6%	250.5
Dec-13	186	2%	334	33%	0.56	1,100	21%	5.91	48	97.8%	322,800	2.8%	330,450	3.3%	343,202	1.5%	252.0
<b>2014</b>	<b>4,231</b>	<b>0%</b>	<b>7,909</b>	<b>9%</b>	<b>0.53</b>	<b>1,264</b>	<b>7%</b>	<b>3.59</b>	<b>39</b>	<b>98.1%</b>	<b>320,383</b>	<b>4.0%</b>	<b>329,500</b>	<b>3.9%</b>	<b>345,208</b>	<b>3.4%</b>	<b>250.1</b>
Jan-14	228	2%	639	10%	0.36	1,233	19%	5.41	51	97.7%	322,600	2.5%	331,250	1.9%	354,497	5.0%	251.8
Feb-14	299	12%	578	21%	0.52	1,270	22%	4.25	43	97.8%	326,400	2.9%	337,400	9.4%	350,692	6.4%	254.8
Mar-14	386	12%	772	25%	0.50	1,385	24%	3.59	44	98.2%	325,800	2.2%	349,900	9.8%	353,242	5.5%	254.3
Apr-14	455	5%	886	17%	0.51	1,501	27%	3.30	41	98.1%	327,800	2.5%	341,000	0.3%	353,550	-1.2%	255.9
May-14	498	17%	954	5%	0.52	1,623	18%	3.26	36	97.7%	329,700	2.2%	336,800	-0.9%	355,677	-0.3%	257.4
Jun-14	533	13%	917	21%	0.58	1,625	18%	3.05	33	97.9%	329,100	2.4%	350,000	6.6%	360,974	2.8%	256.9
Jul-14	424	-9%	945	19%	0.45	1,695	21%	4.00	37	97.9%	332,300	3.8%	351,500	8.2%	364,439	6.6%	259.4
Aug-14	403	6%	779	4%	0.52	1,679	17%	4.17	42	97.8%	331,800	2.9%	335,000	-0.6%	352,862	2.8%	259.0
Sep-14	431	20%	910	21%	0.47	1,658	16%	3.85	40	97.8%	328,700	1.5%	342,000	4.6%	355,084	3.5%	256.6
Oct-14	385	2%	776	9%	0.50	1,593	15%	4.14	44	97.7%	329,900	3.1%	345,000	1.8%	361,381	4.7%	257.5
Nov-14	292	-1%	611	29%	0.48	1,568	23%	5.37	40	97.6%	323,100	3.5%	349,900	9.4%	360,187	4.5%	259.3
Dec-14	216	16%	345	3%	0.63	1,269	15%	5.88	48	97.6%	324,700	0.6%	337,000	2.0%	348,453	1.6%	253.5
<b>2015</b>	<b>4,550</b>	<b>8%</b>	<b>9,112</b>	<b>15%</b>	<b>0.50</b>	<b>1,508</b>	<b>19%</b>	<b>3.98</b>	<b>40</b>	<b>97.8%</b>	<b>328,408</b>	<b>2.5%</b>	<b>342,000</b>	<b>3.8%</b>	<b>356,436</b>	<b>3.3%</b>	<b>256.4</b>
Jan-15	183	-20%	731	14%	0.25	1,486	21%	8.12	55	98.0%	332,300	3.0%	330,000	-0.4%	354,724	0.1%	259.4
Feb-15	241	-19%	659	14%	0.37	1,571	24%	6.52	49	97.9%	333,200	2.1%	338,000	0.2%	364,554	4.0%	260.1
Mar-15	349	-10%	888	15%	0.39	1,785	29%	5.11	50	97.9%	329,600	1.2%	330,000	-5.7%	340,420	-3.6%	257.3
Apr-15	397	-13%	961	8%	0.41	1,968	31%	4.96	45	98.0%	327,900	0.0%	342,500	0.4%	350,853	-0.8%	256.0
May-15	419	-16%	1,001	5%	0.42	2,087	29%	4.98	44	98.0%	328,400	-0.4%	355,800	5.6%	366,474	3.0%	256.4
Jun-15	464	-13%	1,022	11%	0.45	2,121	31%	4.57	42	97.9%	329,500	0.1%	350,000	0.0%	361,328	0.1%	257.2
Jul-15	446	5%	925	-2%	0.48	2,082	23%	4.67	48	97.4%	330,700	-0.5%	345,000	-1.8%	359,395	-1.4%	258.2
Aug-15	328	-19%	847	9%	0.39	2,053	22%	6.26	50	97.4%	327,000	-1.4%	348,425	4.0%	352,239	-0.2%	255.3
Sep-15	362	-16%	973	7%	0.37	2,056	24%	5.68	44	97.3%	322,700	-1.8%	330,000	-3.5%	333,524	-6.1%	251.9
Oct-15	291	-24%	782	1%	0.37	2,004	26%	6.89	50	97.4%	325,500	-1.3%	346,500	0.4%	354,713	-1.8%	254.1
Nov-15	281	-4%	639	5%	0.44	1,870	19%	6.65	51	97.4%	326,800	-1.6%	350,000	0.0%	360,679	0.1%	255.1
Dec-15	196	-9%	402	17%	0.49	1,527	20%	7.79	53	97.1%	322,400	-0.7%	342,500	1.6%	352,417	1.1%	251.7
<b>2016</b>	<b>3,957</b>	<b>-13%</b>	<b>9,830</b>	<b>8%</b>	<b>0.40</b>	<b>1,884</b>	<b>25%</b>	<b>5.71</b>	<b>48</b>	<b>97.7%</b>	<b>328,000</b>	<b>-0.1%</b>	<b>343,000</b>	<b>0.3%</b>	<b>354,380</b>	<b>-0.6%</b>	<b>256.1</b>
Jan-16	175	-4%	688	-6%	0.25	1,644	11%	9.39	50	96.9%	320,300	-3.6%	335,000	1.5%	352,959	-0.5%	250.0
Feb-16	230	-5%	728	10%	0.32	1,803	15%	7.84	53	96.7%	322,500	-3.2%	323,000	-4.2%	332,342	-8.8%	251.8
Mar-16	314	-10%	840	-5%	0.37	1,891	6%	6.02	47	97.2%	321,000	-2.6%	333,950	1.2%	349,115	2.6%	250.6
Apr-16	382	-4%	953	-1%	0.40	2,014	2%	5.27	46	97.7%	324,400	-1.1%	330,800	-3.4%	343,528	-2.1%	253.2
May-16	394	-6%	973	-3%	0.40	2,137	2%	5.42	42	97.2%	326,500	-0.6%	336,200	-5.5%	354,334	-3.3%	254.9
Jun-16	393	-15%	951	-7%	0.41	2,167	2%	5.51	47	97.6%	327,100	-0.7%	336,000	-4.0%	353,599	-2.1%	255.3
Jul-16	373	-16%	792	-14%	0.47	2,102	1%	5.64	49	97.1%	325,700	-1.5%	345,000	0.0%	367,366	2.2%	254.3
Aug-16	375	14%	837	-1%	0.45	2,061	0%	5.50	50	97.1%	323,200	-1.2%	335,000	-3.9%	352,718	0.1%	252.3
Sep-16	325	-10%	789	-19%	0.41	1,938	-6%	5.96	51	97.3%	321,800	-0.3%	344,900	4.5%	353,382	6.0%	251.2
Oct-16	314	8%	769	-2%	0.41	1,858	-7%	5.92	50	97.0%	319,700	-1.8%	330,000	-4.8%	343,280	-3.2%	249.6
Nov-16	251	-11%	657	3%	0.38	1,782	-5%	7.10	49	96.9%	313,200	-4.2%	337,000	-3.7%	350,389	-2.9%	244.5
Dec-16	189	-4%	397	-1%	0.48	1,508	-1%	7.98	49	96.8%	315,100	-2.3%	335,000	-2.2%	341,071	-3.2%	246.0
<b>2017</b>	<b>3,715</b>	<b>-6%</b>	<b>9,374</b>	<b>-5%</b>	<b>0.40</b>	<b>1,909</b>	<b>1%</b>	<b>6.17</b>	<b>48</b>	<b>97.2%</b>	<b>321,708</b>	<b>-1.9%</b>	<b>335,000</b>	<b>-2.3%</b>	<b>350,464</b>	<b>-1.1%</b>	<b>251.1</b>
Jan-17	187	7%	726	6%	0.26	1,658	1%	8.87	54	96.8%	320,200	0.0%	320,000	-4.5%	341,573	-3.2%	250.0
Feb-17	227	-1%	622	-15%	0.36	1,736	-4%	7.65	54	96.7%	317,300	-1.6%	320,000	-0.9%	338,785	1.9%	247.7
Mar-17	310	-1%	854	2%	0.36	1,927	2%	6.22	48	97.1%	319,800	-0.4%	322,825	-3.3%	345,210	-1.1%	249.6
Apr-17	317	-17%	854	-10%	0.37	2,066	3%	6.52	49	97.4%	318,600	-1.8%	339,900	2.8%	361,445	5.2%	248.7
May-17	423	7%	1,039	7%	0.41	2,198	3%	5.20	48	97.1%	321,800	-1.4%	344,000	2.3%	354,289	0.0%	251.2
Jun-17	394	0%	960	1%	0.41	2,235	3%	5.67	44	97.1%	319,200	-2.4%	330,500	-1.6%	350,066	-1.0%	249.2
Jul-17	313	-16%	800	1%	0.39	2,264	8%	7.23	48	96.7%	315,600	-3.1%	325,000	-5.8%	343,068	-6.6%	246.4
Aug-17	330	-12%	812	-3%	0.41	2,228	8%	6.75	54	97.2%	317,700	-1.7%	334,200	-0.2%	338,158	-4.1%	248.0
Sep-17	261	-20%	780	-1%	0.33	2,146	11%	8.22	53	96.7%	316,300	-1.7%	322,000	-6.6%	344,198	-2.6%	246.9
Oct-17	290	-8%	721	-6%	0.40	2,009	8%	6.93	52	96.8%	312,100	-2.4%	330,000	0.0%	329,992	-3.9%	243.6
Nov-17	261	4%	587	-11%	0.44	1,895	6%	7.26	56	96.4%	309,600	-1.1%	320,000	-5.0%	341,301	-2.6%	241.7
Dec-17	204	8%	324	-18%	0.63	1,555	3%	7.62	60	96.0%	304,300	-3.4%	323,500	-3.4%	338,463	-0.8%	237.5
<b>2018</b>	<b>3,517</b>	<b>-5%</b>	<b>9,079</b>	<b>-3%</b>	<b>0.39</b>	<b>1,993</b>	<b>4%</b>	<b>6.80</b>	<b>51</b>	<b>96.9%</b>	<b>316,042</b>	<b>-1.8%</b>	<b>329,000</b>	<b>-1.8%</b>	<b>344,838</b>	<b>-1.6%</b>	<b>246.7</b>
Jan-18	202	8%	622	-14%	0.32	1,569	-5%	7.77	66	96.6%	307,700	-3.9%	330,000	3.1%	344,720	0.9%	240.2
Feb-18	210	-7%	526	-15%	0.40	1,615	-7%	7.69	57	96.4%	312,300	-1.6%	320,000	0.0%	330,549	-2.4%	243.8
Mar-18	233	-25%	671	-21%	0.35	1,722	-11%	7.39	64	96.7%	317,100	-0.8%	317,500	-1.6%	328,208	-4.9%	247.5
Apr-18	337	6%	794	-7%	0.42	1,841	-11%	5.46	52	96.8%	315,000	-1.1%	320,000	-5.9%	338,170	-6.4%	245.9
May-18	364	-14%	944	-9%	0.39	2,031	-8%	5.58	46	97.0%	318,500	-1.0%	320,000	-7.0%	332,543	-6.1%	248.6
Jun-18	351	-11%	877	-9%	0.40	2,145	-4%	6.11	47	97.0%	309,000	-3.2%	320,909	-2.9%	331,459	-5.3%	241.2
Jul-18	390	25%	712	-11%	0.55	2,080	-8%	5.33	46	97.							





SASKATOON

	Sales	Y/Y%	New Listings	Y/Y%	S/NL Ratio	Inventory	Y/Y%	Months of Supply	DOM	SP/LP	Benchmark Price	Y/Y%	Median Price	Y/Y%	Average Price	Y/Y%	Index
Jan-13	156	-13%	365	5%	0.43	662	5%	4.24	44	98.1%	339,600	6.1%	352,450	10.1%	369,339	7.7%	254.4
Feb-13	172	-25%	336	-14%	0.51	682	2%	3.97	38	98.6%	342,700	5.9%	340,500	3.8%	362,090	7.7%	256.7
Mar-13	230	-8%	428	-1%	0.54	749	6%	3.26	35	98.5%	346,400	4.9%	349,500	6.4%	366,292	4.7%	259.5
Apr-13	309	3%	510	-2%	0.61	783	1%	2.53	31	98.2%	346,300	4.4%	369,661	3.8%	384,428	4.8%	259.4
May-13	311	-10%	647	13%	0.48	902	7%	2.90	27	98.4%	349,300	5.3%	368,000	7.3%	383,910	6.2%	261.6
Jun-13	319	5%	522	-2%	0.61	902	3%	2.83	33	98.1%	347,300	3.7%	359,900	4.3%	377,038	3.2%	260.1
Jul-13	320	2%	542	12%	0.59	912	4%	2.85	33	98.0%	346,000	3.0%	355,000	4.7%	369,839	1.9%	259.2
Aug-13	266	3%	555	29%	0.48	955	10%	3.59	36	98.1%	349,100	2.8%	365,000	5.8%	375,031	2.2%	261.5
Sep-13	251	1%	546	28%	0.46	964	15%	3.84	37	97.9%	351,600	5.0%	370,000	11.6%	377,933	8.9%	263.4
Oct-13	282	18%	502	21%	0.56	916	16%	3.25	35	97.6%	346,500	2.2%	365,000	5.2%	371,866	3.1%	259.6
Nov-13	202	-3%	315	-1%	0.64	817	15%	4.04	47	97.6%	347,800	4.4%	357,750	-0.3%	375,744	3.3%	260.5
Dec-13	130	20%	225	32%	0.58	703	16%	5.41	47	97.8%	350,400	3.2%	358,500	0.0%	364,495	-1.0%	262.5
<b>2014</b>	<b>2,948</b>	<b>-1%</b>	<b>5,493</b>	<b>9%</b>	<b>0.54</b>	<b>829</b>	<b>8%</b>	<b>3.37</b>	<b>36</b>	<b>98.1%</b>	<b>346,917</b>	<b>4.2%</b>	<b>360,000</b>	<b>5.9%</b>	<b>374,397</b>	<b>4.5%</b>	<b>259.9</b>
Jan-14	149	-4%	395	8%	0.38	758	15%	5.09	50	97.7%	350,100	3.1%	369,900	5.0%	397,997	7.8%	262.2
Feb-14	200	16%	379	13%	0.53	761	12%	3.81	41	97.5%	354,000	3.3%	381,500	12.0%	383,195	5.8%	265.2
Mar-14	258	12%	528	23%	0.49	858	15%	3.33	41	98.3%	353,100	1.9%	380,950	9.0%	387,126	5.7%	264.5
Apr-14	300	-3%	593	16%	0.51	930	19%	3.10	37	97.9%	355,500	2.7%	375,000	1.4%	382,422	-0.5%	266.3
May-14	340	9%	653	1%	0.52	1,017	13%	2.99	33	97.9%	358,500	2.6%	373,950	1.6%	388,895	1.3%	268.5
Jun-14	370	16%	611	17%	0.61	1,005	11%	2.72	31	98.0%	357,600	3.0%	386,000	7.3%	397,053	5.3%	267.9
Jul-14	286	-11%	653	20%	0.44	1,069	17%	3.74	32	97.9%	360,800	4.3%	383,200	7.9%	393,345	6.4%	270.3
Aug-14	268	1%	580	5%	0.46	1,084	14%	4.04	40	97.9%	360,300	3.2%	371,950	1.9%	396,281	5.7%	269.9
Sep-14	303	21%	646	18%	0.47	1,067	11%	3.52	37	97.9%	357,200	1.6%	373,000	0.8%	384,462	1.7%	267.6
Oct-14	279	-1%	524	4%	0.53	1,003	9%	3.59	38	97.6%	359,000	3.6%	365,000	0.0%	389,706	4.8%	268.9
Nov-14	197	-2%	372	18%	0.53	941	15%	4.78	36	97.8%	362,200	4.1%	374,900	4.8%	389,053	3.5%	271.3
Dec-14	140	8%	218	-3%	0.64	743	6%	5.31	43	97.3%	352,600	0.6%	372,000	3.8%	387,861	6.4%	264.1
<b>2015</b>	<b>3,090</b>	<b>5%</b>	<b>6,152</b>	<b>12%</b>	<b>0.50</b>	<b>936</b>	<b>13%</b>	<b>3.64</b>	<b>37</b>	<b>97.8%</b>	<b>356,742</b>	<b>2.8%</b>	<b>375,000</b>	<b>4.2%</b>	<b>389,820</b>	<b>4.1%</b>	<b>267.2</b>
Jan-15	125	-16%	451	14%	0.28	856	13%	6.85	51	97.7%	361,900	3.4%	376,596	1.8%	387,253	-2.7%	271.1
Feb-15	161	-20%	415	9%	0.39	887	17%	5.51	42	97.8%	362,500	2.4%	385,000	0.9%	408,469	6.6%	271.5
Mar-15	240	-7%	574	9%	0.42	1,011	18%	4.21	44	97.9%	358,500	1.5%	357,950	-6.0%	373,998	-3.4%	268.5
Apr-15	271	-10%	654	10%	0.41	1,140	23%	4.21	39	98.0%	357,400	0.5%	375,000	0.0%	382,730	0.1%	267.7
May-15	280	-18%	657	1%	0.43	1,225	20%	4.28	41	98.0%	357,300	-0.3%	395,500	5.8%	403,213	3.7%	267.6
Jun-15	332	-10%	707	16%	0.47	1,278	27%	3.85	38	98.0%	358,400	0.2%	372,500	-3.5%	386,377	-2.7%	268.5
Jul-15	298	4%	582	-11%	0.51	1,241	16%	4.16	43	97.5%	359,900	-0.2%	372,500	-2.8%	403,005	2.5%	269.6
Aug-15	219	-18%	577	-1%	0.38	1,246	15%	5.69	47	97.5%	355,500	-1.3%	381,000	2.4%	393,096	-0.8%	266.3
Sep-15	266	-12%	657	2%	0.40	1,209	13%	4.55	38	97.3%	351,100	-1.7%	353,750	-5.2%	361,851	-5.9%	263.0
Oct-15	202	-28%	512	-2%	0.39	1,180	18%	5.84	42	97.5%	355,100	-1.1%	385,000	5.5%	386,515	-0.8%	266.0
Nov-15	219	11%	390	5%	0.56	1,057	12%	4.83	46	97.5%	356,600	-1.5%	374,900	0.0%	380,090	-2.3%	267.1
Dec-15	138	-1%	258	18%	0.53	859	16%	6.22	52	97.2%	350,200	-0.7%	371,250	-0.2%	386,806	-0.3%	262.3
<b>2016</b>	<b>2,751</b>	<b>-11%</b>	<b>6,434</b>	<b>5%</b>	<b>0.43</b>	<b>1,099</b>	<b>17%</b>	<b>4.79</b>	<b>43</b>	<b>97.7%</b>	<b>357,033</b>	<b>0.1%</b>	<b>375,000</b>	<b>0.0%</b>	<b>387,480</b>	<b>-0.6%</b>	<b>267.4</b>
Jan-16	125	0%	407	-10%	0.31	905	6%	7.24	44	97.0%	349,800	-3.3%	373,500	-0.8%	387,646	0.1%	262.0
Feb-16	153	-5%	429	3%	0.36	975	10%	6.37	53	96.5%	352,400	-2.8%	355,000	-7.8%	372,416	-8.8%	264.0
Mar-16	226	-6%	550	-4%	0.41	1,011	0%	4.47	47	97.3%	349,300	-2.6%	365,000	2.0%	381,506	2.0%	261.6
Apr-16	273	1%	613	-6%	0.45	1,112	-2%	4.07	40	97.9%	353,700	-1.0%	359,900	-4.0%	377,672	-1.3%	264.9
May-16	273	-3%	636	-3%	0.43	1,223	0%	4.48	32	97.4%	356,500	-0.2%	370,000	-6.4%	387,669	-3.9%	267.0
Jun-16	281	-15%	592	-16%	0.47	1,216	-5%	4.33	42	97.7%	357,400	-0.3%	367,000	-1.5%	386,557	0.0%	267.7
Jul-16	262	-12%	505	-13%	0.52	1,168	-6%	4.46	42	97.1%	355,000	-1.4%	383,950	3.1%	404,801	0.4%	265.9
Aug-16	250	14%	558	-3%	0.45	1,177	-6%	4.71	45	97.3%	352,500	-0.8%	375,750	-1.4%	386,538	-1.7%	264.0
Sep-16	238	-11%	525	-20%	0.45	1,097	-9%	4.61	43	97.3%	351,200	0.0%	360,121	1.8%	387,557	7.1%	263.1
Oct-16	217	7%	513	0%	0.42	1,061	-10%	4.89	41	97.1%	349,500	-1.6%	368,000	-4.4%	384,194	-0.6%	261.8
Nov-16	175	-20%	395	1%	0.44	1,000	-5%	5.41	43	96.9%	342,000	-4.1%	365,000	-2.6%	388,153	2.1%	256.2
Dec-16	131	-5%	246	-5%	0.53	844	-2%	6.44	44	96.6%	344,800	-1.5%	345,000	-7.1%	360,324	-6.8%	258.3
<b>2017</b>	<b>2,604</b>	<b>-5%</b>	<b>5,969</b>	<b>-7%</b>	<b>0.44</b>	<b>1,066</b>	<b>-3%</b>	<b>4.91</b>	<b>43</b>	<b>97.2%</b>	<b>351,175</b>	<b>-1.6%</b>	<b>368,000</b>	<b>-1.9%</b>	<b>385,041</b>	<b>-0.6%</b>	<b>263.0</b>
Jan-17	135	8%	446	10%	0.30	915	1%	6.78	46	97.1%	351,200	0.4%	340,000	-9.0%	366,972	-5.3%	263.1
Feb-17	160	5%	396	-8%	0.40	949	-3%	5.93	53	96.6%	346,900	-1.6%	359,250	1.2%	373,207	0.2%	259.9
Mar-17	195	-14%	562	2%	0.35	1,094	8%	5.61	39	97.2%	349,900	0.2%	375,000	2.7%	393,040	3.0%	262.1
Apr-17	218	-20%	548	-11%	0.40	1,148	3%	5.27	43	97.8%	347,800	-1.7%	367,750	2.2%	394,731	4.5%	260.5
May-17	296	8%	706	11%	0.42	1,266	4%	4.28	43	97.4%	352,000	-1.3%	370,000	0.0%	389,928	0.6%	263.7
Jun-17	285	1%	619	5%	0.46	1,290	6%	4.53	37	97.3%	348,700	-2.4%	360,000	-1.9%	381,106	-1.4%	261.2
Jul-17	224	-15%	553	10%	0.41	1,321	13%	5.90	41	96.8%	344,500	-3.0%	367,000	-4.4%	380,183	-6.1%	258.1
Aug-17	225	-10%	553	-1%	0.41	1,315	12%	5.84	45	97.5%	347,400	-1.4%	365,000	-2.9%	375,842	-2.8%	260.2
Sep-17	182	-24%	537	2%	0.34	1,308	19%	7.19	45	97.0%	345,100	-1.7%	364,500	1.2%	385,248	-0.6%	258.5
Oct-17	213	-2%	471	-8%	0.45	1,202	13%	5.64	47	97.0%	340,200	-2.7%	353,500	-3.9%	357,466	-7.0%	254.8
Nov-17	196	12%	384	-3%	0.51	1,105	11%	5.64	52	96.6%	339,100	-0.8%	356,250	-2.4%	373,329	-3.8%	254.0
Dec-17	144	10%	190	-23%	0.76	887	5%	6.16	58	96.2%	332,100	-3.7%	364,950	5.8%	377,163	4.7%	248.8
<b>2018</b>	<b>2,473</b>	<b>-5%</b>	<b>5,965</b>	<b>0%</b>	<b>0.41</b>	<b>1,150</b>	<b>8%</b>	<b>5.58</b>	<b>45</b>	<b>97.1%</b>	<b>345,408</b>	<b>-1.6%</b>	<b>363,500</b>	<b>-1.2%</b>	<b>379,882</b>	<b>-1.3%</b>	<b>258.7</b>
Jan-18	151	12%	340	-24%	0.44	855	-7%	5.66	61	96.9%	337,700	-3.8%	352,000	3.5%	369,031	0.6%	253.0
Feb-18	140	-13%	336	-15%	0.42	894	-6%	6.39	53	96.6%	343,800	-0.9%	350,000	-2.6%	367,727	-1.5%	257.5
Mar-18	162	-17%	418	-26%	0.39	956	-13%	5.90	53	96.9%	349,000	-0.3%	353,950	-5.6%	371,204	-5.6%	261.4
Apr-18	254	17%	474	-14%	0.54	994	-13%	3.91	50	97.0%	345,800	-0.6%	340,500	-7.4%	365,878	-7.3%	259.0
May-18	257	-13%	589	-17%	0.44	1,114	-12%	4.33	39	97.3%	350,100	-0.5%	357,400	-3.4%	370,723	-4.9%	262.2
Jun-18	235	-18%	551	-11%	0.43	1,201	-7%	5.11	40	97.2%	337,900	-3.1%	363,000	0.8%	373,868	-1.9%	253.1
Jul-18	261	17%	470	-15%	0.56	1,178	-11%	4.51	45	97.1%	345,800	0.4%	357,000	-2.7%	384,427		



