

The City of Saskatoon reported 457 sales in August, a 13 per cent year-over-year decrease. Despite the slight sales dip, August sales levels were 14 per cent above the 10-year average.

Limited supply options continue to prevent stronger sales figures in Saskatoon, as inventory levels remain over 48 per cent below long-term trends. While a monthly gain in new listings did support modest inventory relief, Saskatoon continues to report the tightest market conditions in the province.

Tight market conditions continue to place upward pressure on home prices as the City of Saskatoon reported a record benchmark price of \$404,900 in August, a year-over-year increase of over eight per cent.

**SALES**  
**457**

↓ 13.1% Y/Y | ↑ 5.0% YTD  
VS. 10-YEAR AVERAGE  
↑ 14.0% | ↑ 18.8% YTD

**NEW LISTINGS**  
**719**

↑ 9.4% Y/Y | ↓ 1.0% YTD  
VS. 10-YEAR AVERAGE  
↓ 5.3% | ↓ 18.3% YTD

**INVENTORY**  
**914**

↓ 13.1% Y/Y | Monthly trend\*  
VS. 10-YEAR AVERAGE  
↓ 47.5% | ↓ 48.5% YTD

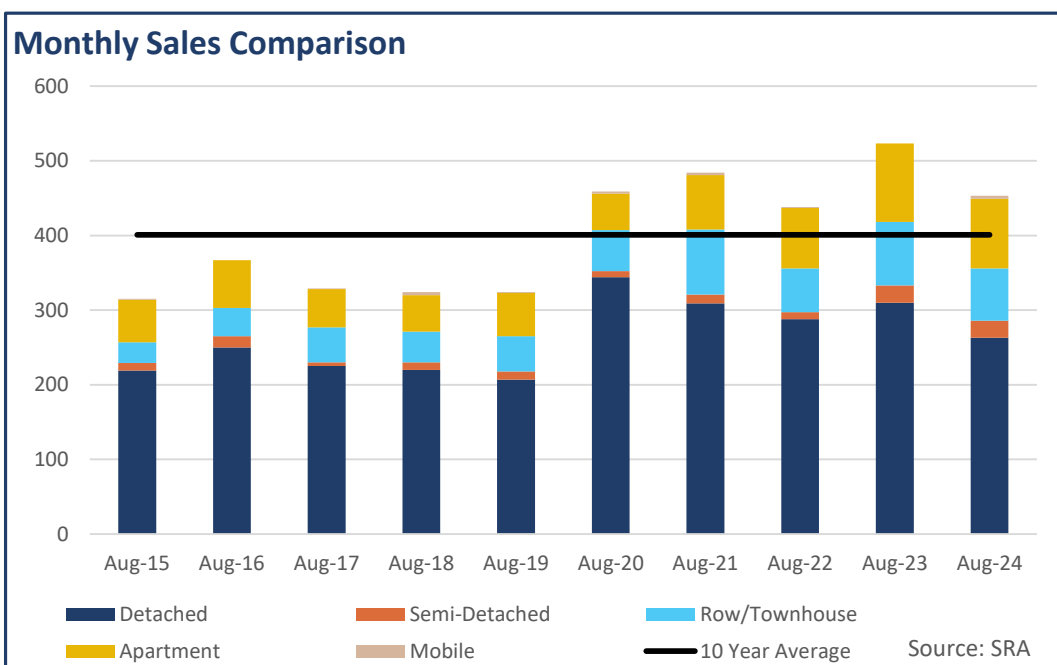
**MONTHS OF SUPPLY**  
**2.00**

0.0% Y/Y | Monthly trend\*  
VS. 10-YEAR AVERAGE  
↓ 56.7% | ↓ 58.7% YTD

## TOTAL RESIDENTIAL BENCHMARK PRICE

**\$ 404,900** | **↑ 8.4%** Y/Y

Monthly trend\*





# SASKATOON - AUGUST 2024

## August 2024

	Sales		New Listings		Inventory		Months of Supply		DOM	Benchmark		Avg Price	
	Actual	Y/Y%	Actual	Y/Y%	Actual	Y/Y%	Actual	Y/Y%	Actual	Actual	Y/Y%	Actual	Y/Y%
Detached	263	-15%	464	12%	588	-14%	2.24	2%	28	\$463,400	10%	\$466,448	6%
Semi-Detached	23	0%	29	-9%	48	-8%	2.09	-8%	44	\$499,800	9%	\$396,652	2%
Row/Townhouse	70	-18%	93	11%	99	-13%	1.41	5%	27	\$334,500	10%	\$318,860	4%
Apartment	93	-11%	120	0%	164	-15%	1.76	-4%	27	\$242,900	14%	\$233,104	5%
Acreage	0	-	0	-100%	0	-100%	-	-	-	-	-	-	-
Mobile	4	-	6	-	7	600%	1.75	-	22	-	-	\$68,850	-
Mutli-Family	4	33%	7	75%	8	-11%	2.00	-33%	43	-	-	\$503,100	1%
<b>Total Residential</b>	<b>457</b>	<b>-13%</b>	<b>719</b>	<b>9%</b>	<b>914</b>	<b>-13%</b>	<b>2.00</b>	<b>0%</b>	<b>28</b>	<b>\$404,900</b>	<b>8%</b>	<b>\$389,684</b>	<b>5%</b>

## 10-Year Averages

	Sales		New Listings		Inventory		Months of Supply		DOM	Benchmark		Avg Price	
	Avg	%Diff	Avg	%Diff	Avg	%Diff	Avg	%Diff	Avg	Avg	%Diff	Avg	%Diff
Total Residential	401	14%	759	-5%	1,740	-47%	4.62	-57%	46	\$333,800	21%	\$351,391	11%

## Year-to-Date

### August 2024

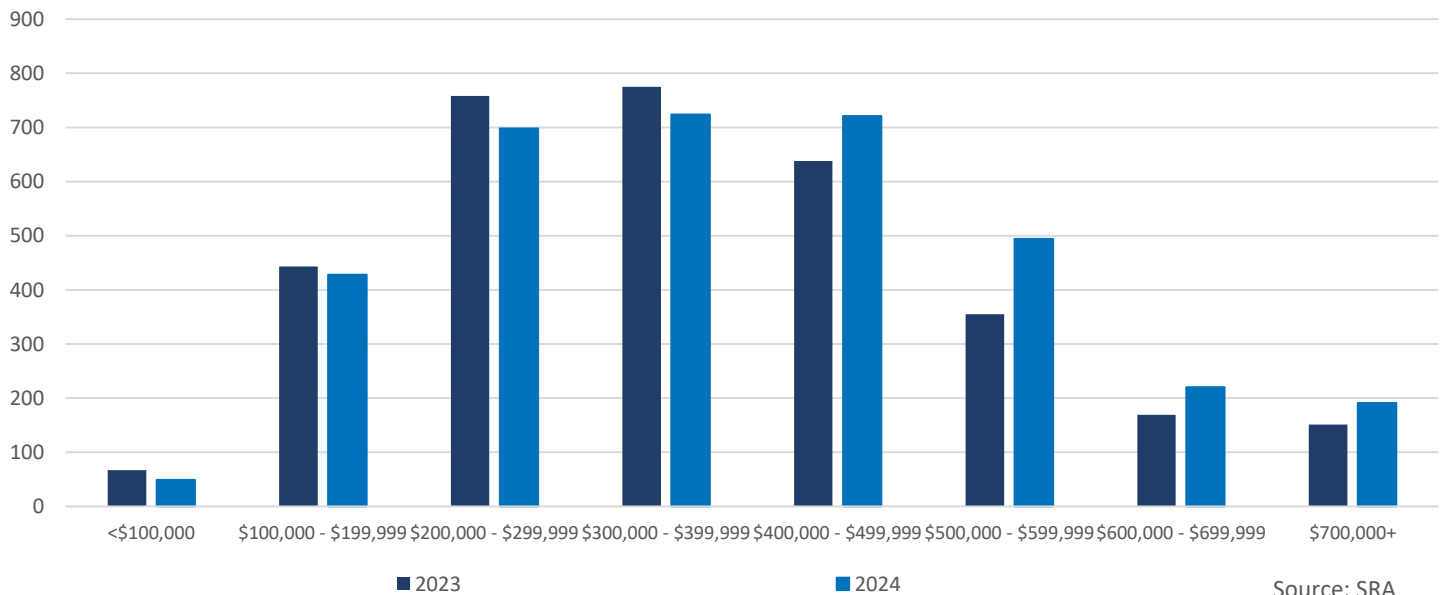
	Sales		New Listings		Inventory		Months of Supply		DOM	Benchmark		Avg Price	
	Actual	Y/Y%	Actual	Y/Y%	Actual	Y/Y%	Actual	Y/Y%	Actual	Actual	Y/Y%	Actual	Y/Y%
Detached	2,061	3%	3,049	-2%	522	-18%	2.03	-20%	34	\$450,125	7%	\$470,868	5%
Semi-Detached	173	26%	213	-4%	49	-1%	2.25	-21%	45	\$485,213	5%	\$415,699	8%
Row/Townhouse	551	5%	673	-2%	86	-33%	1.25	-37%	27	\$323,813	11%	\$318,616	7%
Apartment	695	6%	952	3%	164	-25%	1.88	-29%	33	\$232,300	11%	\$230,669	6%
Acreage	1	-	1	-50%	0	-50%	2.00	-	63	-	-	\$1,135,000	-
Mobile	16	23%	22	57%	5	3%	2.50	-17%	36	-	-	\$74,744	-30%
Mutli-Family	28	0%	45	15%	8	-9%	2.21	-9%	36	-	-	\$488,907	8%
<b>Total Residential</b>	<b>3,525</b>	<b>5%</b>	<b>4,955</b>	<b>-1%</b>	<b>833</b>	<b>-20%</b>	<b>1.89</b>	<b>-24%</b>	<b>33</b>	<b>\$394,488</b>	<b>6%</b>	<b>\$395,537</b>	<b>5%</b>

## 10-Year Averages

	Sales		New Listings		Inventory		Months of Supply		DOM	Benchmark		Avg Price	
	Avg	%Diff	Avg	%Diff	Avg	%Diff	Avg	%Diff	Avg	Avg	%Diff	Avg	%Diff
Total Residential	2,967	19%	6,068	-18%	1,617	-48%	4.57	-59%	45	\$332,035	19%	\$353,281	12%

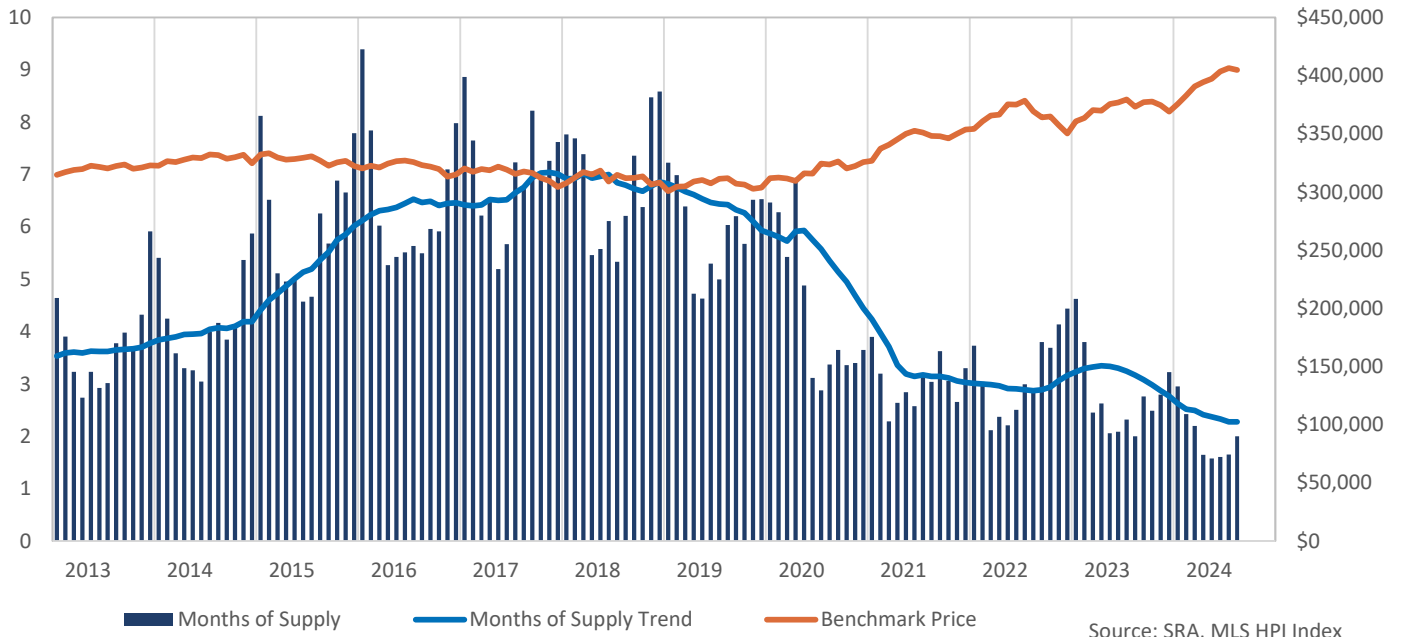
## Residential Sales by Price Range

YTD-AUG

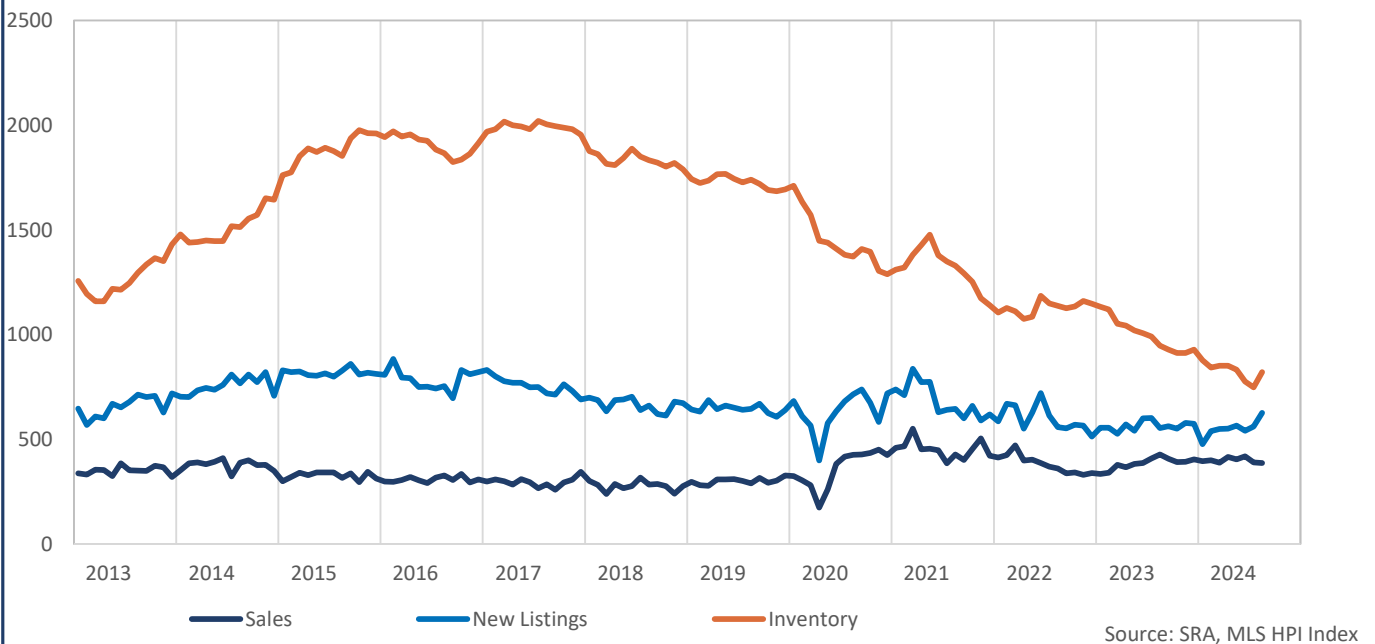




### Residential Months of Supply and Price

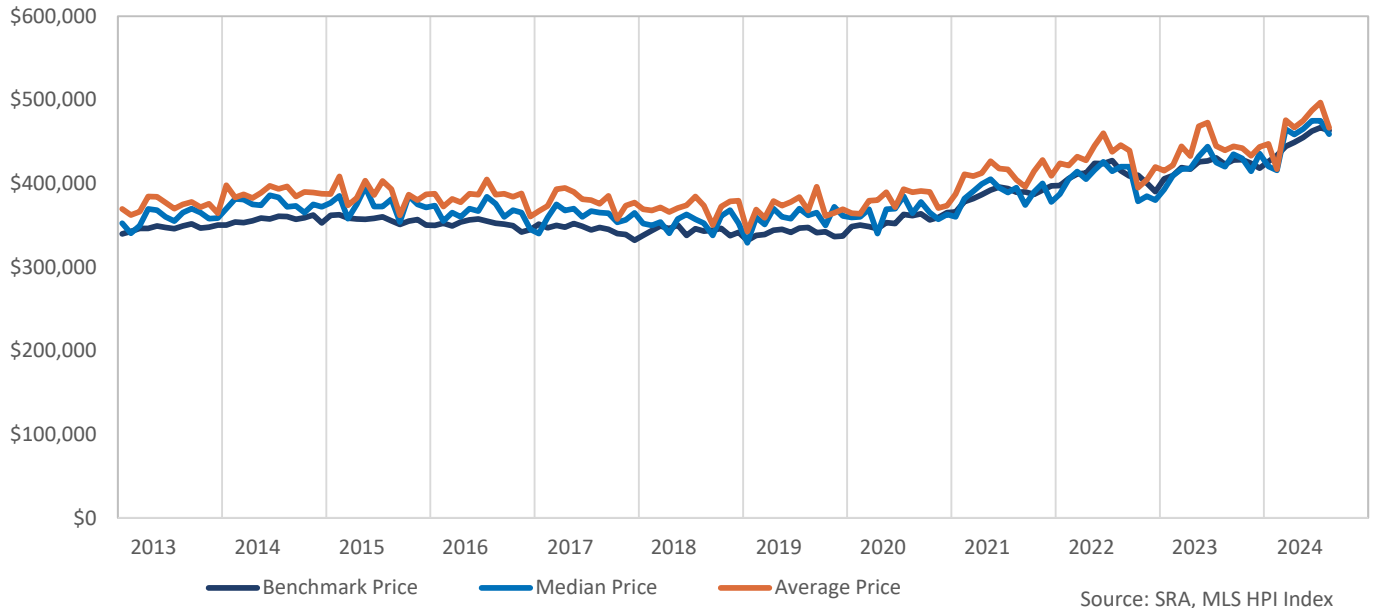


### Residential Stats - Seasonally Adjusted

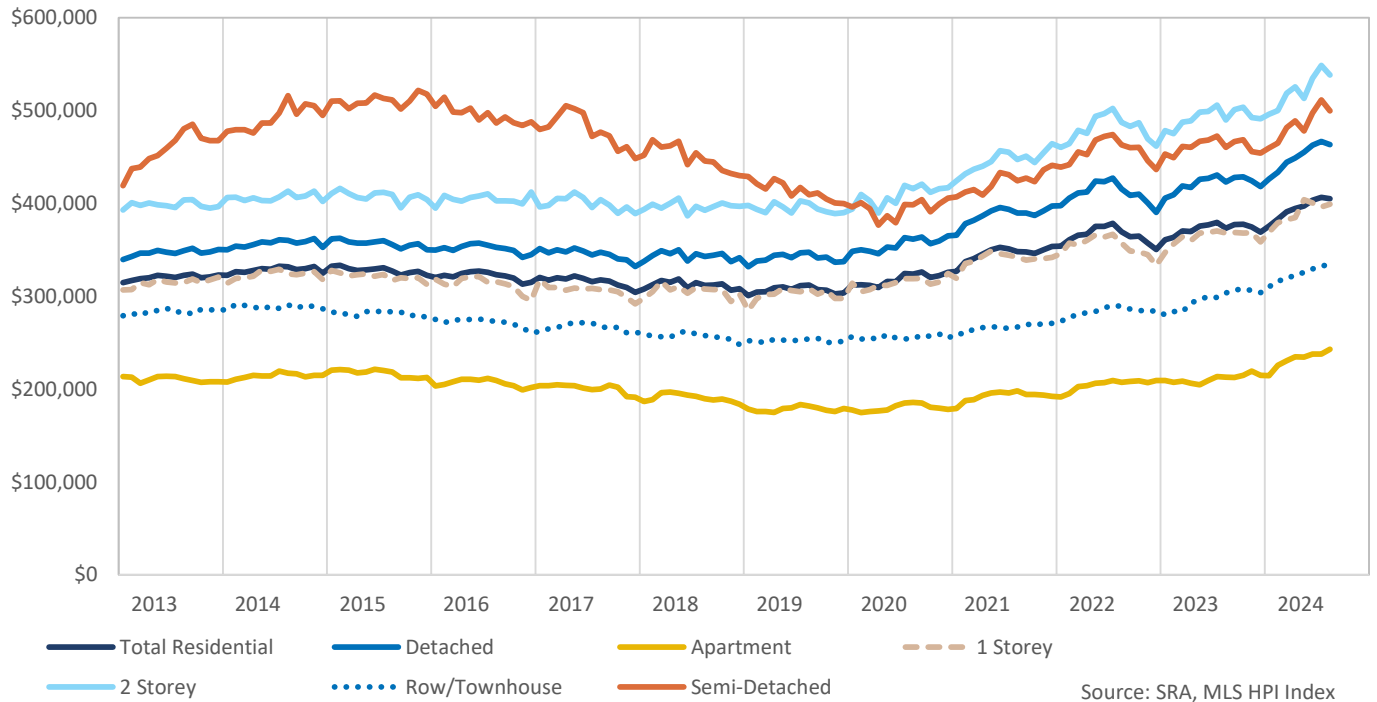




### Detached Pricing



### Benchmark Price





## HPI Benchmark Attributes

	Composite
Bedrooms, Above Ground	3
Bathrooms, Full	2
Bathrooms, Half	0
Garage	Attached, Single width
Gross Living Area, Above Ground (Sq. Ft.)	1167
Lot Size	-
Fireplaces, Number of	0
Year Built	1988
August 2024 Benchmark Price	\$404,900
Detached Share of Sales, Last 3 Years	61%
Semi-Detached Share of Sales, Last 3 Years	2%
Apartment Share of Sales, Last 3 Years	18%
Townhouse Share of Sales, Last 3 Years	15%

	Detached	1 Storey	2 Storey
Bedrooms, Above Ground	3	3	3
Bathrooms, Full	2	2	2
Bathrooms, Half	0	0	1
Garage	Attached, Double width	Attached, Single width	Attached, Double width
Gross Living Area, Above Ground (Sq. Ft.)	1243	1102	1495
Lot Size	5657	5865	5231
Fireplaces, Number of	0	0	0
Year Built	1979	1971	2007
August 2024 Benchmark Price	\$463,400	\$399,200	\$538,200
Share of Total Sales, Last 3 Years	61%	36%	31%

	Semi-Detached	Row/Townhouse	Apartment
Bedrooms, Above Ground	3	3	2
Bathrooms, Full	2	1	1
Bathrooms, Half	1	1	0
Garage	Attached, Single width	Attached, Single width	-
Gross Living Area, Above Ground (Sq. Ft.)	1155	1106	927
Fireplaces, Number of	0	0	0
Year Built	2013	2010	1993
August 2024 Benchmark Price	\$499,800	\$334,500	\$242,900
Share of Total Sales, Last 3 Years	2%	15%	18%

SASKATOON

	Sales	Y/Y%	New Listings	Y/Y%	S/NL Ratio	Inventory	Y/Y%	Months of Supply	DOM	SP/PLP	Benchmark Price	Y/Y%	Median Price	Y/Y%	Average Price	Y/Y%	Index
Jan-13	223	-10%	579	12%	0.39	1,035	4%	4.64	45	98.2%	314,800	5.8%	325,000	5.5%	337,625	5.7%	245.7
Feb-13	267	-18%	479	-16%	0.56	1,043	0%	3.91	39	98.7%	317,100	5.7%	308,500	-0.5%	329,711	5.6%	247.5
Mar-13	346	-5%	617	-5%	0.56	1,118	0%	3.23	37	98.4%	318,800	4.4%	318,750	2.8%	334,868	0.6%	248.9
Apr-13	432	5%	758	3%	0.57	1,182	-2%	2.74	34	98.1%	319,800	4.2%	339,950	0.9%	357,725	4.2%	249.6
May-13	427	-8%	906	12%	0.47	1,379	4%	3.23	30	98.3%	322,600	4.9%	339,900	7.9%	356,616	5.9%	251.8
Jun-13	472	7%	760	4%	0.62	1,380	5%	2.92	40	98.3%	321,500	3.6%	328,200	4.2%	351,157	5.0%	251.0
Jul-13	465	5%	795	11%	0.58	1,403	5%	3.02	35	98.1%	320,200	3.0%	324,900	3.1%	341,838	2.5%	250.0
Aug-13	381	0%	750	21%	0.51	1,440	9%	3.78	39	98.1%	322,400	2.9%	337,000	3.7%	343,148	0.9%	251.7
Sep-13	360	8%	749	28%	0.48	1,433	13%	3.98	39	97.9%	323,700	4.6%	327,000	5.5%	343,111	5.0%	252.7
Oct-13	378	12%	709	18%	0.53	1,389	15%	3.67	37	97.7%	320,000	2.1%	338,950	6.1%	345,026	2.8%	249.8
Nov-13	294	5%	473	5%	0.62	1,271	15%	4.32	52	97.3%	320,900	4.0%	319,920	-5.2%	344,763	-0.6%	250.5
Dec-13	186	2%	334	33%	0.56	1,100	21%	5.91	48	97.8%	322,800	2.8%	330,450	3.3%	343,202	1.5%	252.0
<b>2014</b>	<b>4,231</b>	<b>0%</b>	<b>7,909</b>	<b>9%</b>	<b>0.53</b>	<b>1,264</b>	<b>7%</b>	<b>3.59</b>	<b>39</b>	<b>98.1%</b>	<b>320,383</b>	<b>4.0%</b>	<b>329,500</b>	<b>3.9%</b>	<b>345,208</b>	<b>3.4%</b>	<b>250.1</b>
Jan-14	228	2%	639	10%	0.36	1,233	19%	5.41	51	97.7%	322,600	2.5%	331,250	1.9%	354,497	5.0%	251.8
Feb-14	299	12%	578	21%	0.52	1,270	22%	4.25	43	97.8%	326,400	2.9%	337,400	9.4%	350,692	6.4%	254.8
Mar-14	386	12%	772	25%	0.50	1,385	24%	3.59	44	98.2%	325,800	2.2%	349,900	9.8%	353,242	5.5%	254.3
Apr-14	455	5%	886	17%	0.51	1,501	27%	3.30	41	98.1%	327,800	2.5%	341,000	0.3%	353,550	-1.2%	255.9
May-14	498	17%	954	5%	0.52	1,623	18%	3.26	36	97.7%	329,700	2.2%	336,800	-0.9%	355,677	-0.3%	257.4
Jun-14	533	13%	917	21%	0.58	1,625	18%	3.05	33	97.9%	329,100	2.4%	350,000	6.6%	360,974	2.8%	256.9
Jul-14	424	-9%	945	19%	0.45	1,695	21%	4.00	37	97.9%	332,300	3.8%	351,500	8.2%	364,439	6.6%	259.4
Aug-14	403	6%	779	4%	0.52	1,679	17%	4.17	42	97.8%	331,800	2.9%	335,000	-0.6%	352,862	2.8%	259.0
Sep-14	431	20%	910	21%	0.47	1,658	16%	3.85	40	97.8%	328,700	1.5%	342,000	4.6%	355,084	3.5%	256.6
Oct-14	385	2%	776	9%	0.50	1,593	15%	4.14	44	97.7%	329,900	3.1%	345,000	1.8%	361,381	4.7%	257.5
Nov-14	292	-1%	611	29%	0.48	1,568	23%	5.37	40	97.6%	332,100	3.5%	349,900	9.4%	360,187	4.5%	259.3
Dec-14	216	16%	345	3%	0.63	1,269	15%	5.88	48	97.6%	324,700	0.6%	337,000	2.0%	348,453	1.6%	253.5
<b>2015</b>	<b>4,550</b>	<b>8%</b>	<b>9,112</b>	<b>15%</b>	<b>0.50</b>	<b>1,508</b>	<b>19%</b>	<b>3.98</b>	<b>40</b>	<b>97.8%</b>	<b>328,408</b>	<b>2.5%</b>	<b>342,000</b>	<b>3.8%</b>	<b>356,436</b>	<b>3.3%</b>	<b>256.4</b>
Jan-15	183	-20%	731	14%	0.25	1,486	21%	8.12	55	98.0%	332,300	3.0%	330,000	-0.4%	354,724	0.1%	259.4
Feb-15	241	-19%	659	14%	0.37	1,571	24%	6.52	49	97.9%	333,200	2.1%	338,000	0.2%	364,554	4.0%	260.1
Mar-15	349	-10%	888	15%	0.39	1,785	29%	5.11	50	97.9%	329,600	1.2%	330,000	-5.7%	340,420	-3.6%	257.3
Apr-15	397	-13%	961	8%	0.41	1,968	31%	4.96	45	98.0%	327,900	0.0%	342,500	0.4%	350,853	-0.8%	256.0
May-15	419	-16%	1,001	5%	0.42	2,087	29%	4.98	44	98.0%	328,400	-0.4%	355,800	5.6%	366,474	3.0%	256.4
Jun-15	464	-13%	1,022	11%	0.45	2,121	31%	4.57	42	97.9%	329,500	0.1%	350,000	0.0%	361,328	0.1%	257.2
Jul-15	446	5%	925	-2%	0.48	2,082	23%	4.67	48	97.4%	330,700	-0.5%	345,000	-1.8%	359,395	-1.4%	258.2
Aug-15	328	-19%	847	9%	0.39	2,053	22%	6.26	50	97.4%	327,000	-1.4%	348,425	4.0%	352,239	-0.2%	255.3
Sep-15	362	-16%	973	7%	0.37	2,056	24%	5.68	44	97.3%	322,700	-1.8%	330,000	-3.5%	333,524	-6.1%	251.9
Oct-15	291	-24%	782	1%	0.37	2,004	26%	6.89	50	97.4%	325,500	-1.3%	346,500	0.4%	354,713	-1.8%	254.1
Nov-15	281	-4%	639	5%	0.44	1,870	19%	6.65	51	97.4%	326,800	-1.6%	350,000	0.0%	360,679	0.1%	255.1
Dec-15	196	-9%	402	17%	0.49	1,527	20%	7.79	53	97.1%	322,400	-0.7%	342,500	1.6%	352,417	1.1%	251.7
<b>2016</b>	<b>3,957</b>	<b>-13%</b>	<b>9,830</b>	<b>8%</b>	<b>0.40</b>	<b>1,884</b>	<b>25%</b>	<b>5.71</b>	<b>48</b>	<b>97.7%</b>	<b>328,000</b>	<b>-0.1%</b>	<b>343,000</b>	<b>0.3%</b>	<b>354,380</b>	<b>-0.6%</b>	<b>256.1</b>
Jan-16	175	-4%	688	-6%	0.25	1,644	11%	9.39	50	96.9%	320,300	-3.6%	335,000	1.5%	352,959	-0.5%	250.0
Feb-16	230	-5%	728	10%	0.32	1,803	15%	7.84	53	96.7%	322,500	-3.2%	323,000	-4.2%	332,342	-8.8%	251.8
Mar-16	314	-10%	840	-5%	0.37	1,891	6%	6.02	47	97.2%	321,000	-2.6%	333,950	1.2%	349,115	2.6%	250.6
Apr-16	382	-4%	953	-1%	0.40	2,014	2%	5.27	46	97.7%	324,400	-1.1%	330,800	-3.4%	343,528	-2.1%	253.2
May-16	394	-6%	973	-3%	0.40	2,137	2%	5.42	42	97.2%	326,500	-0.6%	336,200	-5.5%	354,334	-3.3%	254.9
Jun-16	393	-15%	951	-7%	0.41	2,167	2%	5.51	47	97.6%	327,100	-0.7%	336,000	-4.0%	353,599	-2.1%	255.3
Jul-16	373	-16%	792	-14%	0.47	2,102	1%	5.64	49	97.1%	325,700	-1.5%	345,000	0.0%	367,366	2.2%	254.3
Aug-16	375	14%	837	-1%	0.45	2,061	0%	5.50	50	97.1%	323,200	-1.2%	335,000	-3.9%	352,718	0.1%	252.3
Sep-16	325	-10%	789	-19%	0.41	1,938	-6%	5.96	51	97.3%	321,800	-0.3%	344,900	4.5%	353,382	6.0%	251.2
Oct-16	314	8%	769	-2%	0.41	1,858	-7%	5.92	50	97.0%	319,700	-1.8%	330,000	-4.8%	343,280	-3.2%	249.6
Nov-16	251	-11%	657	3%	0.38	1,782	-5%	7.10	49	96.9%	313,200	-4.2%	337,000	-3.7%	350,389	-2.9%	244.5
Dec-16	189	-4%	397	-1%	0.48	1,508	-1%	7.98	49	96.8%	315,100	-2.3%	335,000	-2.2%	341,071	-3.2%	246.0
<b>2017</b>	<b>3,715</b>	<b>-6%</b>	<b>9,374</b>	<b>-5%</b>	<b>0.40</b>	<b>1,909</b>	<b>1%</b>	<b>6.17</b>	<b>48</b>	<b>97.2%</b>	<b>321,708</b>	<b>-1.9%</b>	<b>335,000</b>	<b>-2.3%</b>	<b>350,464</b>	<b>-1.1%</b>	<b>251.1</b>
Jan-17	187	7%	726	6%	0.26	1,658	1%	8.87	54	96.8%	320,200	0.0%	320,000	-4.5%	341,573	-3.2%	250.0
Feb-17	227	-1%	622	-15%	0.36	1,736	-4%	7.65	54	96.7%	317,300	-1.6%	320,000	-0.9%	338,785	1.9%	247.7
Mar-17	310	-1%	854	2%	0.36	1,927	2%	6.22	48	97.1%	319,800	-0.4%	322,825	-3.3%	345,210	-1.1%	249.6
Apr-17	317	-17%	854	-10%	0.37	2,066	3%	6.52	49	97.4%	318,600	-1.8%	339,900	2.8%	361,445	5.2%	248.7
May-17	423	7%	1,039	7%	0.41	2,198	3%	5.20	48	97.1%	321,800	-1.4%	344,000	2.3%	354,289	0.0%	251.2
Jun-17	394	0%	960	1%	0.41	2,235	3%	5.67	44	97.1%	319,200	-2.4%	330,500	-1.6%	350,066	-1.0%	249.2
Jul-17	313	-16%	800	1%	0.39	2,264	8%	7.23	48	96.7%	315,600	-3.1%	325,000	-5.8%	343,068	-6.6%	246.4
Aug-17	330	-12%	812	-3%	0.41	2,228	8%	6.75	54	97.2%	317,700	-1.7%	334,200	-0.2%	338,158	-4.1%	248.0
Sep-17	261	-20%	780	-1%	0.33	2,146	11%	8.22	53	96.7%	316,300	-1.7%	322,000	-6.6%	344,198	-2.6%	246.9
Oct-17	290	-8%	721	-6%	0.40	2,009	8%	6.93	52	96.8%	312,100	-2.4%	330,000	0.0%	329,992	-3.9%	243.6
Nov-17	261	4%	587	-11%	0.44	1,895	6%	7.26	56	96.4%	309,600	-1.1%	320,000	-5.0%	341,301	-2.6%	241.7
Dec-17	204	8%	324	-18%	0.63	1,555	3%	7.62	60	96.0%	304,300	-3.4%	323,500	-3.4%	338,463	-0.8%	237.5
<b>2018</b>	<b>3,517</b>	<b>-5%</b>	<b>9,079</b>	<b>-3%</b>	<b>0.39</b>	<b>1,993</b>	<b>4%</b>	<b>6.80</b>	<b>51</b>	<b>96.9%</b>	<b>316,042</b>	<b>-1.8%</b>	<b>329,000</b>	<b>-1.8%</b>	<b>344,838</b>	<b>-1.6%</b>	<b>246.7</b>
Jan-18	202	8%	622	-14%	0.32	1,569	-5%	7.77	66	96.6%	307,700	-3.9%	330,000	3.1%	344,720	0.9%	240.2
Feb-18	210	-7%	526	-15%	0.40	1,615	-7%	7.69	57	96.4%	312,300	-1.6%	320,000	0.0%	330,549	-2.4%	243.8
Mar-18	233	-25%	671	-21%	0.35	1,722	-11%	7.39	64	96.7%	317,100	-0.8%	317,500	-1.6%	328,208	-4.9%	247.5
Apr-18	337	6%	794	-7%	0.42	1,841	-11%	5.46	52	96.8%	315,000	-1.1%	320,000	-5.9%	338,170	-6.4%	245.9
May-18	364	-14%	944	-9%	0.39	2,031	-8%	5.58	46	97.0%	318,500	-1.0%	320,000	-7.0%	332,543	-6.1%	248.6
Jun-18	351	-11%	877	-9%	0.40	2,145	-4%	6.11	47	97.0%	309,000	-3.2%	320,909	-2.9%	331,459	-5.3%	241.2
Jul-18	390	25%	712	-11%	0.55	2,080	-8%	5.33	46	97.							

SASKATOON

	Sales	Y/Y%	New Listings	Y/Y%	S/NL Ratio	Inventory	Y/Y%	Months of Supply	DOM	SP/PLP	Benchmark Price	Y/Y%	Median Price	Y/Y%	Average Price	Y/Y%	Index
Jan-19	201	0%	556	-11%	0.36	1,452	-7%	7.22	60	95.8%	300,700	-2.3%	285,000	-13.6%	301,368	-12.6%	234.7
Feb-19	211	0%	481	-9%	0.44	1,475	-9%	6.99	56	97.0%	304,500	-2.5%	321,900	0.6%	338,268	2.3%	237.7
Mar-19	257	10%	703	5%	0.37	1,643	-5%	6.39	57	96.7%	304,800	-3.9%	317,000	-0.2%	316,737	-3.5%	237.9
Apr-19	378	12%	777	-2%	0.49	1,786	-3%	4.72	56	97.0%	309,000	-1.9%	332,000	3.8%	342,842	1.4%	241.2
May-19	421	16%	916	-3%	0.46	1,949	-4%	4.63	47	97.2%	310,200	-2.6%	326,000	1.9%	334,016	0.4%	242.2
Jun-19	375	7%	789	-10%	0.48	1,987	-7%	5.30	49	96.7%	307,500	-0.5%	320,000	-0.3%	338,142	2.0%	240.0
Jul-19	390	0%	752	6%	0.52	1,948	-6%	4.99	52	96.8%	311,400	-1.0%	316,000	-2.8%	331,757	-1.8%	243.1
Aug-19	325	-2%	727	-4%	0.45	1,961	-4%	6.03	56	96.8%	311,900	0.0%	309,000	-2.4%	323,110	-2.5%	243.5
Sep-19	307	13%	720	11%	0.43	1,904	-5%	6.20	55	96.6%	307,200	-1.6%	329,900	4.7%	350,946	9.8%	239.8
Oct-19	304	6%	599	1%	0.51	1,725	-5%	5.67	53	97.0%	306,500	-2.2%	302,500	-4.4%	318,022	-2.0%	239.3
Nov-19	243	19%	451	-16%	0.54	1,584	-8%	6.52	57	96.8%	302,700	-1.2%	325,000	-2.4%	332,945	-2.8%	236.3
Dec-19	203	23%	304	-3%	0.67	1,325	-6%	6.53	65	96.3%	303,700	-1.5%	316,635	-2.6%	333,857	-1.2%	237.1
<b>2020</b>	<b>3,615</b>	<b>8%</b>	<b>7,775</b>	<b>-3%</b>	<b>0.46</b>	<b>1,728</b>	<b>-6%</b>	<b>5.74</b>	<b>54</b>	<b>96.8%</b>	<b>306,675</b>	<b>-1.8%</b>	<b>318,000</b>	<b>-0.6%</b>	<b>331,359</b>	<b>-0.5%</b>	<b>239.4</b>
Jan-20	219	9%	571	3%	0.38	1,416	-2%	6.47	64	96.9%	311,900	3.7%	319,500	12.1%	326,278	8.3%	243.5
Feb-20	230	9%	468	-3%	0.49	1,444	-2%	6.28	72	96.5%	312,300	2.6%	318,750	-1.0%	320,249	-5.3%	243.8
Mar-20	273	6%	602	-14%	0.45	1,482	-10%	5.43	55	97.0%	311,600	2.2%	335,000	5.7%	346,849	9.5%	243.2
Apr-20	212	-44%	488	-37%	0.43	1,462	-18%	6.90	56	96.2%	309,400	0.1%	320,000	-3.6%	339,104	-1.1%	241.5
May-20	326	-23%	755	-18%	0.43	1,591	-18%	4.88	48	96.8%	316,000	1.9%	338,000	3.7%	359,304	7.6%	246.7
Jun-20	513	37%	829	5%	0.62	1,599	-20%	3.12	42	97.4%	315,700	2.7%	329,900	3.1%	334,937	-0.9%	246.4
Jul-20	547	40%	816	9%	0.67	1,574	-19%	2.88	43	97.7%	324,400	4.2%	339,000	7.3%	350,801	5.7%	253.2
Aug-20	460	42%	780	7%	0.59	1,552	-21%	3.37	42	97.6%	323,700	3.8%	335,500	8.6%	353,925	9.5%	252.7
Sep-20	429	40%	810	13%	0.53	1,566	-18%	3.65	40	97.4%	326,200	6.2%	345,000	4.6%	357,935	2.0%	254.6
Oct-20	429	41%	622	4%	0.69	1,441	-16%	3.36	42	97.3%	320,100	4.4%	330,000	9.1%	351,831	10.6%	249.9
Nov-20	358	47%	423	-6%	0.85	1,218	-23%	3.40	41	97.2%	322,300	6.5%	314,500	-3.2%	326,120	-2.1%	251.6
Dec-20	273	34%	347	-14%	0.79	996	-25%	3.65	49	97.7%	325,800	7.3%	333,000	5.2%	345,579	3.5%	254.3
<b>2021</b>	<b>4,269</b>	<b>18%</b>	<b>7,511</b>	<b>-3%</b>	<b>0.57</b>	<b>1,445</b>	<b>-16%</b>	<b>4.06</b>	<b>47</b>	<b>97.2%</b>	<b>318,283</b>	<b>3.8%</b>	<b>330,000</b>	<b>3.8%</b>	<b>344,560</b>	<b>4.0%</b>	<b>248.5</b>
Jan-21	277	26%	557	-2%	0.50	1,080	-24%	3.90	55	97.5%	326,700	4.7%	312,000	-2.3%	348,359	6.8%	255.0
Feb-21	352	53%	542	16%	0.65	1,125	-22%	3.20	43	97.9%	337,200	8.0%	340,000	6.7%	353,542	10.4%	263.2
Mar-21	567	108%	926	54%	0.61	1,297	-12%	2.29	36	98.6%	340,700	9.3%	352,900	5.3%	362,165	4.4%	266.0
Apr-21	549	159%	957	96%	0.57	1,449	-1%	2.64	33	99.3%	345,300	11.6%	362,500	13.3%	373,170	10.0%	269.6
May-21	572	75%	1,016	35%	0.56	1,626	2%	2.84	34	98.8%	350,000	10.8%	369,900	9.4%	387,139	7.7%	273.2
Jun-21	605	18%	825	0%	0.73	1,558	-3%	2.58	37	98.6%	352,700	11.7%	350,000	6.1%	364,486	8.8%	275.3
Jul-21	487	-11%	758	-7%	0.64	1,560	-1%	3.20	42	98.4%	351,000	8.2%	340,000	0.3%	360,951	2.9%	274.0
Aug-21	491	7%	734	-6%	0.67	1,494	-4%	3.04	40	98.1%	348,100	7.5%	330,000	-1.6%	356,673	0.8%	271.7
Sep-21	396	-8%	651	-20%	0.61	1,436	-8%	3.63	43	97.9%	347,900	6.7%	325,250	-5.7%	341,937	-4.5%	271.6
Oct-21	425	-1%	587	-6%	0.72	1,300	-10%	3.06	43	97.9%	346,000	8.1%	356,500	8.0%	375,628	6.8%	270.1
Nov-21	413	15%	439	4%	0.94	1,098	-10%	2.66	47	98.0%	350,100	8.6%	365,000	16.1%	383,855	17.7%	273.3
Dec-21	267	-2%	293	-16%	0.91	882	-11%	3.30	45	98.1%	353,800	8.6%	345,000	3.6%	366,132	5.9%	276.2
<b>2022</b>	<b>5,401</b>	<b>27%</b>	<b>8,285</b>	<b>10%</b>	<b>0.65</b>	<b>1,325</b>	<b>-8%</b>	<b>2.94</b>	<b>40</b>	<b>98.4%</b>	<b>345,792</b>	<b>8.6%</b>	<b>349,900</b>	<b>6.0%</b>	<b>365,741</b>	<b>6.1%</b>	<b>269.9</b>
Jan-22	243	-12%	430	-23%	0.57	906	-16%	3.73	51	97.8%	354,100	8.4%	343,900	10.2%	359,587	3.2%	276.4
Feb-22	318	-10%	512	-6%	0.62	966	-14%	3.04	45	98.8%	360,700	7.0%	349,950	2.9%	358,671	1.5%	281.6
Mar-22	491	-13%	733	-21%	0.67	1,038	-20%	2.11	42	98.9%	365,700	7.3%	358,900	1.7%	370,137	2.2%	285.5
Apr-22	461	-16%	665	-31%	0.69	1,094	-24%	2.37	35	99.5%	366,600	6.2%	350,000	-3.4%	365,001	-2.2%	286.2
May-22	536	-6%	857	-16%	0.63	1,184	-27%	2.21	33	99.6%	375,300	7.2%	352,000	-4.8%	375,981	-2.9%	293.0
Jun-22	532	-12%	946	15%	0.56	1,333	-14%	2.51	30	99.8%	375,100	6.4%	363,500	3.9%	391,557	7.4%	292.8
Jul-22	448	-8%	711	-6%	0.63	1,341	-14%	2.99	31	99.1%	378,400	7.8%	336,625	-1.0%	363,504	0.7%	295.4
Aug-22	440	-10%	658	-10%	0.67	1,267	-15%	2.88	36	98.3%	369,400	6.1%	363,983	10.3%	380,131	6.6%	288.4
Sep-22	328	-17%	590	-9%	0.56	1,247	-13%	3.80	39	97.6%	364,100	4.7%	346,600	6.6%	374,298	9.5%	284.2
Oct-22	319	-25%	510	-13%	0.63	1,178	-9%	3.69	41	97.2%	364,800	5.4%	322,000	-9.7%	340,466	-9.4%	284.8
Nov-22	266	-36%	418	-5%	0.64	1,101	0%	4.14	44	97.2%	357,300	2.1%	335,500	-8.1%	349,336	-9.0%	278.9
Dec-22	202	-24%	231	-21%	0.87	897	2%	4.44	46	96.8%	350,400	-1.0%	334,800	-3.0%	371,646	1.5%	273.5
<b>2023</b>	<b>4,584</b>	<b>-15%</b>	<b>7,261</b>	<b>-12%</b>	<b>0.63</b>	<b>1,129</b>	<b>-15%</b>	<b>2.96</b>	<b>38</b>	<b>98.6%</b>	<b>365,158</b>	<b>5.6%</b>	<b>349,900</b>	<b>0.0%</b>	<b>368,838</b>	<b>0.8%</b>	<b>285.1</b>
Jan-23	201	-17%	414	-4%	0.49	930	3%	4.63	56	97.3%	360,700	1.9%	327,000	-4.9%	347,570	-3.3%	281.6
Feb-23	253	-20%	426	-17%	0.59	961	-1%	3.80	49	98.0%	363,500	0.8%	350,000	0.0%	356,597	-0.6%	283.8
Mar-23	397	-19%	582	-21%	0.68	973	-6%	2.45	46	98.3%	370,400	1.3%	353,800	-1.4%	376,608	1.7%	289.1
Apr-23	406	-12%	669	1%	0.61	1,066	-3%	2.63	40	98.3%	369,800	0.9%	336,300	-3.9%	366,626	0.4%	288.7
May-23	537	0%	765	-11%	0.70	1,106	-7%	2.06	33	99.1%	375,600	0.1%	360,000	2.3%	389,706	3.7%	293.2
Jun-23	540	2%	790	-16%	0.68	1,126	-16%	2.09	35	98.7%	376,800	0.5%	359,700	-1.0%	388,626	-0.7%	294.1
Jul-23	496	11%	703	-1%	0.71	1,152	-14%	2.32	36	98.9%	379,500	0.3%	355,000	5.5%	375,111	3.2%	296.3
Aug-23	526	20%	657	0%	0.80	1,052	-17%	2.00	36	98.8%	373,400	1.1%	350,000	-3.8%	372,825	-1.9%	291.5
Sep-23	373	14%	574	-3%	0.65	1,030	-17%	2.76	37	98.7%	377,100	3.6%	353,000	1.8%	370,647	-1.0%	294.4
Oct-23	380	19%	513	1%	0.74	945	-20%	2.49	36	98.3%	377,700	3.5%	365,000	13.4%	386,112	13.4%	294.8
Nov-23	313	18%	429	3%	0.73	875	-21%	2.80	38	97.9%	374,700	4.9%	349,900	4.3%	366,095	4.8%	292.5
Dec-23	228	13%	248	7%	0.92	735	-18%	3.22	42	98.3%	369,100	5.3%	356,825	6.6%	373,312	0.4%	288.1
<b>2023</b>	<b>4,650</b>	<b>1%</b>	<b>6,770</b>	<b>-7%</b>	<b>0.69</b>	<b>996</b>	<b>-12%</b>	<b>2.57</b>	<b>39</b>	<b>98.5%</b>	<b>372,358</b>	<b>2.0%</b>	<b>351,200</b>	<b>0.4%</b>	<b>375,142</b>	<b>1.7%</b>	<b>290.7</b>
Jan-24	245	22%	364	-12%	0.67	724	-22%	2.96	45	98.4%	375,500	4.1%	365,000	11.6%	385,259	10.8%	293.1
Feb-24	308	22%	434	2%	0.71	746	-22%	2.42	43	98.7%	383,000	5.4%	360,000	2.9%	366,305	2.7%	299.0
Mar-24	363	-9%	538	-8%	0.67	798	-18%	2.20	42	99.4%	390,800	5.5%	395,000	11.6%	403,397	7.1%	305.1
Apr-24	521	28%	727	9%	0.72	857	-20%	1.64	32	99.8%	394,500	6.7%	373,500	11.1%	394,402	7.6%	308.0
May-24	572	7%	799	4%	0.72	902	-18%	1.58	29	100.1%	397,200	5.8%	390,000	8.3%	396,064	1.6%	310.1
Jun-24	539	0%	668	-15%	0.81	867	-23%	1.61	31	99.9%	403,500	7.1%	390,000	8.4%	401,813	3.4%	315.0
Jul-24	520	5%	706	0%	0.74	858	-26%	1.65	29	9							



SASKATOON

	Sales	Y/Y%	New Listings	Y/Y%	S/NL Ratio	Inventory	Y/Y%	Months of Supply	DOM	SP/LP	Benchmark Price	Y/Y%	Median Price	Y/Y%	Average Price	Y/Y%	Index
Jan-13	156	-13%	365	5%	0.43	662	5%	4.24	44	98.1%	339,600	6.1%	352,450	10.1%	369,339	7.7%	254.4
Feb-13	172	-25%	336	-14%	0.51	682	2%	3.97	38	98.6%	342,700	5.9%	340,500	3.8%	362,090	7.7%	256.7
Mar-13	230	-8%	428	-1%	0.54	749	6%	3.26	35	98.5%	346,400	4.9%	349,500	6.4%	366,292	4.7%	259.5
Apr-13	309	3%	510	-2%	0.61	783	1%	2.53	31	98.2%	346,300	4.4%	369,661	3.8%	384,428	4.8%	259.4
May-13	311	-10%	647	13%	0.48	902	7%	2.90	27	98.4%	349,300	5.3%	368,000	7.3%	383,910	6.2%	261.6
Jun-13	319	5%	522	-2%	0.61	902	3%	2.83	33	98.1%	347,300	3.7%	359,900	4.3%	377,038	3.2%	260.1
Jul-13	320	2%	542	12%	0.59	912	4%	2.85	33	98.0%	346,000	3.0%	355,000	4.7%	369,839	1.9%	259.2
Aug-13	266	3%	555	29%	0.48	955	10%	3.59	36	98.1%	349,100	2.8%	365,000	5.8%	375,031	2.2%	261.5
Sep-13	251	1%	546	28%	0.46	964	15%	3.84	37	97.9%	351,600	5.0%	370,000	11.6%	377,933	8.9%	263.4
Oct-13	282	18%	502	21%	0.56	916	16%	3.25	35	97.6%	346,500	2.2%	365,000	5.2%	371,866	3.1%	259.6
Nov-13	202	-3%	315	-1%	0.64	817	15%	4.04	47	97.6%	347,800	4.4%	357,750	-0.3%	375,744	3.3%	260.5
Dec-13	130	20%	225	32%	0.58	703	16%	5.41	47	97.8%	350,400	3.2%	358,500	0.0%	364,495	-1.0%	262.5
<b>2014</b>	<b>2,948</b>	<b>-1%</b>	<b>5,493</b>	<b>9%</b>	<b>0.54</b>	<b>829</b>	<b>8%</b>	<b>3.37</b>	<b>36</b>	<b>98.1%</b>	<b>346,917</b>	<b>4.2%</b>	<b>360,000</b>	<b>5.9%</b>	<b>374,397</b>	<b>4.5%</b>	<b>259.9</b>
Jan-14	149	-4%	395	8%	0.38	758	15%	5.09	50	97.7%	350,100	3.1%	369,900	5.0%	397,997	7.8%	262.2
Feb-14	200	16%	379	13%	0.53	761	12%	3.81	41	97.5%	354,000	3.3%	381,500	12.0%	383,195	5.8%	265.2
Mar-14	258	12%	528	23%	0.49	858	15%	3.33	41	98.3%	353,100	1.9%	380,950	9.0%	387,126	5.7%	264.5
Apr-14	300	-3%	593	16%	0.51	930	19%	3.10	37	97.9%	355,500	2.7%	375,000	1.4%	382,422	-0.5%	266.3
May-14	340	9%	653	1%	0.52	1,017	13%	2.99	33	97.9%	358,500	2.6%	373,950	1.6%	388,895	1.3%	268.5
Jun-14	370	16%	611	17%	0.61	1,005	11%	2.72	31	98.0%	357,600	3.0%	386,000	7.3%	397,053	5.3%	267.9
Jul-14	286	-11%	653	20%	0.44	1,069	17%	3.74	32	97.9%	360,800	4.3%	383,200	7.9%	393,345	6.4%	270.3
Aug-14	268	1%	580	5%	0.46	1,084	14%	4.04	40	97.9%	360,300	3.2%	371,950	1.9%	396,281	5.7%	269.9
Sep-14	303	21%	646	18%	0.47	1,067	11%	3.52	37	97.9%	357,200	1.6%	373,000	0.8%	384,462	1.7%	267.6
Oct-14	279	-1%	524	4%	0.53	1,003	9%	3.59	38	97.6%	359,000	3.6%	365,000	0.0%	389,706	4.8%	268.9
Nov-14	197	-2%	372	18%	0.53	941	15%	4.78	36	97.8%	362,200	4.1%	374,900	4.8%	389,053	3.5%	271.3
Dec-14	140	8%	218	-3%	0.64	743	6%	5.31	43	97.3%	352,600	0.6%	372,000	3.8%	387,861	6.4%	264.1
<b>2015</b>	<b>3,090</b>	<b>5%</b>	<b>6,152</b>	<b>12%</b>	<b>0.50</b>	<b>936</b>	<b>13%</b>	<b>3.64</b>	<b>37</b>	<b>97.8%</b>	<b>356,742</b>	<b>2.8%</b>	<b>375,000</b>	<b>4.2%</b>	<b>389,820</b>	<b>4.1%</b>	<b>267.2</b>
Jan-15	125	-16%	451	14%	0.28	856	13%	6.85	51	97.7%	361,900	3.4%	376,596	1.8%	387,253	-2.7%	271.1
Feb-15	161	-20%	415	9%	0.39	887	17%	5.51	42	97.8%	362,500	2.4%	385,000	0.9%	408,469	6.6%	271.5
Mar-15	240	-7%	574	9%	0.42	1,011	18%	4.21	44	97.9%	358,500	1.5%	357,950	-6.0%	373,998	-3.4%	268.5
Apr-15	271	-10%	654	10%	0.41	1,140	23%	4.21	39	98.0%	357,400	0.5%	375,000	0.0%	382,730	0.1%	267.7
May-15	280	-18%	657	1%	0.43	1,225	20%	4.38	41	98.0%	357,300	-0.3%	395,500	5.8%	403,213	3.7%	267.6
Jun-15	332	-10%	707	16%	0.47	1,278	27%	3.85	38	98.0%	358,400	0.2%	372,500	-3.5%	386,377	-2.7%	268.5
Jul-15	298	4%	582	-11%	0.51	1,241	16%	4.16	43	97.5%	359,900	-0.2%	372,500	-2.8%	403,005	2.5%	269.6
Aug-15	219	-18%	577	-1%	0.38	1,246	15%	5.69	47	97.5%	355,500	-1.3%	381,000	2.4%	393,096	-0.8%	266.3
Sep-15	266	-12%	657	2%	0.40	1,209	13%	4.55	38	97.3%	351,100	-1.7%	353,750	-5.2%	361,851	-5.9%	263.0
Oct-15	202	-28%	512	-2%	0.39	1,180	18%	5.84	42	97.5%	355,100	-1.1%	385,000	5.5%	386,515	-0.8%	266.0
Nov-15	219	11%	390	5%	0.56	1,057	12%	4.83	46	97.5%	356,600	-1.5%	374,900	0.0%	380,090	-2.3%	267.1
Dec-15	138	-1%	258	18%	0.53	859	16%	6.22	52	97.2%	350,200	-0.7%	371,250	-0.2%	386,806	-0.3%	262.3
<b>2016</b>	<b>2,751</b>	<b>-11%</b>	<b>6,434</b>	<b>5%</b>	<b>0.43</b>	<b>1,099</b>	<b>17%</b>	<b>4.79</b>	<b>43</b>	<b>97.7%</b>	<b>357,033</b>	<b>0.1%</b>	<b>375,000</b>	<b>0.0%</b>	<b>387,480</b>	<b>-0.6%</b>	<b>267.4</b>
Jan-16	125	0%	407	-10%	0.31	905	6%	7.24	44	97.0%	349,800	-3.3%	373,500	-0.8%	387,646	0.1%	262.0
Feb-16	153	-5%	429	3%	0.36	975	10%	6.37	53	96.5%	352,400	-2.8%	355,000	-7.8%	372,416	-8.8%	264.0
Mar-16	226	-6%	550	-4%	0.41	1,011	0%	4.47	47	97.3%	349,300	-2.6%	365,000	2.0%	381,506	2.0%	261.6
Apr-16	273	1%	613	-6%	0.45	1,112	-2%	4.07	40	97.9%	353,700	-1.0%	359,900	-4.0%	377,672	-1.3%	264.9
May-16	273	-3%	636	-3%	0.43	1,223	0%	4.48	32	97.4%	356,500	-0.2%	370,000	-6.4%	387,669	-3.9%	267.0
Jun-16	281	-15%	592	-16%	0.47	1,216	-5%	4.33	42	97.7%	357,400	-0.3%	367,000	-1.5%	386,557	0.0%	267.7
Jul-16	262	-12%	505	-13%	0.52	1,168	-6%	4.46	42	97.1%	355,000	-1.4%	383,950	3.1%	404,801	0.4%	265.9
Aug-16	250	14%	558	-3%	0.45	1,177	-6%	4.71	45	97.3%	352,500	-0.8%	375,750	-1.4%	386,538	-1.7%	264.0
Sep-16	238	-11%	525	-20%	0.45	1,097	-9%	4.61	43	97.3%	351,200	0.0%	360,121	1.8%	387,557	7.1%	263.1
Oct-16	217	7%	513	0%	0.42	1,061	-10%	4.89	41	97.1%	349,500	-1.6%	368,000	-4.4%	384,194	-0.6%	261.8
Nov-16	175	-20%	395	1%	0.44	1,000	-5%	5.41	43	96.9%	342,000	-4.1%	365,000	-2.6%	388,153	2.1%	256.2
Dec-16	131	-5%	246	-5%	0.53	844	-2%	6.44	44	96.6%	344,800	-1.5%	345,000	-7.1%	360,324	-6.8%	258.3
<b>2017</b>	<b>2,604</b>	<b>-5%</b>	<b>5,969</b>	<b>-7%</b>	<b>0.44</b>	<b>1,066</b>	<b>-3%</b>	<b>4.91</b>	<b>43</b>	<b>97.2%</b>	<b>351,175</b>	<b>-1.6%</b>	<b>368,000</b>	<b>-1.9%</b>	<b>385,041</b>	<b>-0.6%</b>	<b>263.0</b>
Jan-17	135	8%	446	10%	0.30	915	1%	6.78	46	97.1%	351,200	0.4%	340,000	-9.0%	366,972	-5.3%	263.1
Feb-17	160	5%	396	-8%	0.40	949	-3%	5.93	53	96.6%	346,900	-1.6%	359,250	1.2%	373,207	0.2%	259.9
Mar-17	195	-14%	562	2%	0.35	1,094	8%	5.61	39	97.2%	349,900	0.2%	375,000	2.7%	393,040	3.0%	262.1
Apr-17	218	-20%	548	-11%	0.40	1,148	3%	5.27	43	97.8%	347,800	-1.7%	367,750	2.2%	394,731	4.5%	260.5
May-17	296	8%	706	11%	0.42	1,266	4%	4.28	43	97.4%	352,000	-1.3%	370,000	0.0%	389,928	0.6%	263.7
Jun-17	285	1%	619	5%	0.46	1,290	6%	4.53	37	97.3%	348,700	-2.4%	360,000	-1.9%	381,106	-1.4%	261.2
Jul-17	224	-15%	553	10%	0.41	1,321	13%	5.90	41	96.8%	344,500	-3.0%	367,000	-4.4%	380,183	-6.1%	258.1
Aug-17	225	-10%	553	-1%	0.41	1,315	12%	5.84	45	97.5%	347,400	-1.4%	365,000	-2.9%	375,842	-2.8%	260.2
Sep-17	182	-24%	537	2%	0.34	1,308	19%	7.19	45	97.0%	345,100	-1.7%	364,500	1.2%	385,248	-0.6%	258.5
Oct-17	213	-2%	471	-8%	0.45	1,202	13%	5.64	47	97.0%	340,200	-2.7%	353,500	-3.9%	357,466	-7.0%	254.8
Nov-17	196	12%	384	-3%	0.51	1,105	11%	5.64	52	96.6%	339,100	-0.8%	356,250	-2.4%	373,329	-3.8%	254.0
Dec-17	144	10%	190	-23%	0.76	887	5%	6.16	58	96.2%	332,100	-3.7%	364,950	5.8%	377,163	4.7%	248.8
<b>2018</b>	<b>2,473</b>	<b>-5%</b>	<b>5,965</b>	<b>0%</b>	<b>0.41</b>	<b>1,150</b>	<b>8%</b>	<b>5.58</b>	<b>45</b>	<b>97.1%</b>	<b>345,408</b>	<b>-1.6%</b>	<b>363,500</b>	<b>-1.2%</b>	<b>379,882</b>	<b>-1.3%</b>	<b>258.7</b>
Jan-18	151	12%	340	-24%	0.44	855	-7%	5.66	61	96.9%	337,700	-3.8%	352,000	3.5%	369,031	0.6%	253.0
Feb-18	140	-13%	336	-15%	0.42	894	-6%	6.39	53	96.6%	343,800	-0.9%	350,000	-2.6%	367,727	-1.5%	257.5
Mar-18	162	-17%	418	-26%	0.39	956	-13%	5.90	53	96.9%	349,000	-0.3%	353,950	-5.6%	371,204	-5.6%	261.4
Apr-18	254	17%	474	-14%	0.54	994	-13%	3.91	50	97.0%	345,800	-0.6%	340,500	-7.4%	365,878	-7.3%	259.0
May-18	257	-13%	589	-17%	0.44	1,114	-12%	4.33	39	97.3%	350,100	-0.5%	357,400	-3.4%	370,723	-4.9%	262.2
Jun-18	235	-18%	551	-11%	0.43	1,201	-7%	5.11	40	97.2%	337,900	-3.1%	363,000	0.8%	373,868	-1.9%	253.1
Jul-18	261	17%	470	-15%	0.56	1,178	-11%	4.51	45	97.1%	345,800	0.4%	357,000	-2.7%	384,427		



SASKATOON

	Sales	Y/Y%	New Listings	Y/Y%	S/NL Ratio	Inventory	Y/Y%	Months of Supply	DOM	SP/LP	Benchmark Price	Y/Y%	Median Price	Y/Y%	Average Price	Y/Y%	Index
Jan-19	135	-11%	347	2%	0.39	841	-2%	6.23	60	96.1%	331,800	-1.7%	329,000	-6.5%	342,433	-7.2%	248.5
Feb-19	162	16%	304	-10%	0.53	834	-7%	5.15	51	97.3%	338,000	-1.7%	359,450	2.7%	368,841	0.3%	253.2
Mar-19	168	4%	448	7%	0.38	936	-2%	5.57	52	96.8%	338,900	-2.9%	351,000	-0.8%	358,891	-3.3%	253.9
Apr-19	254	0%	489	3%	0.52	1,017	2%	4.00	52	97.4%	344,000	-0.5%	370,000	8.7%	378,884	3.6%	257.7
May-19	289	12%	624	6%	0.46	1,147	3%	3.97	41	97.4%	345,200	-1.4%	360,000	0.7%	373,428	0.7%	258.6
Jun-19	266	13%	526	-5%	0.51	1,186	-1%	4.46	41	97.0%	341,500	1.1%	357,725	-1.5%	377,885	1.1%	255.8
Jul-19	253	-3%	513	9%	0.49	1,179	0%	4.66	42	97.1%	346,600	0.2%	369,900	3.6%	383,743	-0.2%	259.6
Aug-19	207	-6%	495	4%	0.42	1,217	4%	5.88	47	96.8%	347,400	1.3%	361,900	2.7%	367,701	-1.5%	260.2
Sep-19	216	18%	497	16%	0.43	1,180	3%	5.46	47	96.7%	341,200	-0.8%	365,000	8.0%	396,140	13.1%	255.6
Oct-19	199	5%	415	8%	0.48	1,088	4%	5.47	46	97.2%	342,100	-1.2%	350,000	-3.0%	361,322	-2.9%	256.3
Nov-19	183	32%	303	-13%	0.60	986	-2%	5.39	50	97.0%	336,600	-0.2%	372,000	1.1%	364,855	-3.6%	252.1
Dec-19	138	17%	198	-1%	0.70	805	-2%	5.83	61	96.2%	337,200	-1.3%	361,100	2.4%	369,186	-2.7%	252.6
<b>2020</b>	<b>2,470</b>	<b>7%</b>	<b>5,159</b>	<b>3%</b>	<b>0.48</b>	<b>1,035</b>	<b>0%</b>	<b>5.03</b>	<b>48</b>	<b>97.0%</b>	<b>340,875</b>	<b>-0.8%</b>	<b>361,250</b>	<b>2.3%</b>	<b>372,201</b>	<b>0.2%</b>	<b>255.3</b>
Jan-20	159	18%	377	9%	0.42	847	1%	5.33	63	97.0%	348,400	5.0%	359,500	9.3%	364,475	6.4%	261.0
Feb-20	151	-7%	311	2%	0.49	877	5%	5.81	62	96.6%	350,100	3.6%	360,000	0.2%	363,744	-1.4%	262.2
Mar-20	194	15%	402	-10%	0.48	905	-3%	4.66	51	97.2%	348,400	2.8%	369,200	5.2%	379,224	5.7%	261.0
Apr-20	152	-40%	314	-36%	0.48	884	-13%	5.82	48	96.3%	345,800	0.5%	340,000	-8.1%	380,204	0.3%	259.0
May-20	241	-17%	517	-17%	0.47	967	-16%	4.01	43	97.1%	353,000	2.3%	369,000	2.5%	389,632	4.3%	264.4
Jun-20	375	41%	561	7%	0.67	957	-19%	2.55	38	97.8%	352,100	3.1%	370,000	3.4%	371,657	-1.6%	263.7
Jul-20	385	52%	556	8%	0.69	933	-21%	2.42	38	97.9%	363,100	4.8%	384,900	4.1%	392,977	2.4%	272.0
Aug-20	344	66%	530	7%	0.65	910	-25%	2.65	39	97.8%	361,400	4.0%	364,250	0.6%	389,338	5.9%	270.7
Sep-20	317	47%	548	10%	0.58	911	-23%	2.87	35	97.5%	363,700	6.6%	377,900	3.5%	390,820	-1.3%	272.4
Oct-20	317	59%	394	-5%	0.80	803	-26%	2.53	38	97.4%	356,500	4.2%	365,000	4.3%	389,882	7.9%	267.0
Nov-20	248	36%	280	-8%	0.89	650	-34%	2.62	37	97.4%	359,500	6.8%	357,300	-4.0%	370,731	1.6%	269.3
Dec-20	195	41%	196	-1%	0.99	489	-39%	2.51	40	97.7%	365,100	8.3%	363,000	0.5%	373,427	1.1%	273.5
<b>2021</b>	<b>3,078</b>	<b>25%</b>	<b>4,986</b>	<b>-3%</b>	<b>0.62</b>	<b>844</b>	<b>-18%</b>	<b>3.29</b>	<b>42</b>	<b>97.4%</b>	<b>355,592</b>	<b>4.3%</b>	<b>367,500</b>	<b>1.7%</b>	<b>381,735</b>	<b>2.6%</b>	<b>276.4</b>
Jan-21	189	19%	309	-18%	0.61	504	-40%	2.67	47	97.8%	365,800	5.0%	360,000	0.1%	387,264	6.3%	274.0
Feb-21	227	50%	318	2%	0.71	524	-40%	2.31	39	98.5%	378,200	8.0%	382,000	6.1%	410,810	12.9%	283.3
Mar-21	384	98%	568	41%	0.68	604	-33%	1.57	25	99.0%	381,700	9.6%	390,500	5.8%	408,749	7.8%	285.9
Apr-21	390	157%	632	101%	0.62	717	-19%	1.84	28	99.5%	386,700	11.8%	399,450	17.5%	412,290	8.4%	289.7
May-21	395	64%	625	21%	0.63	798	-17%	2.02	28	99.1%	391,900	11.0%	405,000	9.8%	426,732	9.5%	293.6
Jun-21	383	2%	567	1%	0.68	818	-15%	2.14	29	99.1%	395,500	12.3%	394,900	6.7%	417,968	12.5%	296.3
Jul-21	302	-22%	493	-11%	0.61	849	-9%	2.81	31	98.9%	393,700	8.4%	389,150	1.1%	416,806	6.1%	294.9
Aug-21	309	-10%	473	-11%	0.65	813	-11%	2.63	32	98.3%	389,600	7.8%	395,000	8.4%	404,260	3.8%	291.8
Sep-21	254	-20%	406	-26%	0.63	790	-13%	3.11	38	98.1%	389,700	7.1%	374,150	-1.0%	395,990	1.3%	291.9
Oct-21	296	-7%	373	-5%	0.79	698	-13%	2.36	39	98.2%	387,100	8.6%	390,000	6.8%	414,724	6.4%	290.0
Nov-21	289	17%	239	-15%	1.21	524	-19%	1.81	44	98.0%	391,900	9.0%	400,000	12.0%	428,029	15.5%	293.6
Dec-21	183	-6%	182	-7%	1.01	400	-18%	2.19	38	98.3%	397,100	8.8%	378,000	4.1%	409,073	9.5%	297.5
<b>2022</b>	<b>3,601</b>	<b>17%</b>	<b>5,185</b>	<b>4%</b>	<b>0.69</b>	<b>670</b>	<b>-21%</b>	<b>2.23</b>	<b>33</b>	<b>98.7%</b>	<b>387,408</b>	<b>8.9%</b>	<b>390,000</b>	<b>6.1%</b>	<b>412,533</b>	<b>8.1%</b>	<b>290.2</b>
Jan-22	147	-22%	233	-25%	0.63	407	-19%	2.77	43	98.0%	397,600	8.7%	387,500	7.6%	423,923	9.5%	297.8
Feb-22	190	-16%	329	3%	0.58	476	-9%	2.51	35	99.1%	405,700	7.3%	405,000	6.0%	421,377	2.6%	303.9
Mar-22	290	-24%	435	-23%	0.67	526	-13%	1.81	34	99.2%	411,200	7.7%	414,250	6.1%	432,024	5.7%	308.0
Apr-22	274	-30%	412	-35%	0.67	578	-19%	2.11	29	99.9%	412,400	6.6%	405,050	1.4%	427,649	3.7%	308.9
May-22	310	-22%	533	-15%	0.58	661	-17%	2.13	27	100.3%	423,900	8.2%	416,000	2.7%	445,091	4.3%	317.5
Jun-22	339	-11%	581	2%	0.58	727	-11%	2.14	25	100.3%	423,500	7.1%	426,000	7.9%	460,088	10.1%	317.2
Jul-22	258	-15%	478	-3%	0.54	779	-8%	3.02	27	99.7%	427,200	8.5%	414,750	6.6%	437,945	5.1%	320.0
Aug-22	288	-7%	439	-7%	0.66	744	-8%	2.58	31	98.5%	415,400	6.6%	420,000	6.3%	445,959	10.3%	311.2
Sep-22	208	-18%	405	0%	0.51	760	-4%	3.65	36	97.7%	408,700	4.9%	420,065	12.3%	439,333	10.9%	306.1
Oct-22	194	-34%	324	-13%	0.60	720	3%	3.71	40	97.4%	409,800	5.9%	378,500	-2.9%	394,906	-4.8%	307.0
Nov-22	166	-43%	273	14%	0.61	670	28%	4.04	41	97.2%	400,400	2.2%	384,700	-3.8%	404,477	-5.5%	299.9
Dec-22	143	-22%	143	-21%	1.00	534	34%	3.73	45	96.9%	390,400	-1.7%	380,000	0.5%	419,841	2.6%	292.4
<b>2023</b>	<b>2,807</b>	<b>-22%</b>	<b>4,585</b>	<b>-12%</b>	<b>0.61</b>	<b>632</b>	<b>-6%</b>	<b>2.70</b>	<b>33</b>	<b>99.0%</b>	<b>410,517</b>	<b>6.0%</b>	<b>410,000</b>	<b>5.1%</b>	<b>432,985</b>	<b>5.0%</b>	<b>307.5</b>
Jan-23	120	-18%	236	1%	0.51	536	32%	4.47	47	97.6%	405,600	1.4%	392,750	1.4%	415,305	-2.0%	303.8
Feb-23	146	-23%	257	-22%	0.57	562	18%	3.85	47	98.2%	409,400	0.9%	409,500	1.1%	421,695	0.1%	306.7
Mar-23	247	-15%	375	-14%	0.66	584	11%	2.36	43	98.6%	418,900	1.9%	417,000	0.7%	444,407	2.9%	313.8
Apr-23	247	-10%	407	-1%	0.61	640	11%	2.59	39	98.5%	417,100	1.1%	418,000	3.2%	432,682	1.2%	312.4
May-23	320	3%	461	-14%	0.69	657	-1%	2.05	31	99.5%	426,000	0.5%	432,450	4.0%	468,554	5.3%	319.1
Jun-23	321	-5%	524	-10%	0.61	699	-4%	2.18	32	98.9%	426,900	0.8%	444,000	4.2%	472,792	2.8%	319.8
Jul-23	289	12%	442	-8%	0.65	727	-7%	2.52	35	99.2%	430,700	0.8%	425,000	2.5%	444,652	1.5%	322.6
Aug-23	310	8%	416	-5%	0.75	681	-8%	2.20	34	99.1%	423,000	1.8%	420,000	0.0%	439,502	-1.4%	316.9
Sep-23	220	6%	398	-2%	0.55	697	-8%	3.17	36	98.9%	428,000	4.7%	434,950	3.5%	444,568	1.2%	320.6
Oct-23	247	27%	330	2%	0.75	618	-14%	2.50	34	98.6%	428,500	4.6%	430,000	13.6%	442,160	12.0%	321.0
Nov-23	191	15%	263	-4%	0.73	569	-15%	2.98	38	98.2%	424,200	5.9%	414,500	7.7%	432,992	7.0%	317.8
Dec-23	128	-10%	147	3%	0.87	476	-11%	3.72	47	98.4%	418,200	7.1%	435,500	14.6%	443,796	5.7%	313.3
<b>2023</b>	<b>2,786</b>	<b>-1%</b>	<b>4,256</b>	<b>-7%</b>	<b>0.65</b>	<b>621</b>	<b>-2%</b>	<b>2.67</b>	<b>37</b>	<b>98.8%</b>	<b>421,375</b>	<b>2.6%</b>	<b>425,000</b>	<b>3.7%</b>	<b>445,450</b>	<b>2.9%</b>	<b>315.7</b>
Jan-24	150	25%	235	0%	0.64	460	-14%	3.07	46	98.4%	426,400	5.1%	420,500	7.1%	447,278	7.7%	319.4
Feb-24	178	22%	255	-1%	0.70	467	-17%	2.62	47	98.6%	433,600	5.9%	415,750	1.5%	416,971	-1.1%	324.8
Mar-24	217	-12%	322	-14%	0.67	500	-14%	2.30	43	99.4%	444,300	6.1%	464,900	11.5%	475,579	7.0%	332.8
Apr-24	298	21%	442	9%	0.67	537	-16%	1.80	33	100.0%	449,000	7.6%	458,450	9.7%	466,823	7.9%	336.3
May-24	335	5%	495	7%	0.68	567	-14%	1.69	30	100.5%	455,000	6.8%	465,000	7.5%	474,968	1.4%	340.8
Jun-24	314	-2%	392	-25%	0.80	529	-24%	1.68	33	100.3%	462,600	8.4%	474,950	7.0%	487,377	3.1%	346.5
Jul-24	306	6%	444	0%	0.69	529	-27%	1.73	29	100.3%	466,700	8.4%	474,900	11.7%	496,749	11.7%	349.6
Aug-24</																	