



The City of Saskatoon reported 432 sales in September, an increase of 16 percent year over year and 24 percent above long-term, 10-year trends.

Limited supply options continue to prevent even stronger sales figures in Saskatoon. Monthly inventory levels remain over 46 percent below the 10-year average and the lowest reported in September since 2007.

The City of Saskatoon reported a record benchmark price of \$401,800 in September, down from \$404,900 in August but nearly seven percent higher than September 2023.



SALES

432

↑ 15.8% Y/Y | ↑ 6.1% YTD

VS. 10-YEAR AVERAGE

↑ 24.0% | ↑ 19.4% YTD



NEW LISTINGS

654

↑ 13.9% Y/Y | ↑ 0.5% YTD

VS. 10-YEAR AVERAGE

↓ 12.2% | ↓ 17.7% YTD




INVENTORY

918

↓ 10.9% Y/Y | Monthly trend*

VS. 10-YEAR AVERAGE

↓ 45.9% | ↓ 47.9% YTD



MONTHS OF SUPPLY

2.13


↓ 23.0% Y/Y | Monthly trend*

VS. 10-YEAR AVERAGE

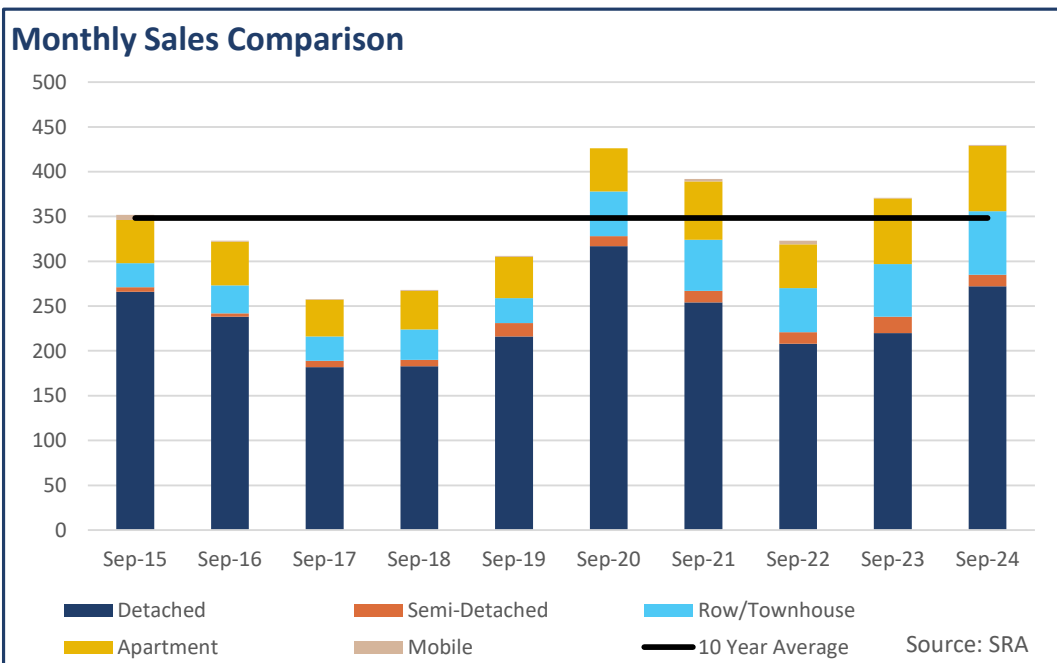
↓ 58.4% | ↓ 58.3% YTD

TOTAL RESIDENTIAL BENCHMARK PRICE

\$ 401,800 | ↑ **6.5%** Y/Y



Monthly trend*





SASKATOON - SEPTEMBER 2024

September 2024

	Sales		New Listings		Inventory		Months of Supply		DOM	Benchmark		Avg Price	
	Actual	Y/Y%	Actual	Y/Y%	Actual	Y/Y%	Actual	Y/Y%	Actual	Actual	Y/Y%	Actual	Y/Y%
Detached	272	24%	436	10%	598	-14%	2.20	-31%	29	\$458,900	7%	\$464,949	5%
Semi-Detached	13	-28%	25	39%	52	24%	4.00	71%	57	\$495,400	6%	\$376,826	15%
Row/Townhouse	71	20%	81	37%	91	-9%	1.28	-24%	26	\$332,800	9%	\$333,794	8%
Apartment	73	0%	102	16%	158	-10%	2.16	-10%	44	\$244,100	15%	\$281,286	33%
Acreage	0	-	0	-	0	-100%	-	-	-	-	-	-	-
Mobile	1	0%	4	33%	10	233%	10.00	233%	41	-	-	\$30,000	-39%
Muti-Family	2	0%	6	-25%	9	-25%	4.50	-25%	7	-	-	\$632,450	50%
Total Residential	432	16%	654	14%	918	-11%	2.13	-23%	32	\$401,800	7%	\$409,474	10%

10-Year Averages

	Sales		New Listings		Inventory		Months of Supply		DOM	Benchmark		Avg Price	
	Avg	%Diff	Avg	%Diff	Avg	%Diff	Avg	%Diff	Avg	Avg	%Diff	Avg	%Diff
Total Residential	348	24%	745	-12%	1,698	-46%	5.11	-58%	46	\$332,410	21%	\$350,148	17%

Year-to-Date

September 2024

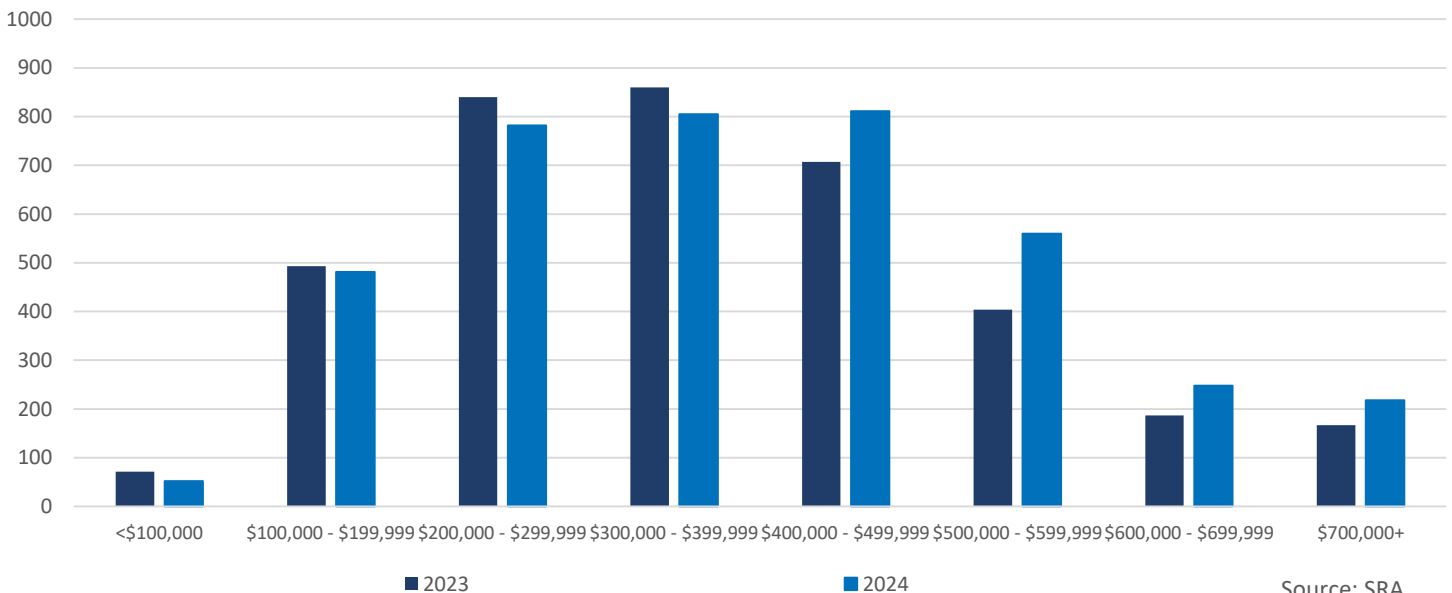
	Sales		New Listings		Inventory		Months of Supply		DOM	Benchmark		Avg Price	
	Actual	Y/Y%	Actual	Y/Y%	Actual	Y/Y%	Actual	Y/Y%	Actual	Actual	Y/Y%	Actual	Y/Y%
Detached	2,333	5%	3,485	-1%	533	-17%	2.06	-21%	34	\$451,100	7%	\$470,177	5%
Semi-Detached	186	20%	238	-1%	49	2%	2.37	-15%	46	\$486,344	5%	\$412,982	9%
Row/Townhouse	622	7%	754	1%	87	-30%	1.27	-35%	27	\$324,811	11%	\$320,348	7%
Apartment	768	6%	1,054	4%	163	-23%	1.91	-28%	34	\$233,611	12%	\$235,480	9%
Acreage	1	-	1	-50%	0	-60%	2.00	-	63	-	-	\$1,135,000	-
Mobile	17	21%	26	53%	6	19%	2.94	-2%	36	-	-	\$72,112	-30%
Muti-Family	30	0%	51	9%	8	-11%	2.37	-11%	34	-	-	\$498,477	11%
Total Residential	3,957	6%	5,609	1%	847	-19%	1.93	-24%	33	\$395,300	6%	\$397,058	6%

10-Year Averages

	Sales		New Listings		Inventory		Months of Supply		DOM	Benchmark		Avg Price	
	Avg	%Diff	Avg	%Diff	Avg	%Diff	Avg	%Diff	Avg	Avg	%Diff	Avg	%Diff
Total Residential	3,315	19%	6,813	-18%	1,626	-48%	4.62	-58%	45	\$332,077	19%	\$353,015	12%

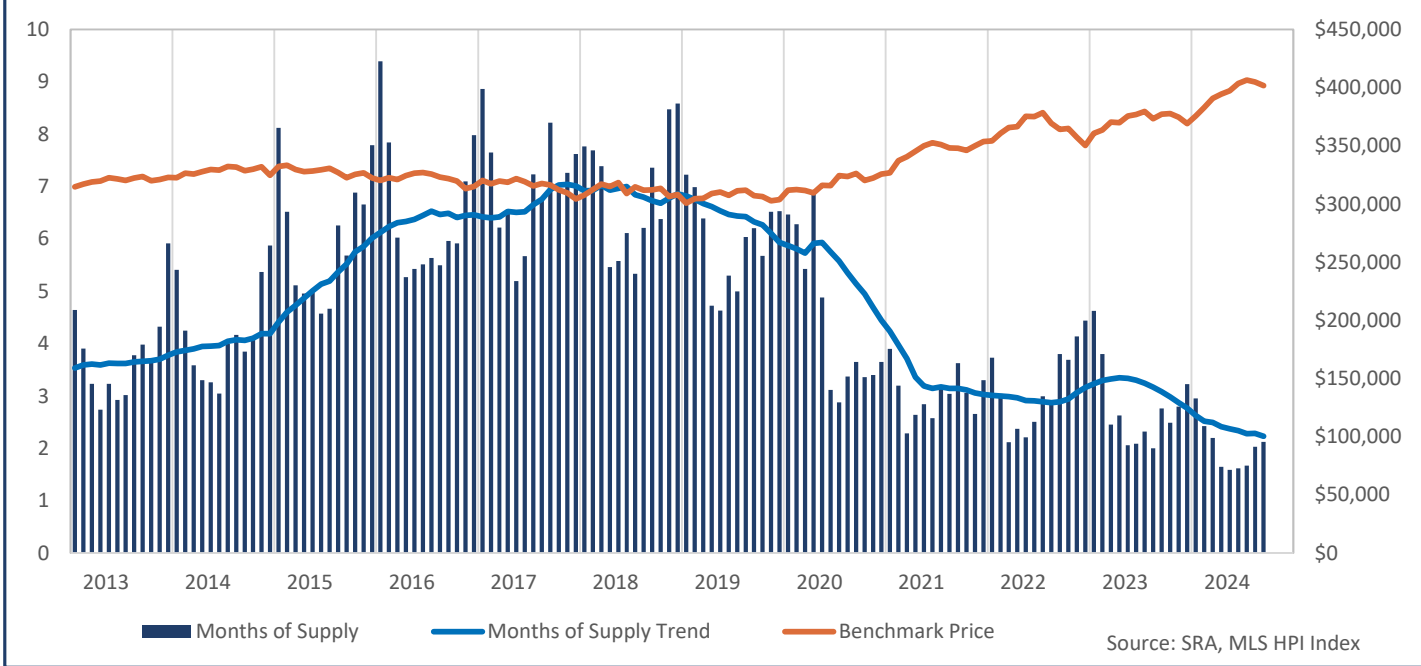
Residential Sales by Price Range

YTD-SEP

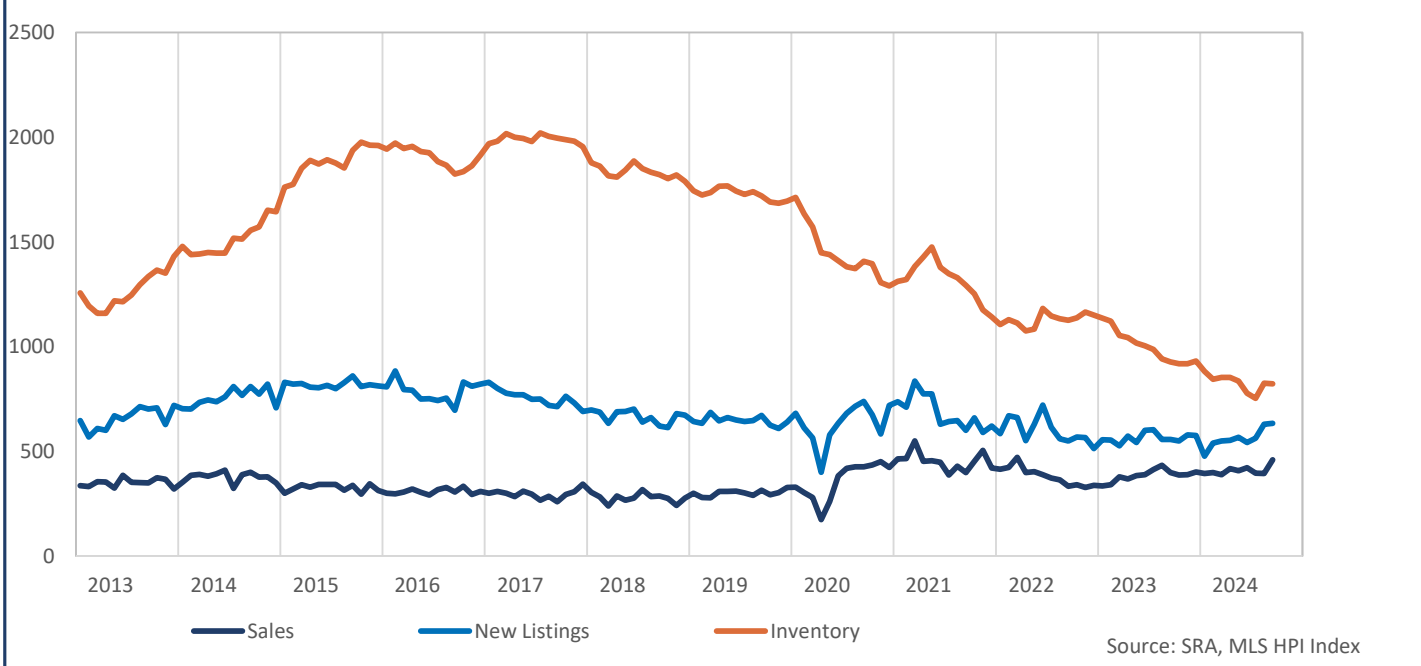




Residential Months of Supply and Price



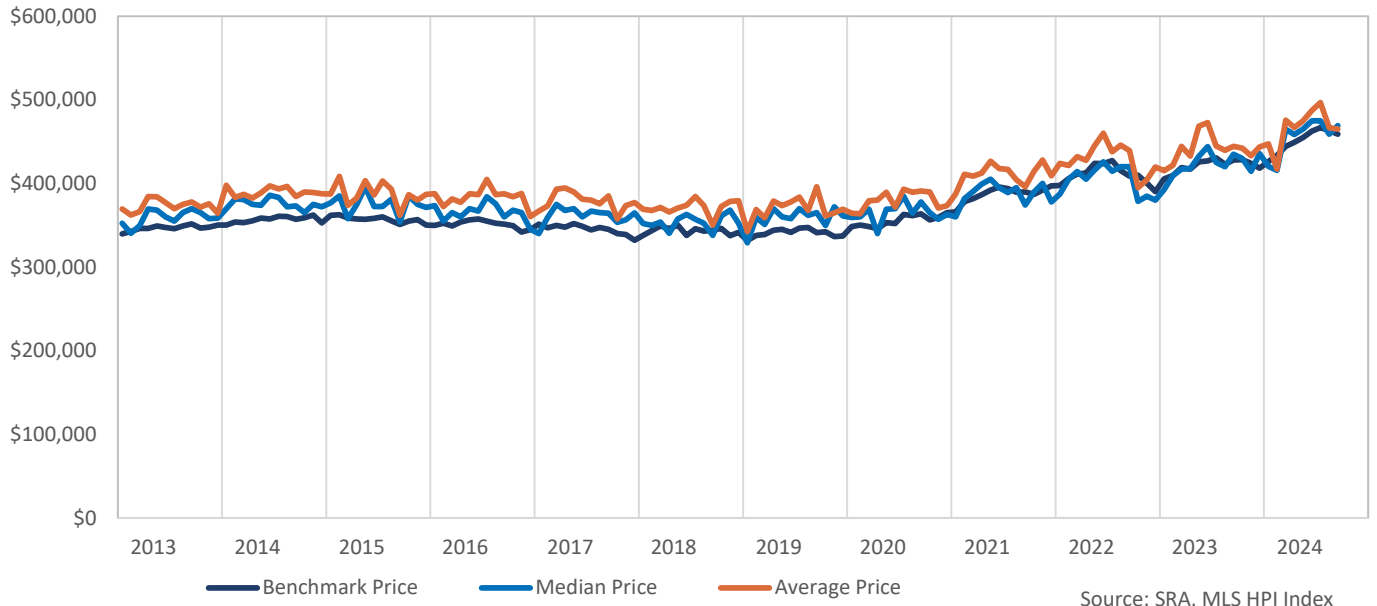
Residential Stats - Seasonally Adjusted



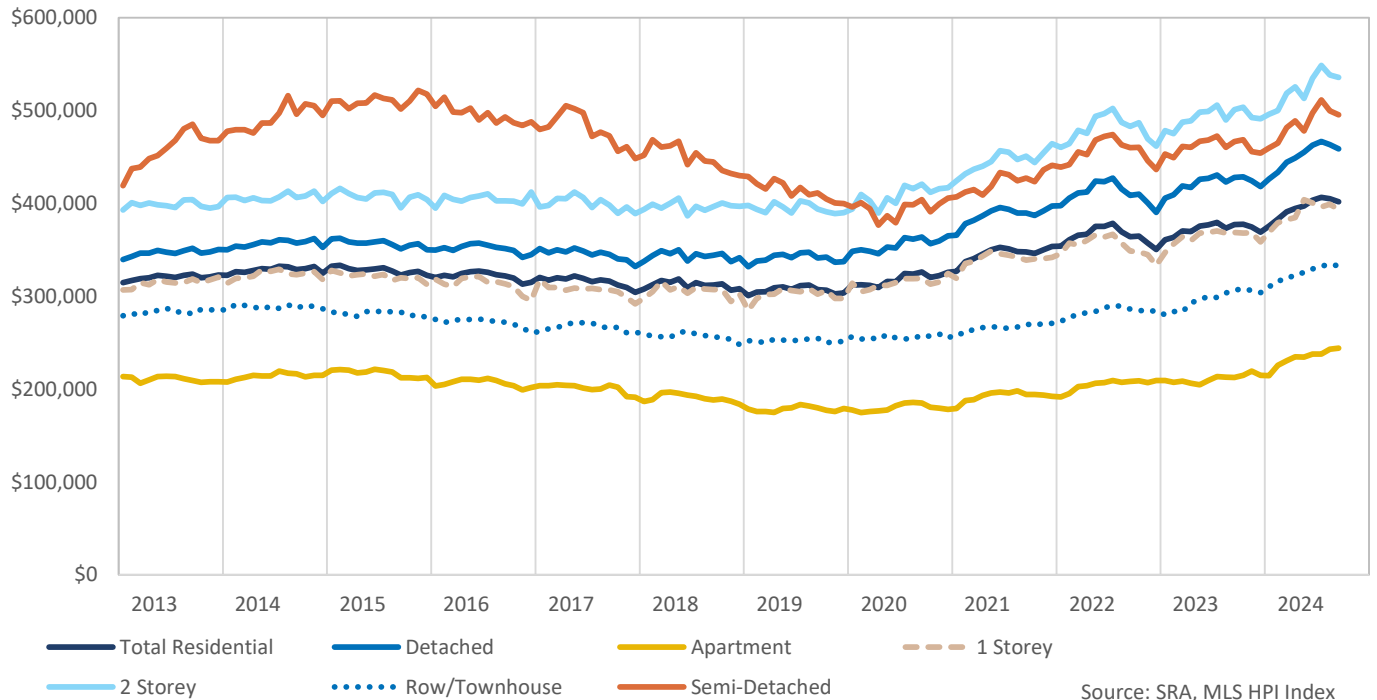


SASKATOON - SEPTEMBER 2024

Detached Pricing



Benchmark Price





SASKATOON - SEPTEMBER 2024

HPI Benchmark Attributes

	Composite
Bedrooms, Above Ground	3
Bathrooms, Full	2
Bathrooms, Half	0
Garage	Attached, Single width
Gross Living Area, Above Ground (Sq. Ft.)	1167
Lot Size	-
Fireplaces, Number of	0
Year Built	1988
September 2024 Benchmark Price	\$401,800
Detached Share of Sales, Last 3 Years	61%
Semi-Detached Share of Sales, Last 3 Years	2%
Apartment Share of Sales, Last 3 Years	18%
Townhouse Share of Sales, Last 3 Years	15%

	Detached	1 Storey	2 Storey
Bedrooms, Above Ground	3	3	3
Bathrooms, Full	2	2	2
Bathrooms, Half	0	0	1
Garage	Attached, Double width	Attached, Single width	Attached, Double width
Gross Living Area, Above Ground (Sq. Ft.)	1243	1102	1495
Lot Size	5657	5865	5231
Fireplaces, Number of	0	0	0
Year Built	1979	1971	2007
September 2024 Benchmark Price	\$458,900	\$393,300	\$535,800
Share of Total Sales, Last 3 Years	61%	36%	31%

	Semi-Detached	Row/Townhouse	Apartment
Bedrooms, Above Ground	3	3	2
Bathrooms, Full	2	1	1
Bathrooms, Half	1	1	0
Garage	Attached, Single width	Attached, Single width	-
Gross Living Area, Above Ground (Sq. Ft.)	1155	1106	927
Fireplaces, Number of	0	0	0
Year Built	2013	2010	1993
September 2024 Benchmark Price	\$495,400	\$332,800	\$244,100
Share of Total Sales, Last 3 Years	2%	15%	18%

SASKATOON

	Sales	Y/Y%	New Listings	Y/Y%	S/NL Ratio	Inventory	Y/Y%	Months of Supply	DOM	SP/PLP	Benchmark Price	Y/Y%	Median Price	Y/Y%	Average Price	Y/Y%	Index
Jan-13	223	-10%	579	12%	0.39	1,035	4%	4.64	45	98.2%	314,800	5.8%	325,000	5.5%	337,625	5.7%	245.7
Feb-13	267	-18%	479	-16%	0.56	1,043	0%	3.91	39	98.7%	317,100	5.7%	308,500	-0.5%	329,711	5.6%	247.5
Mar-13	346	-5%	617	-5%	0.56	1,118	0%	3.23	37	98.4%	318,800	4.4%	318,750	2.8%	334,868	0.6%	248.9
Apr-13	432	5%	758	3%	0.57	1,182	-2%	2.74	34	98.1%	319,800	4.2%	339,950	0.9%	357,725	4.2%	249.6
May-13	427	-8%	906	12%	0.47	1,379	4%	3.23	30	98.3%	322,600	4.9%	339,900	7.9%	356,616	5.9%	251.8
Jun-13	472	7%	760	4%	0.62	1,380	5%	2.92	40	98.3%	321,500	3.6%	328,200	4.2%	351,157	5.0%	251.0
Jul-13	465	5%	795	11%	0.58	1,403	5%	3.02	35	98.1%	320,200	3.0%	324,900	3.1%	341,838	2.5%	250.0
Aug-13	381	0%	750	21%	0.51	1,440	9%	3.78	39	98.1%	322,400	2.9%	337,000	3.7%	343,148	0.9%	251.7
Sep-13	360	8%	749	28%	0.48	1,433	13%	3.98	39	97.9%	323,700	4.6%	327,000	5.5%	343,111	5.0%	252.7
Oct-13	378	12%	709	18%	0.53	1,389	15%	3.67	37	97.7%	320,000	2.1%	338,950	6.1%	345,026	2.8%	249.8
Nov-13	294	5%	473	5%	0.62	1,271	15%	4.32	52	97.3%	320,900	4.0%	319,920	-5.2%	344,763	-0.6%	250.5
Dec-13	186	2%	334	33%	0.56	1,100	21%	5.91	48	97.8%	322,800	2.8%	330,450	3.3%	343,202	1.5%	252.0
2014	4,231	0%	7,909	9%	0.53	1,264	7%	3.59	39	98.1%	320,383	4.0%	329,500	3.9%	345,208	3.4%	250.1
Jan-14	228	2%	639	10%	0.36	1,233	19%	5.41	51	97.7%	322,600	2.5%	331,250	1.9%	354,497	5.0%	251.8
Feb-14	299	12%	578	21%	0.52	1,270	22%	4.25	43	97.8%	326,400	2.9%	337,400	9.4%	350,692	6.4%	254.8
Mar-14	386	12%	772	25%	0.50	1,385	24%	3.59	44	98.2%	325,800	2.2%	349,900	9.8%	353,242	5.5%	254.3
Apr-14	455	5%	886	17%	0.51	1,501	27%	3.30	41	98.1%	327,800	2.5%	341,000	0.3%	353,550	-1.2%	255.9
May-14	498	17%	954	5%	0.52	1,623	18%	3.26	36	97.7%	329,700	2.2%	336,800	-0.9%	355,677	-0.3%	257.4
Jun-14	533	13%	917	21%	0.58	1,625	18%	3.05	33	97.9%	329,100	2.4%	350,000	6.6%	360,974	2.8%	256.9
Jul-14	424	-9%	945	19%	0.45	1,695	21%	4.00	37	97.9%	332,300	3.8%	351,500	8.2%	364,439	6.6%	259.4
Aug-14	403	6%	779	4%	0.52	1,679	17%	4.17	42	97.8%	331,800	2.9%	335,000	-0.6%	352,862	2.8%	259.0
Sep-14	431	20%	910	21%	0.47	1,658	16%	3.85	40	97.8%	328,700	1.5%	342,000	4.6%	355,084	3.5%	256.6
Oct-14	385	2%	776	9%	0.50	1,593	15%	4.14	44	97.7%	329,900	3.1%	345,000	1.8%	361,381	4.7%	257.5
Nov-14	292	-1%	611	29%	0.48	1,568	23%	5.37	40	97.6%	323,100	3.5%	349,900	9.4%	360,187	4.5%	259.3
Dec-14	216	16%	345	3%	0.63	1,269	15%	5.88	48	97.6%	324,700	0.6%	337,000	2.0%	348,453	1.6%	253.5
2015	4,550	8%	9,112	15%	0.50	1,508	19%	3.98	40	97.8%	328,408	2.5%	342,000	3.8%	356,436	3.3%	256.4
Jan-15	183	-20%	731	14%	0.25	1,486	21%	8.12	55	98.0%	332,300	3.0%	330,000	-0.4%	354,724	0.1%	259.4
Feb-15	241	-19%	659	14%	0.37	1,571	24%	6.52	49	97.9%	333,200	2.1%	338,000	0.2%	364,554	4.0%	260.1
Mar-15	349	-10%	888	15%	0.39	1,785	29%	5.11	50	97.9%	329,600	1.2%	330,000	-5.7%	340,420	-3.6%	257.3
Apr-15	397	-13%	961	8%	0.41	1,968	31%	4.96	45	98.0%	327,900	0.0%	342,500	0.4%	350,853	-0.8%	256.0
May-15	419	-16%	1,001	5%	0.42	2,087	29%	4.98	44	98.0%	328,400	-0.4%	355,800	5.6%	366,474	3.0%	256.4
Jun-15	464	-13%	1,022	11%	0.45	2,121	31%	4.57	42	97.9%	329,500	0.1%	350,000	0.0%	361,328	0.1%	257.2
Jul-15	446	5%	925	-2%	0.48	2,082	23%	4.67	48	97.4%	330,700	-0.5%	345,000	-1.8%	359,395	-1.4%	258.2
Aug-15	328	-19%	847	9%	0.39	2,053	22%	6.26	50	97.4%	327,000	-1.4%	348,425	4.0%	352,239	-0.2%	255.3
Sep-15	362	-16%	973	7%	0.37	2,056	24%	5.68	44	97.3%	322,700	-1.8%	330,000	-3.5%	333,524	-6.1%	251.9
Oct-15	291	-24%	782	1%	0.37	2,004	26%	6.89	50	97.4%	325,500	-1.3%	346,500	0.4%	354,713	-1.8%	254.1
Nov-15	281	-4%	639	5%	0.44	1,870	19%	6.65	51	97.4%	326,800	-1.6%	350,000	0.0%	360,679	0.1%	255.1
Dec-15	196	-9%	402	17%	0.49	1,527	20%	7.79	53	97.1%	322,400	-0.7%	342,500	1.6%	352,417	1.1%	251.7
2016	3,957	-13%	9,830	8%	0.40	1,884	25%	5.71	48	97.7%	328,000	-0.1%	343,000	0.3%	354,380	-0.6%	256.1
Jan-16	175	-4%	688	-6%	0.25	1,644	11%	9.39	50	96.9%	320,300	-3.6%	335,000	1.5%	352,959	-0.5%	250.0
Feb-16	230	-5%	728	10%	0.32	1,803	15%	7.84	53	96.7%	322,500	-3.2%	323,000	-4.2%	332,342	-8.8%	251.8
Mar-16	314	-10%	840	-5%	0.37	1,891	6%	6.02	47	97.2%	321,000	-2.6%	333,950	1.2%	349,115	2.6%	250.6
Apr-16	382	-4%	953	-1%	0.40	2,014	2%	5.27	46	97.7%	324,400	-1.1%	330,800	-3.4%	343,528	-2.1%	253.2
May-16	394	-6%	973	-3%	0.40	2,137	2%	5.42	42	97.2%	326,500	-0.6%	336,200	-5.5%	354,334	-3.3%	254.9
Jun-16	393	-15%	951	-7%	0.41	2,167	2%	5.51	47	97.6%	327,100	-0.7%	336,000	-4.0%	353,599	-2.1%	255.3
Jul-16	373	-16%	792	-14%	0.47	2,102	1%	5.64	49	97.1%	325,700	-1.5%	345,000	0.0%	367,366	2.2%	254.3
Aug-16	375	14%	837	-1%	0.45	2,061	0%	5.50	50	97.1%	323,200	-1.2%	335,000	-3.9%	352,718	0.1%	252.3
Sep-16	325	-10%	789	-19%	0.41	1,938	-6%	5.96	51	97.3%	321,800	-0.3%	344,900	4.5%	353,382	6.0%	251.2
Oct-16	314	8%	769	-2%	0.41	1,858	-7%	5.92	50	97.0%	319,700	-1.8%	330,000	-4.8%	343,280	-3.2%	249.6
Nov-16	251	-11%	657	3%	0.38	1,782	-5%	7.10	49	96.9%	313,200	-4.2%	337,000	-3.7%	350,389	-2.9%	244.5
Dec-16	189	-4%	397	-1%	0.48	1,508	-1%	7.98	49	96.8%	315,100	-2.3%	335,000	-2.2%	341,071	-3.2%	246.0
2017	3,715	-6%	9,374	-5%	0.40	1,909	1%	6.17	48	97.2%	321,708	-1.9%	335,000	-2.3%	350,464	-1.1%	251.1
Jan-17	187	7%	726	6%	0.26	1,658	1%	8.87	54	96.8%	320,200	0.0%	320,000	-4.5%	341,573	-3.2%	250.0
Feb-17	227	-1%	622	-15%	0.36	1,736	-4%	7.65	54	96.7%	317,300	-1.6%	320,000	-0.9%	338,785	1.9%	247.7
Mar-17	310	-1%	854	2%	0.36	1,927	2%	6.22	48	97.1%	319,800	-0.4%	322,825	-3.3%	345,210	-1.1%	249.6
Apr-17	317	-17%	854	-10%	0.37	2,066	3%	6.52	49	97.4%	318,600	-1.8%	339,900	2.8%	361,445	5.2%	248.7
May-17	423	7%	1,039	7%	0.41	2,198	3%	5.20	48	97.1%	321,800	-1.4%	344,000	2.3%	354,289	0.0%	251.2
Jun-17	394	0%	960	1%	0.41	2,235	3%	5.67	44	97.1%	319,200	-2.4%	330,500	-1.6%	350,066	-1.0%	249.2
Jul-17	313	-16%	800	1%	0.39	2,264	8%	7.23	48	96.7%	315,600	-3.1%	325,000	-5.8%	343,068	-6.6%	246.4
Aug-17	330	-12%	812	-3%	0.41	2,228	8%	6.75	54	97.2%	317,700	-1.7%	334,200	-0.2%	338,158	-4.1%	248.0
Sep-17	261	-20%	780	-1%	0.33	2,146	11%	8.22	53	96.7%	316,300	-1.7%	322,000	-6.6%	344,198	-2.6%	246.9
Oct-17	290	-8%	721	-6%	0.40	2,009	8%	6.93	52	96.8%	312,100	-2.4%	330,000	0.0%	329,992	-3.9%	243.6
Nov-17	261	4%	587	-11%	0.44	1,895	6%	7.26	56	96.4%	309,600	-1.1%	320,000	-5.0%	341,301	-2.6%	241.7
Dec-17	204	8%	324	-18%	0.63	1,555	3%	7.62	60	96.0%	304,300	-3.4%	323,500	-3.4%	338,463	-0.8%	237.5
2018	3,517	-5%	9,079	-3%	0.39	1,993	4%	6.80	51	96.9%	316,042	-1.8%	329,000	-1.8%	344,838	-1.6%	246.7
Jan-18	202	8%	622	-14%	0.32	1,569	-5%	7.77	66	96.6%	307,700	-3.9%	330,000	3.1%	344,720	0.9%	240.2
Feb-18	210	-7%	526	-15%	0.40	1,615	-7%	7.69	57	96.4%	312,300	-1.6%	320,000	0.0%	330,549	-2.4%	243.8
Mar-18	233	-25%	671	-21%	0.35	1,722	-11%	7.39	64	96.7%	317,100	-0.8%	317,500	-1.6%	328,208	-4.9%	247.5
Apr-18	337	6%	794	-7%	0.42	1,841	-11%	5.46	52	96.8%	315,000	-1.1%	320,000	-5.9%	338,170	-6.4%	245.9
May-18	364	-14%	944	-9%	0.39	2,031	-8%	5.58	46	97.0%	318,500	-1.0%	320,000	-7.0%	332,543	-6.1%	248.6
Jun-18	351	-11%	877	-9%	0.40	2,145	-4%	6.11	47	97.0%	309,000	-3.2%	320,909	-2.9%	331,459	-5.3%	241.2
Jul-18	390	25%	712	-11%	0.55	2,080	-8%	5.33	46	97.							

SASKATOON

	Sales	Y/Y%	New Listings	Y/Y%	S/NL Ratio	Inventory	Y/Y%	Months of Supply	DOM	SP/PLP	Benchmark Price	Y/Y%	Median Price	Y/Y%	Average Price	Y/Y%	Index
Jan-19	201	0%	556	-11%	0.36	1,452	-7%	7.22	60	95.8%	300,700	-2.3%	285,000	-13.6%	301,368	-12.6%	234.7
Feb-19	211	0%	481	-9%	0.44	1,475	-9%	6.99	56	97.0%	304,500	-2.5%	321,900	0.6%	338,268	2.3%	237.7
Mar-19	257	10%	703	5%	0.37	1,643	-5%	6.39	57	96.7%	304,800	-3.9%	317,000	-0.2%	316,737	-3.5%	237.9
Apr-19	378	12%	777	-2%	0.49	1,786	-3%	4.72	56	97.0%	309,000	-1.9%	332,000	3.8%	342,842	1.4%	241.2
May-19	421	16%	916	-3%	0.46	1,949	-4%	4.63	47	97.2%	310,200	-2.6%	326,000	1.9%	334,016	0.4%	242.2
Jun-19	375	7%	789	-10%	0.48	1,987	-7%	5.30	49	96.7%	307,500	-0.5%	320,000	-0.3%	338,142	2.0%	240.0
Jul-19	390	0%	752	6%	0.52	1,948	-6%	4.99	52	96.8%	311,400	-1.0%	316,000	-2.8%	331,757	-1.8%	243.1
Aug-19	325	-2%	727	-4%	0.45	1,961	-4%	6.03	56	96.8%	311,900	0.0%	309,000	-2.4%	323,110	-2.5%	243.5
Sep-19	307	13%	720	11%	0.43	1,904	-5%	6.20	55	96.6%	307,200	-1.6%	329,900	4.7%	350,946	9.8%	239.8
Oct-19	304	6%	599	1%	0.51	1,725	-5%	5.67	53	97.0%	306,500	-2.2%	302,500	-4.4%	318,022	-2.0%	239.3
Nov-19	243	19%	451	-16%	0.54	1,584	-8%	6.52	57	96.8%	302,700	-1.2%	325,000	-2.4%	332,945	-2.8%	236.3
Dec-19	203	23%	304	-3%	0.67	1,325	-6%	6.53	65	96.3%	303,700	-1.5%	316,635	-2.6%	333,857	-1.2%	237.1
2020	3,615	8%	7,775	-3%	0.46	1,728	-6%	5.74	54	96.8%	306,675	-1.8%	318,000	-0.6%	331,359	-0.5%	239.4
Jan-20	219	9%	571	3%	0.38	1,416	-2%	6.47	64	96.9%	311,900	3.7%	319,500	12.1%	326,278	8.3%	243.5
Feb-20	230	9%	468	-3%	0.49	1,444	-2%	6.28	72	96.5%	312,300	2.6%	318,750	-1.0%	320,249	-5.3%	243.8
Mar-20	273	6%	602	-14%	0.45	1,482	-10%	5.43	55	97.0%	311,600	2.2%	335,000	5.7%	346,849	9.5%	243.2
Apr-20	212	-44%	488	-37%	0.43	1,462	-18%	6.90	56	96.2%	309,400	0.1%	320,000	-3.6%	339,104	-1.1%	241.5
May-20	326	-23%	755	-18%	0.43	1,591	-18%	4.88	48	96.8%	316,000	1.9%	338,000	3.7%	359,304	7.6%	246.7
Jun-20	513	37%	829	5%	0.62	1,599	-20%	3.12	42	97.4%	315,700	2.7%	329,900	3.1%	334,937	-0.9%	246.4
Jul-20	547	40%	816	9%	0.67	1,574	-19%	2.88	43	97.7%	324,400	4.2%	339,000	7.3%	350,801	5.7%	253.2
Aug-20	460	42%	780	7%	0.59	1,552	-21%	3.37	42	97.6%	323,700	3.8%	335,500	8.6%	353,925	9.5%	252.7
Sep-20	429	40%	810	13%	0.53	1,566	-18%	3.65	40	97.4%	326,200	6.2%	345,000	4.6%	357,935	2.0%	254.6
Oct-20	429	41%	622	4%	0.69	1,441	-16%	3.36	42	97.3%	320,100	4.4%	330,000	9.1%	351,831	10.6%	249.9
Nov-20	358	47%	423	-6%	0.85	1,218	-23%	3.40	41	97.2%	322,300	6.5%	314,500	-3.2%	326,120	-2.1%	251.6
Dec-20	273	34%	347	-14%	0.79	996	-25%	3.65	49	97.7%	325,800	7.3%	333,000	5.2%	345,579	3.5%	254.3
2021	4,269	18%	7,511	-3%	0.57	1,445	-16%	4.06	47	97.2%	318,283	3.8%	330,000	3.8%	344,560	4.0%	248.5
Jan-21	277	26%	557	-2%	0.50	1,080	-24%	3.90	55	97.5%	326,700	4.7%	312,000	-2.3%	348,359	6.8%	255.0
Feb-21	352	53%	542	16%	0.65	1,125	-22%	3.20	43	97.9%	337,200	8.0%	340,000	6.7%	353,542	10.4%	263.2
Mar-21	567	108%	926	54%	0.61	1,297	-12%	2.29	36	98.6%	340,700	9.3%	352,900	5.3%	362,165	4.4%	266.0
Apr-21	549	159%	957	96%	0.57	1,449	-1%	2.64	33	99.3%	345,300	11.6%	362,500	13.3%	373,170	10.0%	269.6
May-21	572	75%	1,016	35%	0.56	1,626	2%	2.84	34	98.8%	350,000	10.8%	369,900	9.4%	387,139	7.7%	273.2
Jun-21	605	18%	825	0%	0.73	1,558	-3%	2.58	37	98.6%	352,700	11.7%	350,000	6.1%	364,486	8.8%	275.3
Jul-21	487	-11%	758	-7%	0.64	1,560	-1%	3.20	42	98.4%	351,000	8.2%	340,000	0.3%	360,951	2.9%	274.0
Aug-21	491	7%	734	-6%	0.67	1,494	-4%	3.04	40	98.1%	348,100	7.5%	330,000	-1.6%	356,673	0.8%	271.7
Sep-21	396	-8%	651	-20%	0.61	1,436	-8%	3.63	43	97.9%	347,900	6.7%	325,250	-5.7%	341,937	-4.5%	271.6
Oct-21	425	-1%	587	-6%	0.72	1,300	-10%	3.06	43	97.9%	346,000	8.1%	356,500	8.0%	375,628	6.8%	270.1
Nov-21	413	15%	439	4%	0.94	1,098	-10%	2.66	47	98.0%	350,100	8.6%	365,000	16.1%	383,855	17.7%	273.3
Dec-21	267	-2%	293	-16%	0.91	882	-11%	3.30	45	98.1%	353,800	8.6%	345,000	3.6%	366,132	5.9%	276.2
2022	5,401	27%	8,285	10%	0.65	1,325	-8%	2.94	40	98.4%	345,792	8.6%	349,900	6.0%	365,741	6.1%	269.9
Jan-22	243	-12%	430	-23%	0.57	906	-16%	3.73	51	97.8%	354,100	8.4%	343,900	10.2%	359,587	3.2%	276.4
Feb-22	318	-10%	512	-6%	0.62	966	-14%	3.04	45	98.8%	360,700	7.0%	349,950	2.9%	358,671	1.5%	281.6
Mar-22	491	-13%	733	-21%	0.67	1,038	-20%	2.11	42	98.9%	365,700	7.3%	358,900	1.7%	370,137	2.2%	285.5
Apr-22	461	-16%	665	-31%	0.69	1,094	-24%	2.37	35	99.5%	366,600	6.2%	350,000	-3.4%	365,001	-2.2%	286.2
May-22	536	-6%	857	-16%	0.63	1,184	-27%	2.21	33	99.6%	375,300	7.2%	352,000	-4.8%	375,981	-2.9%	293.0
Jun-22	532	-12%	946	15%	0.56	1,333	-14%	2.51	30	99.8%	375,100	6.4%	363,500	3.9%	391,557	7.4%	292.8
Jul-22	448	-8%	711	-6%	0.63	1,341	-14%	2.99	31	99.1%	378,400	7.8%	336,625	-1.0%	363,504	0.7%	295.4
Aug-22	440	-10%	658	-10%	0.67	1,267	-15%	2.88	36	98.3%	369,400	6.1%	363,983	10.3%	380,131	6.6%	288.4
Sep-22	328	-17%	590	-9%	0.56	1,247	-13%	3.80	39	97.6%	364,100	4.7%	346,600	6.6%	374,298	9.5%	284.2
Oct-22	319	-25%	510	-13%	0.63	1,178	-9%	3.69	41	97.2%	364,800	5.4%	322,000	-9.7%	340,466	-9.4%	284.8
Nov-22	266	-36%	418	-5%	0.64	1,101	0%	4.14	44	97.2%	357,300	2.1%	335,500	-8.1%	349,336	-9.0%	278.9
Dec-22	202	-24%	231	-21%	0.87	897	2%	4.44	46	96.8%	350,400	-1.0%	334,800	-3.0%	371,646	1.5%	273.5
2023	4,584	-15%	7,261	-12%	0.63	1,129	-15%	2.96	38	98.6%	365,158	5.6%	349,900	0.0%	368,838	0.8%	285.1
Jan-23	201	-17%	414	-4%	0.49	930	3%	4.63	56	97.3%	360,700	1.9%	327,000	-4.9%	347,570	-3.3%	281.6
Feb-23	253	-20%	426	-17%	0.59	961	-1%	3.80	49	98.0%	363,500	0.8%	350,000	0.0%	356,597	-0.6%	283.8
Mar-23	397	-19%	582	-21%	0.68	973	-6%	2.45	46	98.3%	370,400	1.3%	353,800	-1.4%	376,608	1.7%	289.1
Apr-23	406	-12%	669	1%	0.61	1,066	-3%	2.63	40	98.3%	369,800	0.9%	336,300	-3.9%	366,626	0.4%	288.7
May-23	537	0%	765	-11%	0.70	1,106	-7%	2.06	33	99.1%	375,600	0.1%	360,000	2.3%	389,706	3.7%	293.2
Jun-23	540	2%	790	-16%	0.68	1,126	-16%	2.09	35	98.7%	376,800	0.5%	359,700	-1.0%	388,626	-0.7%	294.1
Jul-23	496	11%	703	-1%	0.71	1,152	-14%	2.32	36	98.9%	379,500	0.3%	355,000	5.5%	375,111	3.2%	296.3
Aug-23	526	20%	657	0%	0.80	1,052	-17%	2.00	36	98.8%	373,400	1.1%	350,000	-3.8%	372,825	-1.9%	291.5
Sep-23	373	14%	574	-3%	0.65	1,030	-17%	2.76	37	98.7%	377,100	3.6%	353,000	1.8%	370,647	-1.0%	294.4
Oct-23	380	19%	513	1%	0.74	945	-20%	2.49	36	98.3%	377,700	3.5%	365,000	13.4%	386,112	13.4%	294.8
Nov-23	313	18%	429	3%	0.73	875	-21%	2.80	38	97.9%	374,700	4.9%	349,900	4.3%	366,095	4.8%	292.5
Dec-23	228	13%	248	7%	0.92	735	-18%	3.22	42	98.3%	369,100	5.3%	356,825	6.6%	373,312	0.4%	288.1
2023	4,650	1%	6,770	-7%	0.69	996	-12%	2.57	39	98.5%	372,358	2.0%	351,200	0.4%	375,142	1.7%	290.7
Jan-24	245	22%	364	-12%	0.67	724	-22%	2.96	45	98.4%	375,500	4.1%	365,000	11.6%	385,259	10.8%	293.1
Feb-24	308	22%	434	2%	0.71	746	-22%	2.42	43	98.7%	383,000	5.4%	360,000	2.9%	366,305	2.7%	299.0
Mar-24	363	-9%	538	-8%	0.67	798	-18%	2.20	42	99.4%	390,800	5.5%	395,000	11.6%	403,397	7.1%	305.1
Apr-24	521	28%	727	9%	0.72	858	-20%	1.65	32	99.8%	394,500	6.7%	373,500	11.1%	394,402	7.6%	308.0
May-24	572	7%	799	4%	0.72	908	-18%	1.59	29	100.1%	397,200	5.8%	390,000	8.3%	396,064	1.6%	310.1
Jun-24	539	0%	668	-15%	0.81	873	-22%	1.62	31	99.9%	403,500	7.1%	390,000	8.4%	401,813	3.4%	315.0
Jul-24	520	5%	706	0%	0.74	867	-25%	1.67	29	9							

SASKATOON

	Sales	Y/Y%	New Listings	Y/Y%	S/NL Ratio	Inventory	Y/Y%	Months of Supply	DOM	SP/LP	Benchmark Price	Y/Y%	Median Price	Y/Y%	Average Price	Y/Y%	Index
Jan-13	156	-13%	365	5%	0.43	662	5%	4.24	44	98.1%	339,600	6.1%	352,450	10.1%	369,339	7.7%	254.4
Feb-13	172	-25%	336	-14%	0.51	682	2%	3.97	38	98.6%	342,700	5.9%	340,500	3.8%	362,090	7.7%	256.7
Mar-13	230	-8%	428	-1%	0.54	749	6%	3.26	35	98.5%	346,400	4.9%	349,500	6.4%	366,292	4.7%	259.5
Apr-13	309	3%	510	-2%	0.61	783	1%	2.53	31	98.2%	346,300	4.4%	369,661	3.8%	384,428	4.8%	259.4
May-13	311	-10%	647	13%	0.48	902	7%	2.90	27	98.4%	349,300	5.3%	368,000	7.3%	383,910	6.2%	261.6
Jun-13	319	5%	522	-2%	0.61	902	3%	2.83	33	98.1%	347,300	3.7%	359,900	4.3%	377,038	3.2%	260.1
Jul-13	320	2%	542	12%	0.59	912	4%	2.85	33	98.0%	346,000	3.0%	355,000	4.7%	369,839	1.9%	259.2
Aug-13	266	3%	555	29%	0.48	955	10%	3.59	36	98.1%	349,100	2.8%	365,000	5.8%	375,031	2.2%	261.5
Sep-13	251	1%	546	28%	0.46	964	15%	3.84	37	97.9%	351,600	5.0%	370,000	11.6%	377,933	8.9%	263.4
Oct-13	282	18%	502	21%	0.56	916	16%	3.25	35	97.6%	346,500	2.2%	365,000	5.2%	371,866	3.1%	259.6
Nov-13	202	-3%	315	-1%	0.64	817	15%	4.04	47	97.6%	347,800	4.4%	357,750	-0.3%	375,744	3.3%	260.5
Dec-13	130	20%	225	32%	0.58	703	16%	5.41	47	97.8%	350,400	3.2%	358,500	0.0%	364,495	-1.0%	262.5
2014	2,948	-1%	5,493	9%	0.54	829	8%	3.37	36	98.1%	346,917	4.2%	360,000	5.9%	374,397	4.5%	259.9
Jan-14	149	-4%	395	8%	0.38	758	15%	5.09	50	97.7%	350,100	3.1%	369,900	5.0%	397,997	7.8%	262.2
Feb-14	200	16%	379	13%	0.53	761	12%	3.81	41	97.5%	354,000	3.3%	381,500	12.0%	383,195	5.8%	265.2
Mar-14	258	12%	528	23%	0.49	858	15%	3.33	41	98.3%	353,100	1.9%	380,950	9.0%	387,126	5.7%	264.5
Apr-14	300	-3%	593	16%	0.51	930	19%	3.10	37	97.9%	355,500	2.7%	375,000	1.4%	382,422	-0.5%	266.3
May-14	340	9%	653	1%	0.52	1,017	13%	2.99	33	97.9%	358,500	2.6%	373,950	1.6%	388,895	1.3%	268.5
Jun-14	370	16%	611	17%	0.61	1,005	11%	2.72	31	98.0%	357,600	3.0%	386,000	7.3%	397,053	5.3%	267.9
Jul-14	286	-11%	653	20%	0.44	1,069	17%	3.74	32	97.9%	360,800	4.3%	383,200	7.9%	393,345	6.4%	270.3
Aug-14	268	1%	580	5%	0.46	1,084	14%	4.04	40	97.9%	360,300	3.2%	371,950	1.9%	396,281	5.7%	269.9
Sep-14	303	21%	646	18%	0.47	1,067	11%	3.52	37	97.9%	357,200	1.6%	373,000	0.8%	384,462	1.7%	267.6
Oct-14	279	-1%	524	4%	0.53	1,003	9%	3.59	38	97.6%	359,000	3.6%	365,000	0.0%	389,706	4.8%	268.9
Nov-14	197	-2%	372	18%	0.53	941	15%	4.78	36	97.8%	362,200	4.1%	374,900	4.8%	389,053	3.5%	271.3
Dec-14	140	8%	218	-3%	0.64	743	6%	5.31	43	97.3%	352,600	0.6%	372,000	3.8%	387,861	6.4%	264.1
2015	3,090	5%	6,152	12%	0.50	936	13%	3.64	37	97.8%	356,742	2.8%	375,000	4.2%	389,820	4.1%	267.2
Jan-15	125	-16%	451	14%	0.28	856	13%	6.85	51	97.7%	361,900	3.4%	376,596	1.8%	387,253	-2.7%	271.1
Feb-15	161	-20%	415	9%	0.39	887	17%	5.51	42	97.8%	362,500	2.4%	385,000	0.9%	408,468	6.6%	271.5
Mar-15	240	-7%	574	9%	0.42	1,011	18%	4.21	44	97.9%	358,500	1.5%	357,950	-6.0%	373,998	-3.4%	268.5
Apr-15	271	-10%	654	10%	0.41	1,140	23%	4.21	39	98.0%	357,400	0.5%	375,000	0.0%	382,730	0.1%	267.7
May-15	280	-18%	657	1%	0.43	1,225	20%	4.38	41	98.0%	357,300	-0.3%	395,500	5.8%	403,213	3.7%	267.6
Jun-15	332	-10%	707	16%	0.47	1,278	27%	3.85	38	98.0%	358,400	0.2%	372,500	-3.5%	386,377	-2.7%	268.5
Jul-15	298	4%	582	-11%	0.51	1,241	16%	4.16	43	97.5%	359,900	-0.2%	372,500	-2.8%	403,005	2.5%	269.6
Aug-15	219	-18%	577	-1%	0.38	1,246	15%	5.69	47	97.5%	355,500	-1.3%	381,000	2.4%	393,096	-0.8%	266.3
Sep-15	266	-12%	657	2%	0.40	1,209	13%	4.55	38	97.3%	351,100	-1.7%	353,750	-5.2%	361,851	-5.9%	263.0
Oct-15	202	-28%	512	-2%	0.39	1,180	18%	5.84	42	97.5%	355,100	-1.1%	385,000	5.5%	386,515	-0.8%	266.0
Nov-15	219	11%	390	5%	0.56	1,057	12%	4.83	46	97.5%	356,600	-1.5%	374,900	0.0%	380,090	-2.3%	267.1
Dec-15	138	-1%	258	18%	0.53	859	16%	6.22	52	97.2%	350,200	-0.7%	371,250	-0.2%	386,806	-0.3%	262.3
2016	2,751	-11%	6,434	5%	0.43	1,099	17%	4.79	43	97.7%	357,033	0.1%	375,000	0.0%	387,480	-0.6%	267.4
Jan-16	125	0%	407	-10%	0.31	905	6%	7.24	44	97.0%	349,800	-3.3%	373,500	-0.8%	387,646	0.1%	262.0
Feb-16	153	-5%	429	3%	0.36	975	10%	6.37	53	96.5%	352,400	-2.8%	355,000	-7.8%	372,416	-8.8%	264.0
Mar-16	226	-6%	550	-4%	0.41	1,011	0%	4.47	47	97.3%	349,300	-2.6%	365,000	2.0%	381,506	2.0%	261.6
Apr-16	273	1%	613	-6%	0.45	1,112	-2%	4.07	40	97.9%	353,700	-1.0%	359,900	-4.0%	377,672	-1.3%	264.9
May-16	273	-3%	636	-3%	0.43	1,223	0%	4.48	32	97.4%	356,500	-0.2%	370,000	-6.4%	387,669	-3.9%	267.0
Jun-16	281	-15%	592	-16%	0.47	1,216	-5%	4.33	42	97.7%	357,400	-0.3%	367,000	-1.5%	386,557	0.0%	267.7
Jul-16	262	-12%	505	-13%	0.52	1,168	-6%	4.46	42	97.1%	355,000	-1.4%	383,950	3.1%	404,801	0.4%	265.9
Aug-16	250	14%	558	-3%	0.45	1,177	-6%	4.71	45	97.3%	352,500	-0.8%	375,750	-1.4%	386,538	-1.7%	264.0
Sep-16	238	-11%	525	-20%	0.45	1,097	-9%	4.61	43	97.3%	351,200	0.0%	360,121	1.8%	387,557	7.1%	263.1
Oct-16	217	7%	513	0%	0.42	1,061	-10%	4.89	41	97.1%	349,500	-1.6%	368,000	-4.4%	384,194	-0.6%	261.8
Nov-16	175	-20%	395	1%	0.44	1,000	-5%	5.41	43	96.9%	342,000	-4.1%	365,000	-2.6%	388,153	2.1%	256.2
Dec-16	131	-5%	246	-5%	0.53	844	-2%	6.44	44	96.6%	344,800	-1.5%	345,000	-7.1%	360,324	-6.8%	258.3
2017	2,604	-5%	5,969	-7%	0.44	1,066	-3%	4.91	43	97.2%	351,175	-1.6%	368,000	-1.9%	385,041	-0.6%	263.0
Jan-17	135	8%	446	10%	0.30	915	1%	6.78	46	97.1%	351,200	0.4%	340,000	-9.0%	366,972	-5.3%	261.0
Feb-17	160	5%	396	-8%	0.40	949	-3%	5.93	53	96.6%	346,900	-1.6%	359,250	1.2%	373,207	0.2%	259.9
Mar-17	195	-14%	562	2%	0.35	1,094	8%	5.61	39	97.2%	349,900	0.2%	375,000	2.7%	393,040	3.0%	262.1
Apr-17	218	-20%	548	-11%	0.40	1,148	3%	5.27	43	97.8%	347,800	-1.7%	367,750	2.2%	394,731	4.5%	260.5
May-17	296	8%	706	11%	0.42	1,266	4%	4.28	43	97.4%	352,000	-1.3%	370,000	0.0%	389,928	0.6%	263.7
Jun-17	285	1%	619	5%	0.46	1,290	6%	4.53	37	97.3%	348,700	-2.4%	360,000	-1.9%	381,106	-1.4%	261.2
Jul-17	224	-15%	553	10%	0.41	1,321	13%	5.90	41	96.8%	344,500	-3.0%	367,000	-4.4%	380,183	-6.1%	258.1
Aug-17	225	-10%	553	-1%	0.41	1,315	12%	5.84	45	97.5%	347,400	-1.4%	365,000	-2.9%	375,842	-2.8%	260.2
Sep-17	182	-24%	537	2%	0.34	1,308	19%	7.19	45	97.0%	345,100	-1.7%	364,500	1.2%	385,248	-0.6%	258.5
Oct-17	213	-2%	471	-8%	0.45	1,202	13%	5.64	47	97.0%	340,200	-2.7%	353,500	-3.9%	357,466	-7.0%	254.8
Nov-17	196	12%	384	-3%	0.51	1,105	11%	5.64	52	96.6%	339,100	-0.8%	356,250	-2.4%	373,329	-3.8%	254.0
Dec-17	144	10%	190	-23%	0.76	887	5%	6.16	58	96.2%	332,100	-3.7%	364,950	5.8%	377,163	4.7%	248.8
2018	2,473	-5%	5,965	0%	0.41	1,150	8%	5.58	45	97.1%	345,408	-1.6%	363,500	-1.2%	379,882	-1.3%	258.7
Jan-18	151	12%	340	-24%	0.44	855	-7%	5.66	61	96.9%	337,700	-3.8%	352,000	3.5%	369,031	0.6%	253.0
Feb-18	140	-13%	336	-15%	0.42	894	-6%	6.39	53	96.6%	343,800	-0.9%	350,000	-2.6%	367,727	-1.5%	257.5
Mar-18	162	-17%	418	-26%	0.39	956	-13%	5.90	53	96.9%	349,000	-0.3%	353,950	-5.6%	371,204	-5.6%	261.4
Apr-18	254	17%	474	-14%	0.54	994	-13%	3.91	50	97.0%	345,800	-0.6%	340,500	-7.4%	365,878	-7.3%	259.0
May-18	257	-13%	589	-17%	0.44	1,114	-12%	4.33	39	97.3%	350,100	-0.5%	357,400	-3.4%	370,723	-4.9%	262.2
Jun-18	235	-18%	551	-11%	0.43	1,201	-7%	5.11	40	97.2%	337,900	-3.1%	363,000	0.8%	373,868	-1.9%	253.1
Jul-18	261	17%	470	-15%	0.56	1,178	-11%	4.51	45	97.1%	345,800	0.4%	357,000	-2.7%	384,427		

SASKATOON

	Sales	Y/Y%	New Listings	Y/Y%	S/NL Ratio	Inventory	Y/Y%	Months of Supply	DOM	SP/LP	Benchmark Price	Y/Y%	Median Price	Y/Y%	Average Price	Y/Y%	Index
Jan-19	135	-11%	347	2%	0.39	841	-2%	6.23	60	96.1%	331,800	-1.7%	329,000	-6.5%	342,433	-7.2%	248.5
Feb-19	162	16%	304	-10%	0.53	834	-7%	5.15	51	97.3%	338,000	-1.7%	359,450	2.7%	368,841	0.3%	253.2
Mar-19	168	4%	448	7%	0.38	936	-2%	5.57	52	96.8%	338,900	-2.9%	351,000	-0.8%	358,891	-3.3%	253.9
Apr-19	254	0%	489	3%	0.52	1,017	2%	4.00	52	97.4%	344,000	-0.5%	370,000	8.7%	378,884	3.6%	257.7
May-19	289	12%	624	6%	0.46	1,147	3%	3.97	41	97.4%	345,200	-1.4%	360,000	0.7%	373,428	0.7%	258.6
Jun-19	266	13%	526	-5%	0.51	1,186	-1%	4.46	41	97.0%	341,500	1.1%	357,725	-1.5%	377,885	1.1%	255.8
Jul-19	253	-3%	513	9%	0.49	1,179	0%	4.66	42	97.1%	346,600	0.2%	369,900	3.6%	383,743	-0.2%	259.6
Aug-19	207	-6%	495	4%	0.42	1,217	4%	5.88	47	96.8%	347,400	1.3%	361,900	2.7%	367,701	-1.5%	260.2
Sep-19	216	18%	497	16%	0.43	1,180	3%	5.46	47	96.7%	341,200	-0.8%	365,000	8.0%	396,140	13.1%	255.6
Oct-19	199	5%	415	8%	0.48	1,088	4%	5.47	46	97.2%	342,100	-1.2%	350,000	-3.0%	361,322	-2.9%	256.3
Nov-19	183	32%	303	-13%	0.60	986	-2%	5.39	50	97.0%	336,600	-0.2%	372,000	1.1%	364,855	-3.6%	252.1
Dec-19	138	17%	198	-1%	0.70	805	-2%	5.83	61	96.2%	337,200	-1.3%	361,100	2.4%	369,186	-2.7%	252.6
2020	2,470	7%	5,159	3%	0.48	1,035	0%	5.03	48	97.0%	340,875	-0.8%	361,250	2.3%	372,201	0.2%	255.3
Jan-20	159	18%	377	9%	0.42	847	1%	5.33	63	97.0%	348,400	5.0%	359,500	9.3%	364,475	6.4%	261.0
Feb-20	151	-7%	311	2%	0.49	877	5%	5.81	62	96.6%	350,100	3.6%	360,000	0.2%	363,744	-1.4%	262.2
Mar-20	194	15%	402	-10%	0.48	905	-3%	4.66	51	97.2%	348,400	2.8%	369,200	5.2%	379,224	5.7%	261.0
Apr-20	152	-40%	314	-36%	0.48	884	-13%	5.82	48	96.3%	345,800	0.5%	340,000	-8.1%	380,204	0.3%	259.0
May-20	241	-17%	517	-17%	0.47	967	-16%	4.01	43	97.1%	353,000	2.3%	369,000	2.5%	389,632	4.3%	264.4
Jun-20	375	41%	561	7%	0.67	957	-19%	2.55	38	97.8%	352,100	3.1%	370,000	3.4%	371,657	-1.6%	263.7
Jul-20	385	52%	556	8%	0.69	933	-21%	2.42	38	97.9%	363,100	4.8%	384,900	4.1%	392,977	2.4%	272.0
Aug-20	344	66%	530	7%	0.65	910	-25%	2.65	39	97.8%	361,400	4.0%	364,250	0.6%	389,338	5.9%	270.7
Sep-20	317	47%	548	10%	0.58	911	-23%	2.87	35	97.5%	363,700	6.6%	377,900	3.5%	390,820	-1.3%	272.4
Oct-20	317	59%	394	-5%	0.80	803	-26%	2.53	38	97.4%	356,500	4.2%	365,000	4.3%	389,882	7.9%	267.0
Nov-20	248	36%	280	-8%	0.89	650	-34%	2.62	37	97.4%	359,500	6.8%	357,300	-4.0%	370,731	1.6%	269.3
Dec-20	195	41%	196	-1%	0.99	489	-39%	2.51	40	97.7%	365,100	8.3%	363,000	0.5%	373,427	1.1%	273.5
2021	3,078	25%	4,986	-3%	0.62	844	-18%	3.29	42	97.4%	355,592	4.3%	367,500	1.7%	381,735	2.6%	266.4
Jan-21	189	19%	309	-18%	0.61	504	-40%	2.67	47	97.8%	365,800	5.0%	360,000	0.1%	387,264	6.3%	274.0
Feb-21	227	50%	318	2%	0.71	524	-40%	2.31	39	98.5%	378,200	8.0%	382,000	6.1%	410,810	12.9%	283.3
Mar-21	384	98%	568	41%	0.68	604	-33%	1.57	25	99.0%	381,700	9.6%	390,500	5.8%	408,749	7.8%	285.9
Apr-21	390	157%	632	101%	0.62	717	-19%	1.84	28	99.5%	386,700	11.8%	399,450	17.5%	412,290	8.4%	289.7
May-21	395	64%	625	21%	0.63	798	-17%	2.02	28	99.1%	391,900	11.0%	405,000	9.8%	426,732	9.5%	293.6
Jun-21	383	2%	567	1%	0.68	818	-15%	2.14	29	99.1%	395,500	12.3%	394,900	6.7%	417,968	12.5%	296.3
Jul-21	302	-22%	493	-11%	0.61	849	-9%	2.81	31	98.9%	393,700	8.4%	389,150	1.1%	416,806	6.1%	294.9
Aug-21	309	-10%	473	-11%	0.65	813	-11%	2.63	32	98.3%	389,600	7.8%	395,000	8.4%	404,260	3.8%	291.8
Sep-21	254	-20%	406	-26%	0.63	790	-13%	3.11	38	98.1%	389,700	7.1%	374,150	-1.0%	395,990	1.3%	291.9
Oct-21	296	-7%	373	-5%	0.79	698	-13%	2.36	39	98.2%	387,100	8.6%	390,000	6.8%	414,724	6.4%	290.0
Nov-21	289	17%	239	-15%	1.21	524	-19%	1.81	44	98.0%	391,900	9.0%	400,000	12.0%	428,029	15.5%	293.6
Dec-21	183	-6%	182	-7%	1.01	400	-18%	2.19	38	98.3%	397,100	8.8%	378,000	4.1%	409,073	9.5%	297.5
2022	3,601	17%	5,185	4%	0.69	670	-21%	2.23	33	98.7%	387,408	8.9%	390,000	6.1%	412,533	8.1%	290.2
Jan-22	147	-22%	233	-25%	0.63	407	-19%	2.77	43	98.0%	397,600	8.7%	387,500	7.6%	423,923	9.5%	297.8
Feb-22	190	-16%	329	3%	0.58	476	-9%	2.51	35	99.1%	405,700	7.3%	405,000	6.0%	421,377	2.6%	303.9
Mar-22	290	-24%	435	-23%	0.67	526	-13%	1.81	34	99.2%	411,200	7.7%	414,250	6.1%	432,024	5.7%	308.0
Apr-22	274	-30%	412	-35%	0.67	578	-19%	2.11	29	99.9%	412,400	6.6%	405,050	1.4%	427,649	3.7%	308.9
May-22	310	-22%	533	-15%	0.58	661	-17%	2.13	27	100.3%	423,900	8.2%	416,000	2.7%	445,091	4.3%	317.5
Jun-22	339	-11%	581	2%	0.58	727	-11%	2.14	25	100.3%	423,500	7.1%	426,000	7.9%	460,088	10.1%	317.2
Jul-22	258	-15%	478	-3%	0.54	779	-8%	3.02	27	99.7%	427,200	8.5%	414,750	6.6%	437,945	5.1%	320.0
Aug-22	288	-7%	439	-7%	0.66	744	-8%	2.58	31	98.5%	415,400	6.6%	420,000	6.3%	445,959	10.3%	311.2
Sep-22	208	-18%	405	0%	0.51	760	-4%	3.65	36	97.7%	408,700	4.9%	420,065	12.3%	439,333	10.9%	306.1
Oct-22	194	-34%	324	-13%	0.60	720	3%	3.71	40	97.4%	409,800	5.9%	378,500	-2.9%	394,906	-4.8%	307.0
Nov-22	166	-43%	273	14%	0.61	670	28%	4.04	41	97.2%	400,400	2.2%	384,700	-3.8%	404,477	-5.5%	299.9
Dec-22	143	-22%	143	-21%	1.00	534	34%	3.73	45	96.9%	390,400	-1.7%	380,000	0.5%	419,841	2.6%	292.4
2023	2,807	-22%	4,585	-12%	0.61	632	-6%	2.70	33	99.0%	410,517	6.0%	410,000	5.1%	432,985	5.0%	307.5
Jan-23	120	-18%	236	1%	0.51	536	32%	4.47	47	97.6%	405,600	1.4%	392,750	1.4%	415,305	-2.0%	303.8
Feb-23	146	-23%	257	-22%	0.57	562	18%	3.85	47	98.2%	409,400	0.9%	409,500	1.1%	421,695	0.1%	306.7
Mar-23	247	-15%	375	-14%	0.66	584	11%	2.36	43	98.6%	418,900	1.9%	417,000	0.7%	444,407	2.9%	313.8
Apr-23	247	-10%	407	-1%	0.61	640	11%	2.59	39	98.5%	417,100	1.1%	418,000	3.2%	432,682	1.2%	312.4
May-23	320	3%	461	-14%	0.69	657	-1%	2.05	31	99.5%	426,000	0.5%	432,450	4.0%	468,554	5.3%	319.1
Jun-23	321	-5%	524	-10%	0.61	699	-4%	2.18	32	98.9%	426,900	0.8%	444,000	4.2%	472,792	2.8%	319.8
Jul-23	289	12%	442	-8%	0.65	727	-7%	2.52	35	99.2%	430,700	0.8%	425,000	2.5%	444,652	1.5%	322.6
Aug-23	310	8%	416	-5%	0.75	681	-8%	2.20	34	99.1%	423,000	1.8%	420,000	0.0%	439,502	-1.4%	316.9
Sep-23	220	6%	398	-2%	0.55	697	-8%	3.17	36	98.9%	428,000	4.7%	434,950	3.5%	444,568	1.2%	320.6
Oct-23	247	27%	330	2%	0.75	618	-14%	2.50	34	98.6%	428,500	4.6%	430,000	13.6%	442,160	12.0%	321.0
Nov-23	191	15%	263	-4%	0.73	569	-15%	2.98	38	98.2%	424,200	5.9%	414,500	7.7%	432,992	7.0%	317.8
Dec-23	128	-10%	147	3%	0.87	476	-11%	3.72	47	98.4%	418,200	7.1%	435,500	14.6%	443,796	5.7%	313.3
2023	2,786	-1%	4,256	-7%	0.65	621	-2%	2.67	37	98.8%	421,375	2.6%	425,000	3.7%	445,450	2.9%	315.7
Jan-24	150	25%	235	0%	0.64	460	-14%	3.07	46	98.4%	426,400	5.1%	420,500	7.1%	447,278	7.7%	319.4
Feb-24	178	22%	255	-1%	0.70	467	-17%	2.62	47	98.6%	433,600	5.9%	415,750	1.5%	416,971	-1.1%	324.8
Mar-24	217	-12%	322	-14%	0.67	500	-14%	2.30	43	99.4%	444,300	6.1%	464,900	11.5%	475,579	7.0%	332.8
Apr-24	298	21%	442	9%	0.67	538	-16%	1.81	33	100.0%	449,000	7.6%	458,450	9.7%	466,823	7.9%	336.3
May-24	335	5%	495	7%	0.68	571	-13%	1.70	30	100.5%	455,000	6.8%	465,000	7.5%	474,968	1.4%	340.8
Jun-24	314	-2%	392	-25%	0.80	533	-24%	1.70	33	100.3%	462,600	8.4%	474,950	7.0%	487,377	3.1%	346.5
Jul-24	306	6%	444	0%	0.69	535	-26%	1.75	29	100.3%	466,700	8.4%	474,900	11.7%	496,749	11.7%	349.6
Aug-24</																	