

The City of Regina reported 320 sales in September – the second-highest level on record for the month – up five per cent year-over-year and 19 per cent above long-term, 10-year trends.

Strong sales figures were met with declining new listings, resulting in a 23 percent year-over-year decline in inventory, over 40 percent below long-term trends.

The City of Regina reported a benchmark price of \$320,700 in September, up from 319,700 in August and nearly five percent above September 2023.



SALES

320

↑ 4.9% Y/Y
↑ 13.9% YTD

VS. 10-YEAR AVERAGE

↑ 18.5%
↑ 28.7% YTD



NEW LISTINGS

407

↓ 7.9% Y/Y
↑ 2.6% YTD

VS. 10-YEAR AVERAGE

↓ 13.4%
↓ 9.4% YTD



INVENTORY

809

↓ 23.0% Y/Y
↔ Monthly trend*

VS. 10-YEAR AVERAGE

↓ 41.2%
↓ 40.0% YTD



MONTHS OF SUPPLY

2.53


↓ 26.6% Y/Y
↔ Monthly trend*

VS. 10-YEAR AVERAGE

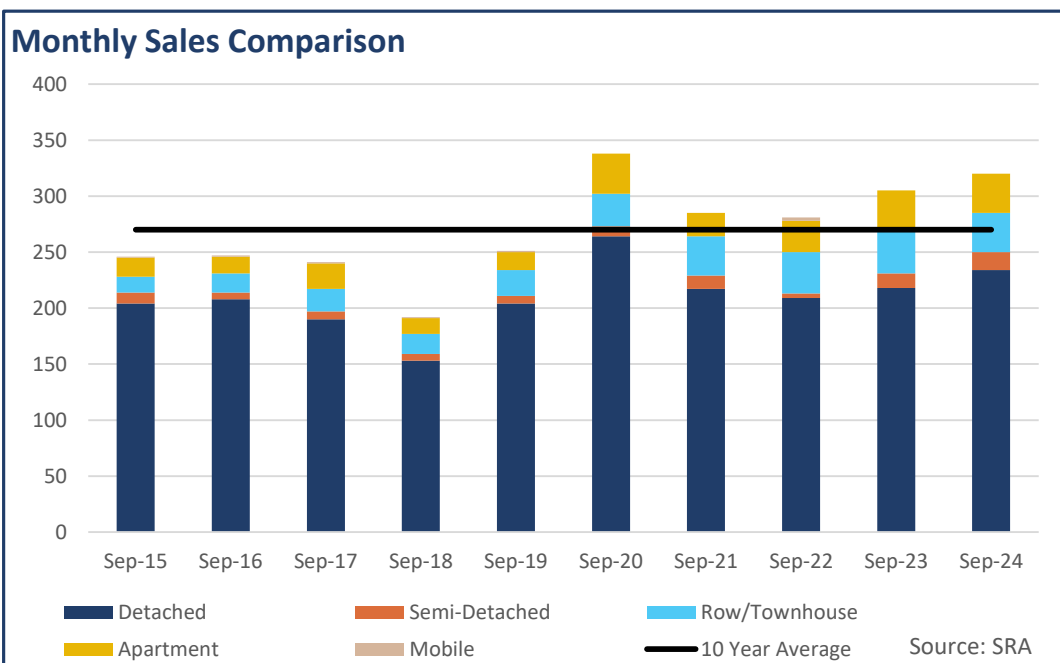
↓ 52.1%
↓ 54.9% YTD

TOTAL RESIDENTIAL BENCHMARK PRICE

\$
320,700
↑
4.7%
Y/Y



Monthly trend*





REGINA - SEPTEMBER 2024

September 2024

	Sales		New Listings		Inventory		Months of Supply		DOM	Benchmark		Avg Price	
	Actual	Y/Y%	Actual	Y/Y%	Actual	Y/Y%	Actual	Y/Y%	Actual	Actual	Y/Y%	Actual	Y/Y%
Detached	234	7%	267	-16%	532	-30%	2.27	-35%	38	\$340,400	4%	\$376,001	14%
Semi-Detached	16	23%	22	57%	36	16%	2.25	-6%	26	\$388,800	6%	\$284,144	-4%
Row/Townhouse	35	-13%	62	-3%	94	-14%	2.69	-1%	28	\$246,800	10%	\$276,683	14%
Apartment	35	3%	51	16%	130	2%	3.71	-1%	43	\$213,400	3%	\$206,069	-1%
Acreage	0	-	0	-	0	-100%	-	-	-	-	-	-	-
Mobile	0	-	1	0%	4	100%	-	-	-	-	-	-	-
Mutli-Family	0	-	4	300%	13	-7%	-	-	-	-	-	-	-
Total Residential	320	5%	407	-8%	809	-23%	2.53	-27%	37	\$320,700	5%	\$341,959	13%

10-Year Averages

	Sales		New Listings		Inventory		Months of Supply		DOM	Benchmark		Avg Price	
	Avg	%Diff	Avg	%Diff	Avg	%Diff	Avg	%Diff	Avg	Avg	%Diff	Avg	%Diff
Total Residential	270	19%	470	-13%	1,377	-41%	5.28	-52%	51	\$297,370	8%	\$315,003	9%

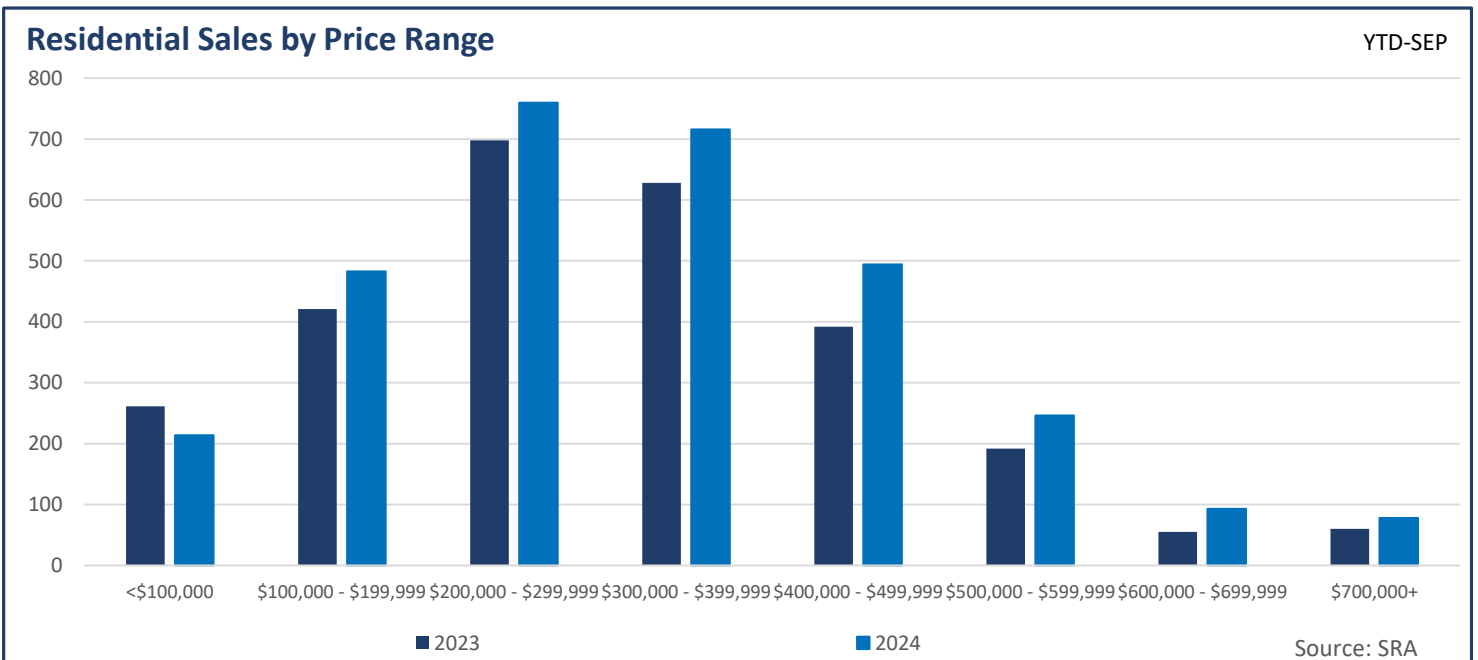
Year-to-Date

September 2024

	Sales		New Listings		Inventory		Months of Supply		DOM	Benchmark		Avg Price	
	Actual	Y/Y%	Actual	Y/Y%	Actual	Y/Y%	Actual	Y/Y%	Actual	Actual	Y/Y%	Actual	Y/Y%
Detached	2,165	14%	2,885	0%	533	-25%	2.22	-34%	39	\$334,778	2%	\$353,302	6%
Semi-Detached	123	0%	154	1%	24	-31%	1.72	-31%	36	\$376,444	4%	\$345,151	7%
Row/Townhouse	422	21%	515	10%	83	-12%	1.77	-27%	41	\$240,700	6%	\$281,462	9%
Apartment	351	13%	498	9%	131	-10%	3.35	-20%	51	\$211,856	3%	\$207,807	-3%
Acreage	0	-	0	-100%	0	-100%	-	-	-	-	-	-	-
Mobile	5	25%	11	10%	3	-25%	4.80	-40%	43	-	-	\$99,580	83%
Mutli-Family	18	-22%	29	-3%	8	-42%	4.17	-26%	70	-	-	\$317,689	13%
Total Residential	3,084	14%	4,092	3%	781	-22%	2.28	-31%	41	\$315,633	2%	\$325,968	5%

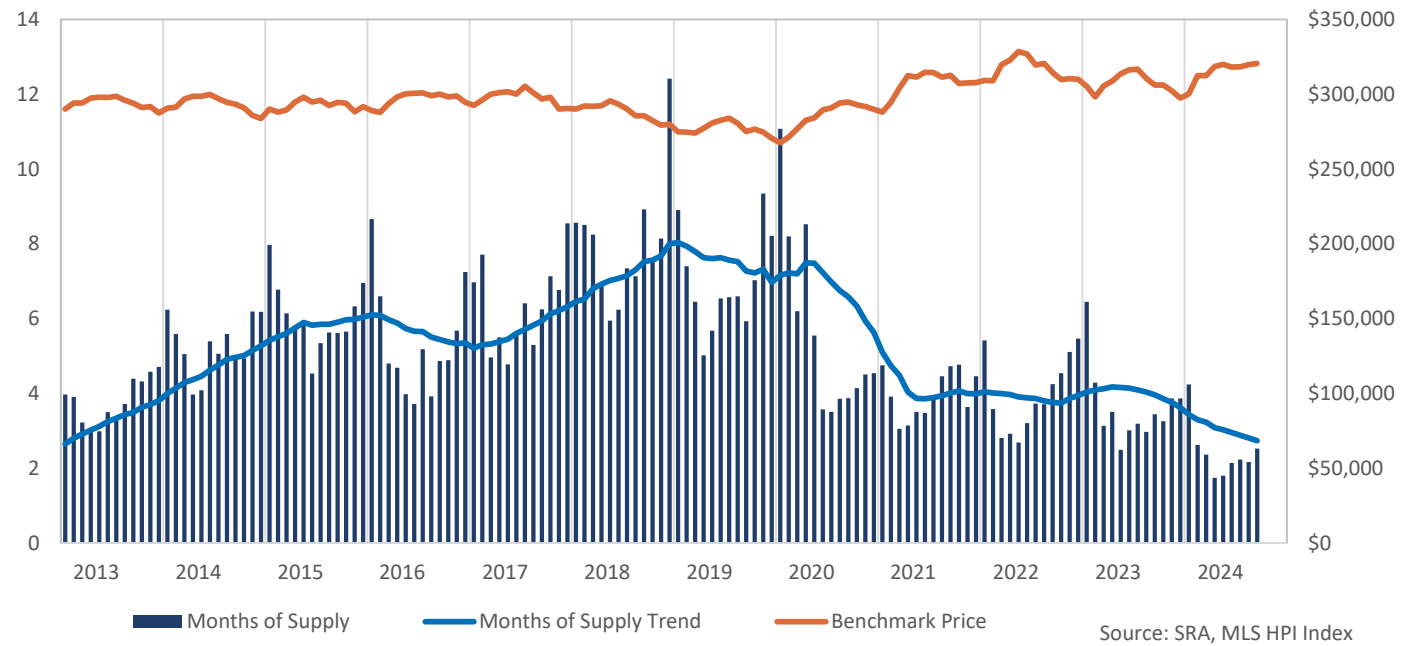
10-Year Averages

	Sales		New Listings		Inventory		Months of Supply		DOM	Benchmark		Avg Price	
	Avg	%Diff	Avg	%Diff	Avg	%Diff	Avg	%Diff	Avg	Avg	%Diff	Avg	%Diff
Total Residential	2,397	29%	4,518	-9%	1,303	-40%	5.05	-55%	48	\$297,270	6%	\$317,563	3%

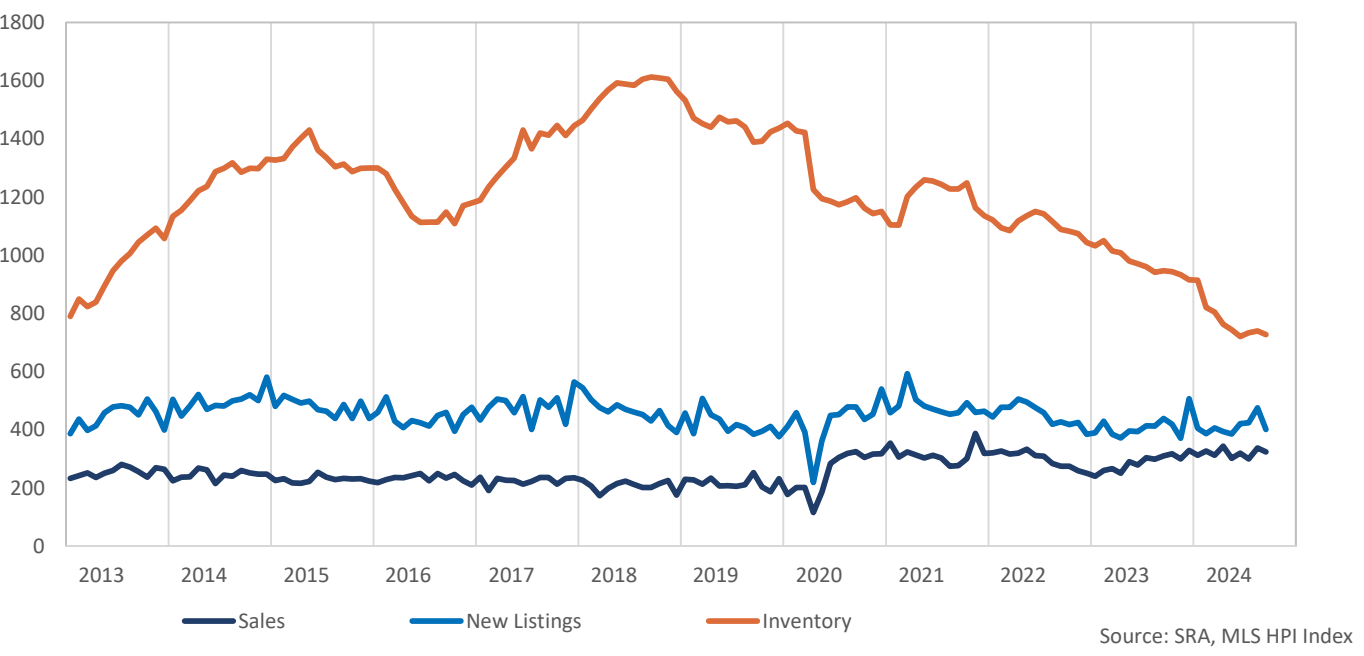




Residential Months of Supply and Price



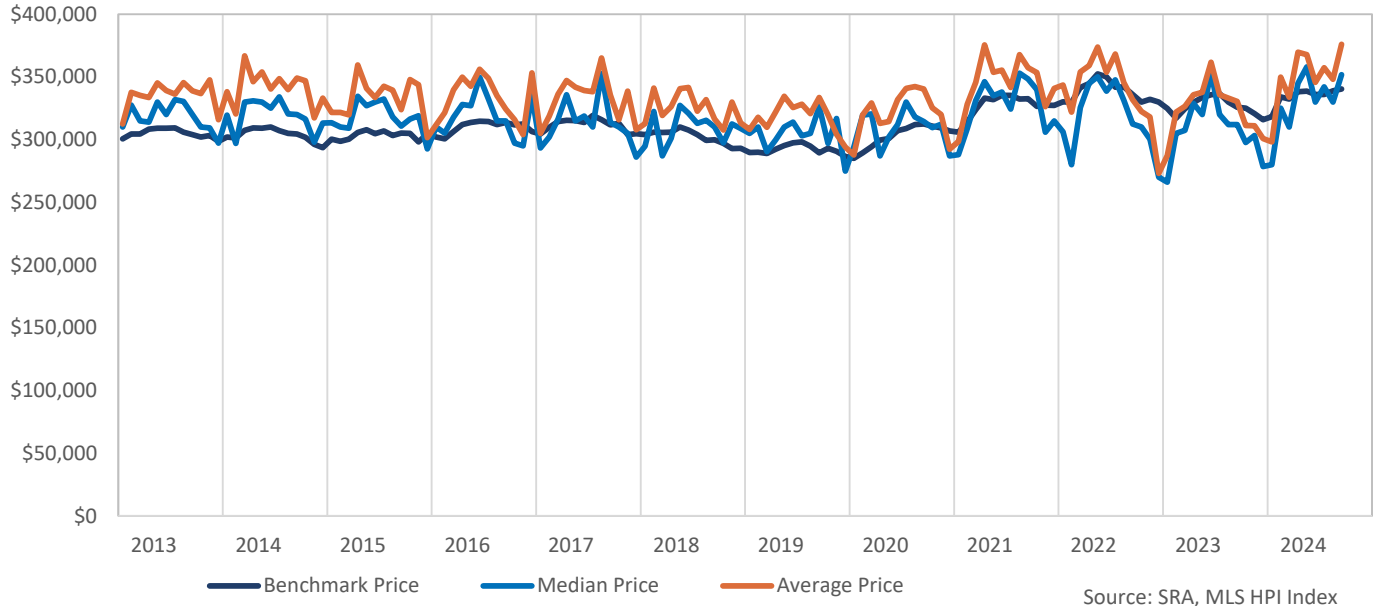
Residential Stats - Seasonally Adjusted



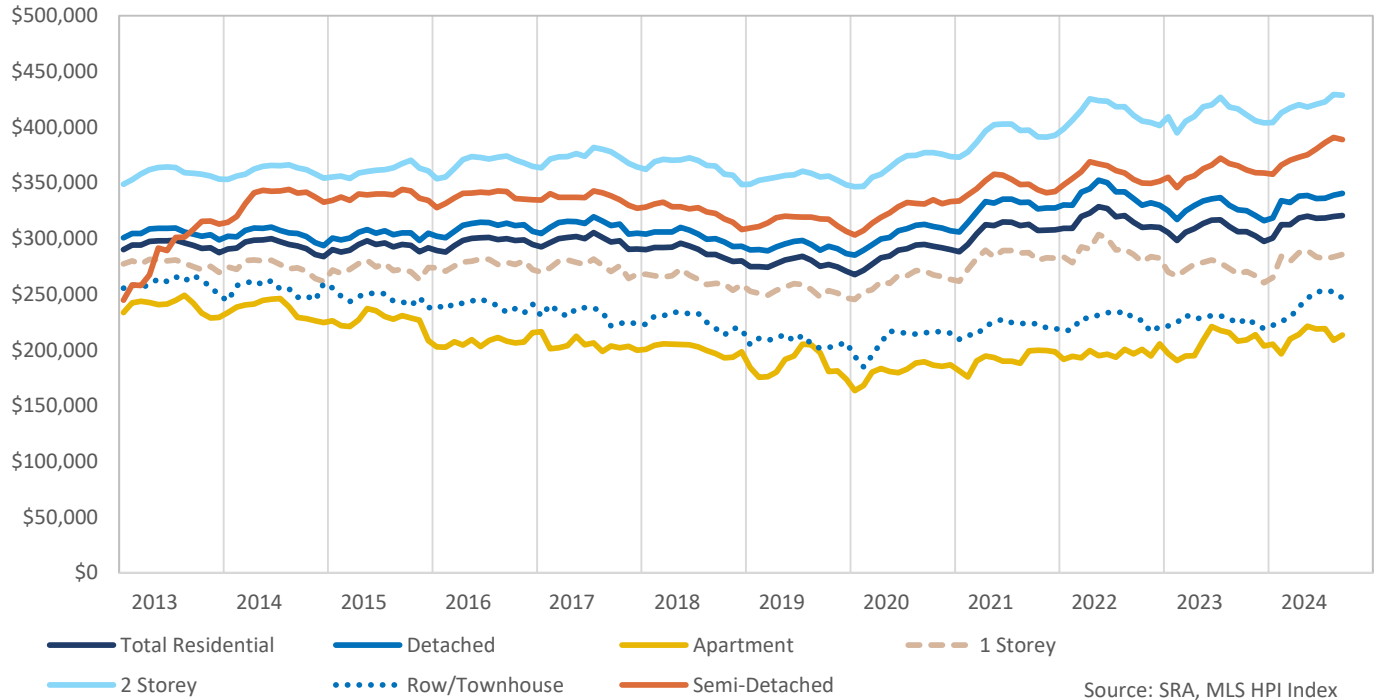


REGINA - SEPTEMBER 2024

Detached Pricing



Benchmark Price





HPI Benchmark Attributes

	Composite
Bedrooms, Above Ground	3
Bathrooms, Full	2
Bathrooms, Half	0
Garage	Attached, Single width
Gross Living Area, Above Ground (Sq. Ft.)	1147
Lot Size	-
Fireplaces, Number of	0
Year Built	1977
September 2024 Benchmark Price	\$320,700
Detached Share of Sales, Last 3 Years	73%
Semi-Detached Share of Sales, Last 3 Years	5%
Apartment Share of Sales, Last 3 Years	10%
Townhouse Share of Sales, Last 3 Years	9%

	Detached	1 Storey	2 Storey
Bedrooms, Above Ground	3	3	3
Bathrooms, Full	2	2	2
Bathrooms, Half	0	0	1
Garage	Attached, Double width	Attached, Single width	Attached, Double width
Gross Living Area, Above Ground (Sq. Ft.)	1184	1062	1452
Lot Size	5355	5503	4805
Fireplaces, Number of	0	0	1
Year Built	1973	1966	2000
September 2024 Benchmark Price	\$340,400	\$285,700	\$428,600
Share of Total Sales, Last 3 Years	73%	49%	32%

	Semi-Detached	Row/Townhouse	Apartment
Bedrooms, Above Ground	3	2	2
Bathrooms, Full	1	1	1
Bathrooms, Half	1	1	0
Garage	Attached, Single width	-	-
Gross Living Area, Above Ground (Sq. Ft.)	1128	1047	968
Fireplaces, Number of	0	0	0
Year Built	2015	2006	2000
September 2024 Benchmark Price	\$388,800	\$246,800	\$213,400
Share of Total Sales, Last 3 Years	5%	9%	10%

REGINA																	
	Sales	Y/Y%	New Listings	Y/Y%	S/NL Ratio	Inventory	Y/Y%	Months of Supply	DOM	SP/PLP	Benchmark Price	Y/Y%	Median Price	Y/Y%	Average Price	Y/Y%	Index
Jan-13	157	-24%	328	2%	0.48	623	34%	3.97	41	97.2%	290,100	5.6%	299,000	6.8%	302,144	4.3%	273.4
Feb-13	185	-25%	394	16%	0.47	722	43%	3.90	31	97.8%	294,200	5.5%	305,000	7.0%	317,752	9.5%	277.3
Mar-13	243	-20%	417	-7%	0.58	784	35%	3.23	27	97.8%	294,100	5.1%	310,000	9.3%	322,134	8.1%	277.2
Apr-13	279	-21%	517	23%	0.54	849	41%	3.04	29	97.4%	297,500	3.8%	305,000	1.7%	319,496	-0.6%	280.4
May-13	340	-6%	669	24%	0.51	1,015	52%	2.99	27	97.7%	298,100	2.9%	310,000	1.6%	329,789	5.0%	281.0
Jun-13	313	-7%	553	29%	0.57	1,095	72%	3.50	25	97.5%	297,900	1.6%	307,000	1.5%	320,547	-3.4%	280.8
Jul-13	340	13%	571	26%	0.60	1,141	67%	3.36	31	97.5%	298,600	1.9%	310,000	3.0%	316,424	-0.2%	281.4
Aug-13	306	12%	510	20%	0.60	1,137	62%	3.72	32	97.3%	296,100	1.6%	312,250	-0.9%	326,468	1.5%	279.1
Sep-13	260	24%	471	19%	0.55	1,143	49%	4.40	36	96.8%	294,000	1.7%	311,000	0.3%	325,554	0.4%	277.1
Oct-13	253	-3%	459	33%	0.55	1,094	53%	4.32	34	97.0%	291,100	0.6%	300,000	2.0%	321,421	4.0%	274.4
Nov-13	224	17%	335	8%	0.67	1,026	47%	4.58	38	96.7%	291,700	1.6%	298,000	-2.6%	328,588	1.4%	274.9
Dec-13	166	3%	176	1%	0.94	782	40%	4.71	45	97.0%	287,400	-0.6%	289,200	-5.2%	302,484	-1.0%	270.9
2014	3,066	-4%	5,400	17%	0.57	951	50%	3.72	32	97.3%	294,233	2.6%	305,000	1.7%	320,731	2.4%	277.3
Jan-14	145	-8%	428	30%	0.34	905	45%	6.24	50	96.8%	290,700	0.2%	303,000	1.3%	324,045	7.2%	274.0
Feb-14	176	-5%	396	1%	0.44	984	36%	5.59	40	97.4%	291,300	-1.0%	291,050	-4.6%	309,886	-2.5%	274.6
Mar-14	223	-8%	518	24%	0.43	1,126	44%	5.05	40	97.4%	296,800	0.9%	308,500	-0.5%	342,098	6.2%	279.7
Apr-14	317	14%	636	23%	0.50	1,260	48%	3.97	34	97.5%	298,600	0.4%	314,000	3.0%	331,322	3.7%	281.4
May-14	341	0%	650	-3%	0.52	1,394	37%	4.09	33	97.2%	298,700	0.2%	319,000	2.9%	337,208	2.2%	281.5
Jun-14	276	-12%	587	6%	0.47	1,488	36%	5.39	37	97.2%	299,900	0.7%	305,500	-0.5%	324,723	1.3%	282.7
Jul-14	297	-13%	563	-1%	0.53	1,502	32%	5.06	40	96.9%	297,100	-0.5%	319,900	3.2%	334,776	5.8%	280.0
Aug-14	264	-14%	509	0%	0.52	1,475	30%	5.59	48	96.8%	294,600	-0.5%	301,500	-3.4%	320,993	-1.7%	277.7
Sep-14	282	8%	557	18%	0.51	1,400	22%	4.96	40	96.7%	293,400	-0.2%	314,500	1.1%	335,312	3.0%	276.5
Oct-14	267	6%	473	3%	0.56	1,318	20%	4.94	47	95.7%	291,000	0.0%	310,000	3.3%	335,111	4.3%	274.3
Nov-14	196	-13%	352	5%	0.56	1,214	18%	6.19	47	96.0%	285,800	-2.0%	290,000	-2.7%	306,236	-6.8%	269.4
Dec-14	162	-2%	271	54%	0.60	1,002	28%	6.19	46	96.1%	283,900	-1.2%	294,075	1.7%	318,437	5.3%	267.6
2015	2,946	-4%	5,940	10%	0.50	1,256	32%	5.11	41	96.8%	293,483	-0.3%	308,750	1.2%	328,332	2.4%	276.6
Jan-15	134	-8%	390	-9%	0.34	1,068	18%	7.97	52	95.6%	290,100	-0.2%	307,750	1.6%	311,449	-3.9%	273.4
Feb-15	169	-4%	449	13%	0.38	1,145	16%	6.78	50	96.1%	288,000	-1.1%	300,000	3.1%	314,084	1.4%	271.4
Mar-15	213	-4%	569	10%	0.37	1,309	16%	6.15	39	96.9%	289,500	-2.5%	300,000	-2.8%	308,893	-9.7%	272.9
Apr-15	253	-20%	604	-5%	0.42	1,458	16%	5.76	40	97.1%	294,800	-1.3%	316,285	0.7%	339,498	2.5%	277.9
May-15	277	-19%	654	1%	0.42	1,607	15%	5.80	34	97.1%	298,000	-0.2%	309,900	-2.9%	325,912	-3.3%	280.9
Jun-15	346	25%	603	3%	0.57	1,567	5%	4.53	36	96.9%	294,800	-1.7%	303,500	-0.7%	317,714	-2.2%	277.9
Jul-15	287	-3%	535	-5%	0.54	1,534	2%	5.34	45	96.9%	296,000	-0.4%	305,000	-4.7%	321,830	-3.9%	279.0
Aug-15	257	-3%	450	-12%	0.57	1,447	-2%	5.63	43	96.9%	292,500	-0.7%	305,000	1.2%	320,972	0.0%	275.7
Sep-15	254	-10%	532	-4%	0.48	1,426	2%	5.61	47	96.1%	294,600	0.4%	300,000	-4.6%	312,218	-6.9%	277.7
Oct-15	230	-14%	384	-19%	0.60	1,301	-1%	5.66	44	96.0%	293,900	1.0%	300,000	-3.2%	332,062	-0.9%	277.0
Nov-15	192	-2%	369	5%	0.52	1,215	0%	6.33	46	96.2%	288,200	0.8%	298,338	2.9%	323,034	5.5%	271.6
Dec-15	143	-12%	204	-25%	0.70	994	-1%	6.95	55	96.2%	291,800	2.8%	289,900	-1.4%	296,428	-6.9%	275.0
2016	2,755	-6%	5,743	-3%	0.48	1,339	7%	5.83	43	96.6%	292,683	-0.3%	303,500	-1.7%	320,019	-2.5%	275.9
Jan-16	122	-9%	358	-8%	0.34	1,057	-1%	8.66	57	96.1%	289,200	-0.3%	292,500	-5.0%	304,524	-2.2%	272.6
Feb-16	174	3%	457	2%	0.38	1,148	0%	6.60	47	96.4%	287,900	0.0%	303,250	1.1%	311,700	-0.8%	271.3
Mar-16	247	16%	493	-13%	0.50	1,185	-9%	4.80	48	96.6%	293,700	1.5%	307,500	2.5%	323,135	4.6%	276.8
Apr-16	259	2%	495	-18%	0.52	1,215	-17%	4.69	41	96.8%	298,200	1.2%	301,000	-4.8%	325,158	-4.2%	281.1
May-16	319	15%	593	-9%	0.54	1,269	-21%	3.98	37	97.0%	300,200	0.7%	316,500	2.1%	328,790	0.9%	282.9
Jun-16	341	-1%	550	-9%	0.62	1,268	-19%	3.72	36	97.2%	300,700	2.0%	322,000	6.1%	335,053	5.5%	283.4
Jul-16	245	-15%	431	-19%	0.57	1,269	-17%	5.18	39	97.0%	300,900	1.7%	310,000	1.6%	331,345	3.0%	283.6
Aug-16	315	23%	509	13%	0.62	1,236	-15%	3.92	44	96.6%	299,100	2.3%	299,000	-2.0%	313,962	-2.2%	281.9
Sep-16	256	1%	494	-7%	0.52	1,245	-13%	4.86	38	96.8%	300,000	1.8%	306,400	2.1%	311,967	-0.1%	282.8
Oct-16	230	0%	335	-13%	0.69	1,124	-14%	4.89	45	96.4%	298,200	1.5%	289,950	-3.4%	299,659	-9.8%	281.1
Nov-16	194	1%	351	-5%	0.55	1,102	-9%	5.68	41	96.4%	298,800	3.7%	288,450	-3.3%	297,773	-7.8%	281.6
Dec-16	126	-12%	209	2%	0.60	913	-8%	7.25	52	96.3%	294,600	1.0%	315,500	8.8%	325,538	9.8%	277.7
2017	2,828	3%	5,275	-8%	0.54	1,169	-13%	4.96	42	96.7%	296,792	1.4%	305,000	0.5%	319,025	-0.3%	279.7
Jan-17	140	15%	360	1%	0.39	976	-8%	6.97	46	96.5%	292,500	1.1%	283,500	-3.1%	293,186	-3.7%	275.7
Feb-17	139	-20%	394	-14%	0.35	1,072	-7%	7.71	43	96.6%	296,300	2.9%	296,200	-2.3%	308,932	-0.9%	279.3
Mar-17	244	-1%	594	20%	0.41	1,211	2%	4.96	45	97.0%	300,000	2.1%	300,950	-2.1%	320,549	-0.8%	282.8
Apr-17	244	-6%	570	15%	0.43	1,341	10%	5.50	37	96.7%	301,000	0.9%	314,000	4.3%	327,597	0.8%	283.7
May-17	312	-2%	663	12%	0.47	1,490	17%	4.78	34	97.2%	301,800	0.5%	304,757	-3.7%	328,789	0.0%	284.4
Jun-17	290	-15%	671	22%	0.43	1,618	28%	5.58	34	96.9%	300,000	-0.2%	299,950	-6.8%	316,488	-5.5%	282.8
Jul-17	242	-1%	422	-2%	0.57	1,552	22%	6.41	43	97.1%	305,300	1.5%	308,000	-0.6%	322,778	-2.6%	287.7
Aug-17	299	-5%	574	13%	0.52	1,583	28%	5.29	51	97.2%	300,900	0.6%	325,000	8.7%	340,136	8.3%	283.6
Sep-17	244	-5%	481	-3%	0.51	1,524	22%	6.25	55	96.6%	296,900	-1.0%	297,750	-2.8%	320,886	2.9%	279.8
Oct-17	207	-10%	458	37%	0.45	1,476	31%	7.13	59	96.4%	298,000	-0.1%	291,250	0.4%	297,398	-0.8%	280.9
Nov-17	198	2%	321	-9%	0.62	1,340	22%	6.77	61	96.1%	290,200	-2.9%	281,000	-2.6%	309,558	4.0%	273.5
Dec-17	132	5%	232	11%	0.57	1,128	24%	8.55	63	96.0%	290,600	-1.4%	282,000	-10.6%	295,936	-9.1%	273.9
2018	2,691	-5%	5,740	9%	0.47	1,359	16%	6.06	46	96.8%	297,792	0.3%	300,000	-1.6%	318,293	-0.2%	280.7
Jan-18	142	1%	473	31%	0.30	1,216	25%	8.56	76	95.7%	290,100	-0.8%	278,900	-1.6%	295,451	0.8%	273.4
Feb-18	153	10%	405	3%	0.38	1,302	21%	8.51	56	96.1%	292,100	-1.4%	310,000	4.7%	316,386	2.4%	275.3
Mar-18	176	-28%	531	-11%	0.33	1,452	20%	8.25	56	96.5%	292,000	-2.7%	280,500	-6.8%	307,198	-4.2%	275.2
Apr-18	229	-6%	559	-2%	0.41	1,597	19%	6.97	58	96.5%	292,300	-2.9%	280,000	-10.8%	305,045	-6.9%	275.5
May-18	297	-5%	704	6%	0.42	1,767	19%	5.95	56	96.7%	295,700	-2.0%	309,000	1.4%	322,963	-1.8%	278.7
Jun-18	286	-1%	589	-12%	0.49	1,785	10%	6.24	58	96.4%	293,300	-2.2%	304,450	1.5%	321,592	1.6%	276.4
Jul-18	245	1%	517	23%	0.47	1,800	16%	7.35	62	96.2%	290,200	-4.9%					

REGINA

	Sales	Y/Y%	New Listings	Y/Y%	S/NL Ratio	Inventory	Y/Y%	Months of Supply	DOM	SP/LP	Benchmark Price	Y/Y%	Median Price	Y/Y%	Average Price	Y/Y%	Index
Jan-19	144	1%	393	-17%	0.37	1,282	5%	8.90	73	95.2%	274,900	-5.2%	288,950	3.6%	290,970	-1.5%	259.1
Feb-19	171	12%	304	-25%	0.56	1,266	-3%	7.40	76	95.9%	274,700	-6.0%	296,000	-4.5%	302,194	-4.5%	258.9
Mar-19	210	19%	534	1%	0.39	1,355	-7%	6.45	73	95.9%	274,100	-6.1%	275,000	-2.0%	297,134	-3.3%	258.3
Apr-19	289	26%	581	4%	0.50	1,452	-9%	5.02	61	96.2%	277,400	-5.1%	283,000	1.1%	301,403	-1.2%	261.5
May-19	286	-4%	637	-10%	0.45	1,624	-8%	5.68	53	96.5%	280,700	-5.1%	290,500	-6.0%	314,674	-2.6%	264.6
Jun-19	250	-13%	477	-19%	0.52	1,635	-8%	6.54	54	96.3%	282,500	-3.7%	291,000	-4.4%	306,912	-4.6%	266.3
Jul-19	254	4%	502	-3%	0.51	1,670	-7%	6.57	54	95.5%	284,000	-2.1%	277,500	-6.7%	300,544	-2.2%	267.7
Aug-19	247	-2%	443	-14%	0.56	1,629	-10%	6.60	60	96.2%	280,500	-1.8%	295,000	2.3%	300,253	-5.4%	264.4
Sep-19	254	30%	376	-7%	0.68	1,507	-13%	5.93	63	96.0%	275,000	-3.7%	309,200	4.8%	316,931	7.4%	259.2
Oct-19	204	-6%	383	-14%	0.53	1,434	-13%	7.03	77	95.6%	276,800	-2.0%	282,500	-0.9%	300,697	1.4%	260.9
Nov-19	147	-22%	293	-7%	0.50	1,374	-11%	9.35	65	95.5%	274,600	-1.7%	280,000	-9.7%	282,280	-11.4%	258.8
Dec-19	138	39%	157	-1%	0.88	1,134	-8%	8.22	71	94.9%	270,600	-3.3%	266,104	-11.3%	276,742	-7.4%	255.0
2020	2,594	5%	5,080	-10%	0.51	1,447	-8%	6.69	63	95.9%	277,150	-3.8%	287,250	-2.6%	301,400	-2.8%	261.2
Jan-20	110	-24%	344	-12%	0.32	1,218	-5%	11.07	84	95.5%	267,600	-2.7%	274,000	-5.2%	264,169	-9.2%	252.2
Feb-20	154	-10%	357	17%	0.43	1,263	0%	8.20	78	95.9%	271,500	-1.2%	290,750	-1.8%	298,052	-1.4%	255.9
Mar-20	212	1%	430	-19%	0.49	1,314	-3%	6.20	68	96.2%	277,000	1.1%	300,000	9.1%	308,764	3.9%	261.1
Apr-20	144	-50%	285	-51%	0.51	1,228	-15%	8.53	62	95.4%	282,600	1.9%	287,925	1.7%	304,991	1.2%	266.4
May-20	234	-18%	485	-24%	0.48	1,299	-20%	5.55	61	96.2%	284,200	1.2%	282,000	-2.9%	296,694	-5.7%	267.9
Jun-20	374	50%	599	26%	0.62	1,336	-18%	3.57	58	96.9%	289,600	2.5%	292,750	0.6%	312,447	1.8%	273.0
Jul-20	384	51%	554	10%	0.69	1,347	-19%	3.51	48	96.8%	290,900	2.4%	300,000	8.1%	314,862	4.8%	274.2
Aug-20	347	40%	489	10%	0.71	1,339	-18%	3.86	51	96.6%	294,100	4.8%	304,900	3.4%	319,344	6.4%	277.2
Sep-20	339	33%	491	31%	0.69	1,314	-13%	3.88	52	96.8%	294,800	7.2%	288,000	-6.9%	314,384	-0.8%	277.9
Oct-20	291	43%	406	6%	0.72	1,205	-16%	4.14	55	96.7%	293,000	5.9%	285,000	0.9%	303,238	0.8%	276.2
Nov-20	246	67%	322	10%	0.76	1,110	-19%	4.15	59	96.1%	291,700	6.2%	295,750	5.6%	301,018	6.6%	274.9
Dec-20	200	45%	233	48%	0.86	908	-20%	4.54	58	96.5%	290,000	7.2%	271,000	1.8%	278,139	0.5%	273.3
2021	3,035	17%	4,995	-2%	0.61	1,240	-14%	4.90	58	96.5%	285,583	3.0%	290,000	1.0%	305,381	1.3%	269.2
Jan-21	193	75%	338	-2%	0.57	917	-25%	4.75	57	96.3%	288,100	7.7%	265,000	-3.3%	274,249	3.8%	271.5
Feb-21	239	55%	373	4%	0.64	936	-26%	3.92	53	97.6%	294,600	8.5%	276,400	-4.9%	298,247	0.1%	277.7
Mar-21	360	70%	680	58%	0.53	1,100	-16%	3.06	41	97.8%	304,200	9.8%	308,500	2.8%	320,071	3.7%	286.7
Apr-21	392	172%	655	130%	0.60	1,231	0%	3.14	40	98.5%	312,400	10.5%	320,000	11.1%	344,271	12.9%	294.4
May-21	387	65%	646	33%	0.60	1,359	5%	3.51	42	98.3%	311,500	9.6%	319,000	13.1%	330,429	11.4%	293.6
Jun-21	409	9%	635	6%	0.64	1,422	6%	3.48	38	98.2%	314,800	8.7%	319,700	9.2%	334,453	7.0%	296.7
Jul-21	365	-5%	549	-1%	0.66	1,436	7%	3.93	43	97.7%	314,500	8.1%	310,000	3.3%	315,044	0.1%	296.4
Aug-21	311	-10%	480	-2%	0.65	1,386	4%	4.46	44	97.8%	311,500	5.9%	324,893	6.6%	339,000	6.2%	293.6
Sep-21	287	-15%	476	-3%	0.60	1,356	3%	4.72	53	97.7%	312,600	6.0%	315,000	9.4%	334,054	6.3%	294.6
Oct-21	274	-6%	437	8%	0.63	1,307	8%	4.77	52	97.2%	307,200	4.8%	305,000	7.0%	324,992	7.2%	289.5
Nov-21	313	27%	341	6%	0.92	1,139	3%	3.64	61	96.9%	307,600	5.5%	290,000	-1.9%	306,720	1.9%	289.9
Dec-21	201	1%	200	-14%	1.01	896	-1%	4.46	62	97.1%	307,800	6.1%	290,505	7.2%	313,747	12.8%	290.1
2022	3,731	23%	5,810	16%	0.64	1,207	-3%	3.88	47	97.7%	307,233	7.6%	306,000	5.5%	322,559	5.6%	289.6
Jan-22	171	-11%	317	-6%	0.54	926	1%	5.42	62	96.4%	309,200	7.3%	285,000	7.5%	318,281	16.1%	291.4
Feb-22	258	8%	372	0%	0.69	923	-1%	3.58	54	97.5%	309,100	4.9%	262,750	-4.9%	299,002	0.3%	291.3
Mar-22	351	-3%	550	-19%	0.64	985	-10%	2.81	48	98.1%	319,800	5.1%	300,000	-2.8%	323,548	1.1%	301.4
Apr-22	379	-3%	625	-5%	0.61	1,107	-10%	2.92	40	98.8%	322,800	3.3%	310,000	-3.1%	327,321	-4.9%	304.2
May-22	452	17%	693	7%	0.65	1,215	-11%	2.69	39	98.8%	328,600	5.5%	324,200	1.6%	337,676	2.2%	309.7
Jun-22	407	0%	648	2%	0.63	1,306	-8%	3.21	37	98.2%	327,000	3.9%	306,000	-4.3%	326,373	-2.4%	308.2
Jul-22	355	-3%	525	-4%	0.68	1,323	-8%	3.73	41	97.7%	319,600	1.6%	309,000	-0.3%	334,132	6.1%	301.2
Aug-22	339	9%	462	-4%	0.73	1,259	-9%	3.71	45	97.2%	320,600	2.9%	305,000	-6.1%	311,574	-8.1%	302.2
Sep-22	284	-1%	448	-6%	0.63	1,206	-11%	4.25	51	96.7%	314,600	0.6%	293,375	-6.9%	305,131	-8.7%	296.5
Oct-22	252	-8%	370	-15%	0.68	1,144	-12%	4.54	50	96.9%	309,900	0.9%	300,000	-1.6%	311,978	-4.0%	292.1
Nov-22	208	-34%	315	-8%	0.66	1,062	-7%	5.11	50	97.0%	310,400	0.9%	279,500	-3.6%	292,674	-4.6%	292.6
Dec-22	151	-25%	159	-21%	0.95	825	-8%	5.46	55	95.7%	310,100	0.7%	253,000	-12.9%	260,622	-16.9%	292.3
2023	3,607	-3%	5,484	-6%	0.66	1,107	-8%	3.68	46	97.7%	316,808	3.1%	300,000	-2.0%	317,272	-1.6%	298.6
Jan-23	132	-23%	286	-10%	0.46	852	-8%	6.45	64	95.7%	305,400	-1.2%	247,950	-13.0%	275,312	-13.5%	287.8
Feb-23	206	-20%	336	-10%	0.61	884	-4%	4.29	64	96.1%	298,300	-3.5%	266,500	1.4%	296,022	-1.0%	281.1
Mar-23	293	-17%	444	-19%	0.66	918	-7%	3.13	58	97.0%	305,500	-4.5%	284,900	-5.0%	304,288	-6.0%	287.9
Apr-23	282	-26%	434	-31%	0.65	989	-11%	3.51	48	97.2%	308,900	-4.3%	302,900	-2.3%	312,056	-4.7%	291.1
May-23	418	-8%	576	-17%	0.73	1,041	-14%	2.49	46	98.2%	313,600	-4.6%	300,000	-7.5%	312,663	-7.4%	295.6
Jun-23	365	-10%	540	-17%	0.68	1,099	-16%	3.01	42	98.0%	316,400	-3.2%	324,900	6.2%	332,823	2.0%	298.2
Jul-23	348	-2%	476	-9%	0.73	1,112	-16%	3.20	50	97.0%	316,700	-0.9%	298,062	-3.5%	308,757	-7.6%	298.5
Aug-23	358	6%	455	-2%	0.79	1,063	-16%	2.97	43	97.2%	310,700	-3.1%	294,000	-3.6%	309,252	-0.7%	292.8
Sep-23	305	7%	442	-1%	0.69	1,050	-13%	3.44	51	97.1%	306,200	-2.7%	288,000	-1.8%	303,941	-0.4%	288.6
Oct-23	308	22%	389	5%	0.79	1,003	-12%	3.26	46	97.2%	306,100	-1.2%	276,250	-7.9%	290,949	-6.7%	288.5
Nov-23	240	15%	274	-13%	0.88	928	-13%	3.87	48	96.8%	302,400	-2.6%	291,750	4.4%	296,748	1.4%	285.0
Dec-23	188	25%	200	26%	0.94	727	-12%	3.87	62	96.2%	297,400	-4.1%	265,000	4.7%	285,308	9.5%	280.3
2023	3,443	-5%	4,852	-12%	0.71	972	-12%	3.39	50	97.2%	307,300	-3.0%	290,000	-3.3%	305,543	-3.7%	289.6
Jan-24	179	36%	311	9%	0.58	759	-11%	4.24	70	96.0%	300,300	-1.7%	272,500	9.9%	285,771	3.8%	283.0
Feb-24	272	32%	319	-5%	0.85	714	-19%	2.63	58	97.3%	312,500	4.8%	305,650	14.7%	322,442	8.9%	294.5
Mar-24	311	6%	417	-6%	0.75	734	-20%	2.36	47	97.9%	312,500	2.3%	287,000	0.7%	311,848	2.5%	294.5
Apr-24	422	50%	514	18%	0.82	737	-25%	1.75	41	98.4%	318,500	3.1%	318,900	5.3%	336,784	7.9%	300.2
May-24	436	4%	559	-3%	0.78	784	-25%	1.80	34	99.0%	320,000	2.0%	325,000	8.3%	337,636	8.0%	301.6
Jun-24	378	4%	526	-3%	0.72	809	-26%	2.14	32	98.9%	318,100	0.5%	313,250	-3.6%	320,313	-3.8%	299.8
Jul-24	380	9%	537	13%	0.71	849	-24%	2.23	36	98.5%	318,400						

REGINA																	
	Sales	Y/Y%	New Listings	Y/Y%	S/NL Ratio	Inventory	Y/Y%	Months of Supply	DOM	SP/LP	Benchmark Price	Y/Y%	Median Price	Y/Y%	Average Price	Y/Y%	Index
Jan-13	132	-23%	240	-3%	0.55	440	21%	3.33	43	97.1%	300,700	5.5%	310,000	3.3%	312,525	5.0%	280.5
Feb-13	142	-28%	308	18%	0.46	528	39%	3.72	30	97.9%	304,400	5.4%	327,450	11.0%	337,716	10.2%	284.0
Mar-13	195	-19%	332	-1%	0.59	580	37%	2.97	26	97.8%	304,500	5.3%	315,000	3.6%	335,269	6.8%	284.0
Apr-13	220	-23%	373	7%	0.59	590	34%	2.68	29	97.5%	308,500	4.0%	314,000	-2.0%	333,649	-2.1%	287.8
May-13	269	-5%	526	24%	0.51	724	45%	2.69	25	97.6%	309,200	2.7%	330,000	4.0%	345,332	3.2%	288.4
Jun-13	246	-7%	444	24%	0.55	792	60%	3.22	21	97.4%	309,200	1.3%	319,900	-3.8%	339,267	-3.8%	288.4
Jul-13	261	5%	472	34%	0.55	857	64%	3.28	25	97.2%	309,300	1.4%	332,000	5.4%	336,321	2.8%	288.5
Aug-13	252	16%	417	19%	0.60	847	54%	3.36	28	97.3%	306,000	1.3%	330,500	2.6%	345,471	3.1%	285.4
Sep-13	210	21%	380	15%	0.55	864	44%	4.11	35	96.7%	304,100	1.6%	320,000	-3.0%	338,886	1.0%	283.7
Oct-13	204	-4%	360	33%	0.57	818	48%	4.01	33	96.9%	302,000	0.7%	310,000	3.2%	336,859	5.2%	281.7
Nov-13	184	20%	254	10%	0.72	736	40%	4.00	37	96.5%	303,300	1.8%	309,450	-2.4%	347,584	3.1%	282.9
Dec-13	140	8%	127	-9%	1.10	551	34%	3.94	44	96.9%	298,800	-0.2%	297,250	-3.5%	315,928	0.3%	278.7
2014	2,455	-5%	4,233	6%	0.58	694	45%	3.39	30	97.3%	305,000	2.5%	318,000	1.0%	336,966	2.8%	284.5
Jan-14	118	-11%	290	21%	0.41	603	37%	5.11	51	96.7%	302,100	0.5%	319,500	3.1%	338,135	8.2%	281.8
Feb-14	141	-1%	281	-9%	0.50	651	23%	4.62	38	97.3%	301,400	-1.0%	296,900	-9.3%	320,580	-5.1%	281.2
Mar-14	170	-13%	389	17%	0.44	750	29%	4.41	41	97.3%	307,300	0.9%	330,000	4.8%	366,863	9.4%	286.7
Apr-14	247	12%	476	28%	0.52	846	43%	3.43	30	97.4%	309,300	0.3%	331,000	5.4%	346,277	3.8%	288.5
May-14	273	1%	521	-1%	0.52	961	33%	3.52	31	96.9%	309,200	0.0%	330,000	0.0%	353,849	2.5%	288.4
Jun-14	205	-17%	463	4%	0.44	1,063	34%	5.19	30	97.1%	310,200	0.3%	325,000	1.6%	340,317	0.3%	289.4
Jul-14	245	-6%	421	-11%	0.58	1,052	23%	4.29	39	96.8%	307,200	-0.7%	334,000	0.6%	348,625	3.7%	286.6
Aug-14	206	-18%	402	-4%	0.51	1,047	24%	5.08	45	96.8%	305,100	-0.3%	320,500	-3.0%	339,826	-1.6%	284.6
Sep-14	236	12%	433	14%	0.55	1,005	16%	4.26	38	96.6%	304,600	0.2%	320,000	0.0%	349,177	3.0%	284.1
Oct-14	216	6%	363	1%	0.60	929	14%	4.30	41	95.5%	301,900	0.0%	316,500	2.1%	347,004	3.0%	281.6
Nov-14	150	-18%	239	-6%	0.63	827	12%	5.51	40	95.9%	296,300	-2.3%	298,000	-3.7%	317,474	-8.7%	276.4
Dec-14	136	-3%	199	57%	0.68	673	22%	4.95	42	96.1%	293,500	-1.8%	313,250	5.4%	333,222	5.5%	273.8
2015	2,343	-5%	4,477	6%	0.52	867	25%	4.44	38	96.7%	304,008	-0.3%	320,000	0.6%	343,611	2.0%	283.6
Jan-15	110	-7%	270	-7%	0.41	705	17%	6.41	50	95.5%	300,400	-0.6%	313,500	-1.9%	321,833	-4.8%	280.2
Feb-15	141	0%	301	7%	0.47	733	13%	5.20	44	96.1%	298,800	-0.9%	310,000	4.4%	321,812	0.4%	278.7
Mar-15	165	-3%	389	0%	0.42	822	10%	4.98	36	96.7%	300,300	-2.3%	309,000	-6.4%	319,691	-12.9%	280.1
Apr-15	194	-21%	447	-6%	0.43	934	10%	4.81	33	97.1%	305,700	-1.2%	334,500	1.1%	359,577	3.8%	285.2
May-15	223	-18%	484	-7%	0.46	1,047	9%	4.70	32	97.1%	308,000	-0.4%	327,000	-0.9%	340,783	-3.7%	287.3
Jun-15	265	29%	418	-10%	0.63	1,017	-4%	3.84	30	96.9%	304,800	-1.7%	329,900	1.5%	333,706	-1.9%	284.3
Jul-15	223	-9%	404	-4%	0.55	1,009	-4%	4.52	40	96.9%	306,900	-0.1%	332,500	-0.4%	342,446	-1.8%	286.3
Aug-15	185	-10%	323	-20%	0.57	958	-9%	5.18	36	96.8%	303,300	-0.6%	318,000	-0.8%	339,405	-0.1%	282.9
Sep-15	204	-14%	384	-11%	0.53	940	-6%	4.61	44	96.1%	305,200	0.2%	310,900	-2.8%	323,869	-7.2%	284.7
Oct-15	182	-16%	279	-23%	0.65	850	-9%	4.67	40	95.9%	305,000	1.0%	316,500	0.0%	347,999	0.3%	284.5
Nov-15	141	-6%	257	8%	0.55	783	-5%	5.55	43	96.0%	298,200	0.6%	319,000	7.0%	343,828	8.3%	278.2
Dec-15	112	-18%	142	-29%	0.79	651	-3%	5.81	51	96.1%	304,800	3.9%	292,750	-6.5%	301,507	-9.5%	284.3
2016	2,145	-8%	4,098	-8%	0.52	871	0%	4.87	39	96.5%	303,450	-0.2%	319,000	-0.3%	334,974	-2.5%	283.1
Jan-16	91	-17%	244	-10%	0.37	688	-2%	7.56	57	95.8%	302,000	0.5%	310,000	-1.1%	311,801	-3.1%	281.7
Feb-16	146	4%	314	4%	0.46	733	0%	5.02	44	96.3%	300,600	0.6%	305,250	-1.5%	321,472	-0.1%	280.4
Mar-16	184	12%	361	-7%	0.51	773	-6%	4.20	44	96.6%	306,500	2.1%	317,800	2.8%	339,657	6.2%	285.9
Apr-16	197	2%	366	-18%	0.54	806	-14%	4.09	36	97.0%	312,000	2.1%	328,000	-1.9%	349,869	-2.7%	291.0
May-16	256	15%	456	-6%	0.56	865	-17%	3.38	33	97.0%	313,600	1.8%	327,000	0.0%	342,591	0.5%	292.5
Jun-16	267	1%	408	-2%	0.65	855	-16%	3.20	30	97.2%	314,600	3.2%	349,900	6.1%	356,161	6.7%	293.5
Jul-16	191	-14%	341	-16%	0.56	867	-14%	4.54	33	97.0%	314,400	2.4%	332,500	0.0%	348,850	1.9%	293.3
Aug-16	245	32%	365	13%	0.67	832	-13%	3.40	33	96.7%	312,000	2.9%	314,897	-1.0%	335,041	-1.3%	291.0
Sep-16	208	2%	356	-7%	0.58	822	-13%	3.95	37	96.8%	313,700	2.8%	315,000	1.3%	324,358	0.2%	292.6
Oct-16	168	-8%	234	-16%	0.72	735	-14%	4.38	38	96.3%	311,700	2.2%	297,250	-6.1%	315,887	-9.2%	290.8
Nov-16	158	12%	253	-2%	0.62	712	-9%	4.51	40	96.4%	312,500	4.8%	295,000	-7.5%	303,943	-11.6%	291.5
Dec-16	91	-19%	151	6%	0.60	584	-10%	6.42	47	96.6%	306,500	0.6%	335,000	14.4%	353,223	17.2%	285.9
2017	2,202	3%	3,849	-6%	0.57	773	-11%	4.21	38	96.8%	310,008	2.2%	319,950	0.3%	335,579	0.2%	289.2
Jan-17	114	25%	255	5%	0.45	615	-11%	5.39	41	96.4%	304,400	0.8%	293,250	-5.4%	305,083	-2.2%	284.0
Feb-17	109	-25%	264	-16%	0.41	666	-9%	6.11	36	96.5%	309,900	3.1%	302,000	-1.1%	318,737	-0.9%	289.1
Mar-17	172	-7%	396	10%	0.43	746	-3%	4.34	41	97.1%	314,400	2.6%	316,500	-0.4%	336,188	-1.0%	293.3
Apr-17	186	-6%	390	7%	0.48	823	2%	4.42	32	96.5%	315,300	1.1%	335,750	2.4%	347,190	-0.8%	294.1
May-17	243	-5%	470	3%	0.52	923	7%	3.80	28	97.3%	315,100	0.5%	315,000	-3.7%	341,887	-0.2%	293.9
Jun-17	211	-21%	481	18%	0.44	1,033	21%	4.90	28	97.0%	313,600	-0.3%	318,800	-8.9%	339,231	-4.8%	292.5
Jul-17	187	-2%	304	-11%	0.62	999	15%	5.34	37	96.9%	319,400	1.6%	310,000	-6.8%	338,317	-3.0%	297.9
Aug-17	221	-10%	414	13%	0.53	1,029	24%	4.66	47	97.0%	315,800	1.2%	352,700	12.0%	365,206	9.0%	294.6
Sep-17	190	-9%	343	-4%	0.55	990	20%	5.21	51	96.4%	311,700	-0.6%	313,750	-0.4%	335,517	3.4%	290.8
Oct-17	149	-11%	321	37%	0.46	950	29%	6.38	49	96.1%	313,100	0.4%	310,000	4.3%	315,796	0.0%	292.1
Nov-17	135	-15%	221	-13%	0.61	851	20%	6.30	60	95.9%	304,100	-2.7%	305,000	3.4%	338,571	11.4%	283.7
Dec-17	99	9%	170	13%	0.58	733	26%	7.40	58	95.9%	304,800	-0.6%	286,000	-14.6%	307,846	-12.8%	284.3
2018	2,016	-8%	4,029	5%	0.50	863	12%	5.14	41	96.7%	311,800	0.6%	315,000	-1.5%	336,082	0.1%	290.9
Jan-18	104	-9%	287	13%	0.36	757	23%	7.28	66	95.5%	304,100	-0.1%	294,750	0.5%	312,858	2.5%	283.7
Feb-18	114	5%	276	5%	0.41	803	21%	7.04	46	95.9%	305,900	-1.3%	322,450	6.8%	341,168	7.0%	285.4
Mar-18	131	-24%	378	-5%	0.35	927	24%	7.08	52	96.3%	305,800	-2.7%	287,000	-9.3%	319,197	-5.1%	285.3
Apr-18	170	-9%	398	2%	0.43	1,037	26%	6.10	52	96.6%	305,900	-3.0%	301,200	-10.3%	326,351	-6.0%	285.4
May-18	226	-7%	517	10%	0.44	1,176	27%	5.20	48	96.8%	310,000	-1.6%	327,250	3.9%	340,560	-0.4%	289.2
Jun-18	211	0%	437	-9%	0.48	1,195	16%	5.66	53	96.4%	307,600	-1.9%	321,000	0.7%	341,486	0.7%	286.9
Jul-18	189	1%	375	23%	0.50	1,195	20%	6.32	52	96.1%	304,100	-4.8%	312,900	0.9%	322,788	-4.6%	283.7
Aug-18	204	-8%	385	-7%													

REGINA																	
	Sales	Y/Y%	New Listings	Y/Y%	S/NL Ratio	Inventory	Y/Y%	Months of Supply	DOM	SP/LP	Benchmark Price	Y/Y%	Median Price	Y/Y%	Average Price	Y/Y%	Index
Jan-19	113	9%	258	-10%	0.44	822	9%	7.27	66	95.2%	289,700	-4.7%	305,000	3.5%	308,170	-1.5%	270.2
Feb-19	135	18%	216	-22%	0.63	798	-1%	5.91	67	95.8%	290,000	-5.2%	310,000	-3.9%	317,759	-6.9%	270.5
Mar-19	166	27%	357	-6%	0.46	845	-9%	5.09	68	95.8%	289,100	-5.5%	290,536	1.2%	309,826	-2.9%	269.7
Apr-19	219	29%	410	3%	0.53	918	-11%	4.19	56	96.5%	292,500	-4.4%	300,000	-0.4%	322,318	-1.2%	272.9
May-19	216	-4%	459	-11%	0.47	1,032	-12%	4.78	46	96.6%	295,200	-4.8%	310,050	-5.3%	334,523	-1.8%	275.4
Jun-19	191	-9%	367	-16%	0.52	1,065	-11%	5.58	49	96.3%	297,400	-3.3%	314,000	-2.2%	325,562	-4.7%	277.4
Jul-19	181	-4%	357	-5%	0.51	1,089	-9%	6.02	49	95.4%	298,200	-1.9%	303,000	-3.2%	328,147	1.7%	278.2
Aug-19	181	-11%	310	-19%	0.58	1,077	-10%	5.95	53	96.0%	294,700	-1.6%	305,000	-3.3%	320,815	-3.4%	274.9
Sep-19	204	33%	292	-2%	0.70	992	-14%	4.86	55	96.1%	289,400	-3.5%	326,250	5.2%	333,497	5.4%	270.0
Oct-19	154	-11%	273	-16%	0.56	931	-14%	6.05	68	95.8%	293,100	-1.3%	296,950	-0.2%	319,884	4.0%	273.4
Nov-19	113	-28%	199	-6%	0.57	872	-11%	7.72	59	95.5%	290,800	-0.7%	316,900	1.4%	304,341	-7.7%	271.3
Dec-19	103	47%	116	-4%	0.89	719	-10%	6.98	65	94.7%	286,600	-2.2%	275,000	-10.9%	294,003	-6.1%	267.4
2020	1,976	4%	3,614	-10%	0.55	930	-9%	5.65	57	95.9%	292,225	-3.3%	305,000	-1.6%	320,652	-1.9%	272.6
Jan-20	74	-35%	234	-9%	0.32	781	-5%	10.55	71	95.9%	285,100	-1.6%	294,000	-3.6%	287,785	-6.6%	266.0
Feb-20	121	-10%	257	19%	0.47	815	2%	6.74	73	96.1%	289,600	-0.1%	319,500	3.1%	319,756	0.6%	270.1
Mar-20	160	-4%	301	-16%	0.53	843	0%	5.27	59	96.3%	294,400	1.8%	320,500	10.3%	329,341	6.3%	274.6
Apr-20	122	-44%	217	-47%	0.56	786	-14%	6.44	56	95.4%	299,700	2.5%	287,000	-4.3%	312,870	-2.9%	279.6
May-20	188	-13%	348	-24%	0.54	831	-19%	4.42	58	96.4%	300,900	1.9%	302,000	-2.6%	314,531	-6.0%	280.7
Jun-20	301	58%	437	19%	0.69	848	-20%	2.82	54	97.0%	307,100	3.3%	312,000	-0.6%	331,873	1.9%	286.5
Jul-20	283	56%	402	13%	0.70	868	-20%	3.07	41	97.1%	308,800	3.6%	330,000	8.9%	340,881	3.9%	288.1
Aug-20	275	52%	349	13%	0.79	847	-21%	3.08	45	96.7%	312,000	5.9%	318,000	4.3%	342,296	6.7%	291.0
Sep-20	264	29%	365	25%	0.72	840	-15%	3.18	50	97.1%	312,600	8.0%	314,500	-3.6%	340,413	2.1%	291.6
Oct-20	221	44%	283	4%	0.78	759	-18%	3.43	49	96.8%	310,800	6.0%	309,500	4.2%	325,406	1.7%	289.9
Nov-20	182	61%	230	16%	0.79	690	-21%	3.79	50	96.2%	309,300	6.4%	312,250	-1.5%	319,980	5.1%	288.5
Dec-20	147	43%	165	42%	0.89	558	-22%	3.80	49	96.6%	307,000	7.1%	287,000	4.4%	292,459	-0.5%	286.4
2021	2,338	18%	3,588	-1%	0.65	789	-15%	4.05	52	96.6%	303,108	3.7%	312,000	2.3%	328,557	1.8%	282.8
Jan-21	131	77%	225	-4%	0.58	564	-28%	4.31	48	96.6%	306,000	7.3%	288,000	-2.0%	298,460	3.7%	285.4
Feb-21	170	40%	269	5%	0.63	593	-27%	3.49	47	97.8%	314,300	8.5%	308,750	-3.4%	328,243	2.7%	293.2
Mar-21	272	70%	477	58%	0.57	692	-18%	2.54	35	98.3%	324,000	10.1%	331,250	3.4%	345,794	5.0%	302.2
Apr-21	297	143%	485	124%	0.61	794	1%	2.67	34	98.8%	333,200	11.2%	346,250	20.6%	375,493	20.0%	310.8
May-21	309	64%	454	30%	0.68	849	2%	2.75	35	98.6%	331,800	10.3%	335,000	10.9%	353,771	12.5%	309.5
Jun-21	322	7%	478	9%	0.67	892	5%	2.77	35	98.5%	335,300	9.2%	338,000	8.3%	355,518	7.1%	312.8
Jul-21	272	-4%	407	1%	0.67	918	6%	3.38	37	97.9%	335,400	8.6%	324,500	-1.7%	341,553	0.2%	312.9
Aug-21	233	-15%	369	6%	0.63	917	8%	3.94	40	97.9%	332,400	6.5%	353,000	11.0%	367,677	7.4%	310.1
Sep-21	217	-18%	352	-4%	0.62	899	7%	4.14	47	97.9%	332,700	6.4%	348,500	10.8%	357,424	5.0%	310.4
Oct-21	206	-7%	328	16%	0.63	875	15%	4.25	43	97.5%	326,500	5.1%	340,000	9.9%	353,366	8.6%	304.6
Nov-21	227	25%	228	-1%	1.00	739	7%	3.26	53	97.1%	327,500	5.9%	306,000	-2.0%	326,301	2.0%	305.5
Dec-21	154	5%	143	-13%	1.08	572	3%	3.71	55	97.2%	327,400	6.6%	315,000	9.8%	340,842	16.5%	305.4
2022	2,810	20%	4,215	17%	0.67	775	-2%	3.31	41	98.0%	327,208	8.0%	330,000	5.8%	348,667	6.8%	305.2
Jan-22	129	-2%	211	-6%	0.61	582	3%	4.51	60	96.4%	330,100	7.9%	306,150	6.3%	343,491	15.1%	307.9
Feb-22	191	12%	257	-4%	0.74	573	-3%	3.00	46	97.7%	329,800	4.9%	280,000	-9.3%	321,936	-1.9%	307.6
Mar-22	242	-11%	393	-18%	0.62	628	-9%	2.60	42	98.4%	341,600	5.4%	325,500	-1.7%	354,067	2.4%	317.7
Apr-22	271	-9%	444	-8%	0.61	711	-10%	2.62	34	99.2%	344,700	3.5%	345,000	-0.4%	359,140	-4.4%	321.5
May-22	321	4%	519	14%	0.62	814	-4%	2.52	32	99.2%	352,400	6.2%	350,000	4.5%	373,762	5.7%	328.7
Jun-22	302	-6%	476	0%	0.63	881	-1%	2.94	30	98.5%	350,100	4.4%	338,722	0.2%	353,736	-0.5%	326.6
Jul-22	261	-4%	395	-3%	0.66	912	-1%	3.49	37	97.9%	341,800	1.9%	347,600	7.1%	368,228	7.8%	318.8
Aug-22	224	-4%	336	-9%	0.67	891	-3%	3.98	40	97.2%	342,000	2.9%	331,500	-6.1%	345,578	-6.0%	319.0
Sep-22	209	-4%	328	-7%	0.64	854	-5%	4.09	49	96.8%	335,900	1.0%	312,500	-10.3%	332,007	-7.1%	313.3
Oct-22	198	-4%	261	-20%	0.76	792	-9%	4.00	49	96.9%	330,000	1.1%	310,000	-8.8%	322,480	-8.7%	307.8
Nov-22	141	-38%	241	6%	0.59	751	2%	5.33	46	97.5%	332,100	1.4%	300,300	-1.9%	318,186	-2.5%	309.8
Dec-22	109	-29%	110	-23%	0.99	573	0%	5.26	51	95.7%	330,000	0.8%	270,000	-14.3%	273,095	-19.9%	307.8
2023	2,598	-8%	3,971	-6%	0.65	747	-4%	3.45	41	97.9%	338,375	3.4%	325,000	-1.5%	345,268	-1.0%	315.6
Jan-23	92	-29%	222	5%	0.41	607	4%	6.60	59	95.6%	324,900	-1.6%	266,110	-13.1%	287,179	-16.4%	303.1
Feb-23	137	-28%	236	-8%	0.58	639	12%	4.66	60	95.9%	317,000	-3.9%	304,900	8.9%	321,885	0.0%	295.7
Mar-23	211	-13%	305	-22%	0.69	638	2%	3.02	57	96.9%	324,600	-5.0%	307,500	-5.5%	326,516	-7.8%	302.8
Apr-23	193	-29%	266	-40%	0.73	654	-8%	3.39	47	97.2%	329,600	-4.4%	329,000	-4.6%	335,711	-6.5%	307.5
May-23	277	-14%	408	-21%	0.68	706	-13%	2.55	43	98.3%	333,600	-5.3%	320,000	-8.6%	337,705	-9.6%	311.2
Jun-23	259	-14%	421	-12%	0.62	784	-11%	3.05	40	98.1%	335,700	-4.1%	353,500	4.4%	361,788	2.3%	313.2
Jul-23	245	-6%	358	-9%	0.68	816	-11%	3.33	45	97.1%	336,800	-1.5%	320,000	-7.9%	335,726	-8.8%	314.2
Aug-23	265	18%	337	0%	0.79	775	-13%	2.92	44	97.2%	329,900	-3.5%	312,000	-5.9%	333,122	-3.6%	307.7
Sep-23	218	4%	318	-3%	0.69	765	-10%	3.51	48	97.2%	325,800	-3.0%	312,000	-0.2%	330,405	-0.5%	303.9
Oct-23	218	10%	290	11%	0.75	739	-7%	3.39	45	97.2%	325,000	-1.5%	297,700	-4.0%	311,283	-3.5%	303.2
Nov-23	176	25%	193	-20%	0.91	674	-10%	3.83	47	96.7%	320,700	-3.4%	303,250	1.0%	311,000	-2.3%	299.2
Dec-23	132	21%	125	14%	1.06	507	-12%	3.84	64	95.9%	316,000	-4.2%	278,500	3.1%	300,894	10.2%	294.8
2023	2,423	-7%	3,479	-12%	0.70	692	-7%	3.43	48	97.2%	326,633	-3.5%	314,000	-3.4%	328,653	-4.8%	304.7
Jan-24	126	37%	202	-9%	0.62	508	-16%	4.03	72	95.7%	318,400	-2.0%	280,000	5.2%	298,224	3.8%	297.0
Feb-24	191	39%	224	-5%	0.85	469	-27%	2.46	53	97.1%	334,100	5.4%	325,000	6.6%	349,818	8.7%	311.7
Mar-24	212	0%	277	-9%	0.77	469	-26%	2.21	49	97.8%	332,400	2.4%	310,000	0.8%	333,718	2.2%	310.1
Apr-24	277	44%	366	38%	0.76	499	-24%	1.80	39	98.6%	338,200	2.6%	345,000	4.9%	369,743	10.1%	315.5
May-24	301	9%	413	1%	0.73	549	-22%	1.82	31	99.2%	338,600	1.5%	358,000	11.9%	367,842	8.9%	315.9
Jun-24	280	8%	392	-7%	0.71	570	-27%	2.04	31	99.0%	335,900	0.1%	330,000	-6.6%	345,810	-4.4%	313.3
Jul-24	267	9%	390	9%	0.68	611	-25%	2.29	33	98.7%	336,100	-0.2%	342,000	6.9%	357,320	6.4%	313.5
Aug-24	277	5%	354	5%	0.78												